

EAST LEAKE NEIGHBOURHOOD PLAN STATEMENT OF CONSULTATION

Final version, 13 January 2015

(With errors corrected post examination as noted in examiner's report)

Contents

1. Introduction
2. Relevant consultation activities prior to 2011
3. East Leake Community Plan Group
4. Consultation on Draft Vision for Neighbourhood Plan
5. Other stakeholder meetings and consultations
 - 5.1 Meeting with Nottinghamshire Wildlife Trust
 - 5.2 Interviews with Village Estate Agents
 - 5.3 Meeting with Stanford Hall Developers
 - 5.4 Gypsum related correspondence
 - 5.5 Drainage/Sewerage related
 - 5.6 Playground Consultation
 - 5.7 Transport related correspondence
 - 5.8 Survey of Local Business Needs and related items
 - 5.9 Meeting with East Midlands Airport
 - 5.10 Meeting about East Leake Schools
 - 5.11 Health related
6. Consultation on Draft Neighbourhood Plan
 - 6.1 Initial drafts of sections on Employment, Transport, and the Village Centre
 - 6.2 Approval by East Leake Parish Council
 - 6.3 Pre consultation Check by Key Stakeholders
 - 6.4 Pre Submission Public Consultation, 15 Sept to 31 Oct 2014
 - 6.5 Summary of Consultation Responses and Amendments made
 - 6.6 Summary of Response Slips Received from Individuals on the Pre Submission Consultation Version

Appendix 1 – Abbreviations

Appendix 2 – Timeline

Appendix 3 – Summary Analysis of 2009 Questionnaire Survey re Parish Plan Update

Appendix 4 – East Leake Parish Council Newsletter articles, August 2011 onwards

Appendix 5 – Written responses to the draft vision consultation

Residents

Natural England

English Heritage

Co-operative Estates

Rt Hon Kenneth Clarke QC MP

Appendix 6 – Attendance lists for CABE facilitated Workshops

Appendix 7 – Playground Consultation – presentation of results (separate document)

Appendix 8 – Pre submission consultation responses (separate document)

1. Introduction

- 1.1. The East Leake Neighbourhood Plan process started in 2011, and this document charts the stages in the process, detailing the consultation and communication activities that took place.
- 1.2. A variety of communication channels were used to keep members of the public informed about the progress of the project, and to continually offer opportunities for people to get involved.
- 1.3. East Leake Parish Council publishes a quarterly newsletter which is delivered to all homes in the village. This is the primary formal communication channel between East Leake Parish Council and residents. It was used to provide regular short updates on the progress of both the Community Plan and the Neighbourhood Plan, also covering Rushcliffe Borough Council's Core Strategy at times. The relevant articles are included in Appendix 4 below.
- 1.4. The East Leake Times is a small local newsletter published approximately monthly including articles of local interest and adverts by local traders. Regular reports were published via this route, usually using the same text as for the Parish Council newsletter.
- 1.5. The main local newspapers are the Loughborough Echo and the Nottingham Evening Post. The Loughborough Echo includes a section entitled "Village Round Up" and regular progress reports were published in the East Leake column, again often based on the Parish Council Newsletter reports.
- 1.6. The East Leake Neighbourhood Plan Web page was set up early in the project on the Parish Council Website, and minutes of meetings and other papers published as they became available. See <http://www.east-leake.gov.uk/east-leake-neighbourhood-plan>
- 1.7. Four workshops facilitated by CABA (Commission for Architecture and the Built Environment, now part of the Design Council) were held during 2012 to help progress the Neighbourhood Plan. These were attended by members of both groups, along with representatives of employers in the village. These were designed to raise skill levels and start moving things forward, rather than as consultation exercises, however it was felt important to involve as many different groups as possible to give the widest shared ownership. A further Building for Life workshop was held in May 2014, to offer others the opportunity to learn about this and to update to the new version of the standard. Workshop attendance is included at Appendix 6.
- 1.8. Local businesses were seen as an important group to involve. East Leake Neighbourhood Plan Project Team members regularly attended a monthly "business breakfast" forum held in one of the village cafes, to network, seek views, and impart information. A survey of business needs was undertaken – see Section 5.8 below.
- 1.9. Neighbouring Parish Councils were consulted when setting up the Neighbourhood Area to ensure that they were content with it relating to the area of the East Leake parish, and to consider the needs of "Village Users". These meetings are documented in the East Leake Neighbourhood Plan Project Team minutes, and also in the minutes of the relevant Parish Councils.

- 1.10. It should be noted that the Neighbourhood Plan project was not progressing in isolation. The Community-led plan exercise was happening simultaneously, with the two groups working very closely together. The major survey undertaken by the East Leake Community Plan Group in summer/autumn 2012 carried several questions drafted by members of both groups, designed to elicit the views of village people on various aspects of planning, particularly housing, to inform the Neighbourhood Plan. Details of the Community-led plan consultations are included at section 3 below.
- 1.11. Rushcliffe Borough Council was during the same period finalising and submitting for examination its Core Strategy, and immediately prior to the kick-off meeting for the Community Plan, it had undertaken a series of workshops and consultation events about housing sites.
- 1.12. The statutory pre submission public consultation on the Neighbourhood Plan, as required in Section 21 of the Neighbourhood Planning (General) Regulations 2012, ran from 15 Sept to 31 October 2014. Leaflets and response slips were circulated to residents. Statutory consultees, landowners, businesses, and other stakeholders were invited to comment via email or letter. This process is documented in sections 6.4, 6.5, 6.6 and Appendix 8 below.
- 1.13. During 2012 to 2015 several large scale planning applications were submitted for housing developments in East Leake, and for the establishment of a Defence and National Rehabilitation Centre at Stanford Hall on the outskirts of the Parish area. The various developers were also consulting with residents. When planning applications for large scale housing developments were considered by the Parish Council, these were well attended by members of the public who were given the opportunity to speak.
- 1.14. The Timeline is included in Appendix 2 to show the sequence of events for all these strands, colour coded for ease of reference.

2. Relevant consultation activities prior to 2011

- 2.1. The previous East Leake Parish Plan was published by the Parish Council in 2004, and since 2009 the Parish Council had been seeking to revise it.
- 2.2. A questionnaire was delivered to homes in 2009, with 219 responses (about 9% of households). The data was input with the assistance of Rural Community Action Nottinghamshire (RCAN), however was not reviewed by the Parish Council at that time.
- 2.3. The data was examined in 2011 at the start of the Community plan/Neighbourhood Plan exercise, and the results are summarised in Appendix 3.

3. East Leake Community Plan Group

- 3.1. The Community Plan process was initiated in the Spring of 2011. After formation of a new Parish Council Cllr Thomas was given portfolio responsibility for this area. The Parish Council was aware that the 2004 Parish Plan needed to be revised. Advice was sought from RCAN, who explained the current thinking on “Community Led Plans”, as opposed to Parish Plans led by the Parish Councils.
- 3.2. During August 2011 plans were laid by the Parish Council for launching the community led plan process. A launch meeting was arranged for September and this was heavily publicised by means of a stall at the Village Show, letters to stakeholders, posters, article in Loughborough Echo, item on village website, invitations to local groups etc.
- 3.3. On 17th and 18th September 2011 councillors stood outside the Co-operative store handing out flyers and taking contact details of around 25 people who were interested in attending the meeting or otherwise being part of the process.
- 3.4. On 21 September 2011 the launch meeting was held in the Village Hall. The report of the meeting, as presented to the Parish Council later, is included below.



East Leake Plan

A kick-off meeting for the East Leake Plan, held at the Village Hall on Wednesday 21

September, was well attended by 32 residents and representatives of various village groups and businesses.

Parish Councillor Kevin Shaw chaired the meeting, and gave the history of the current East Leake Parish Plan, published by the Parish Council in 2004, when he was Clerk to the Parish Council, and delivered to every household. Copies of this document are available from the Parish Council Office and online. The concept of a Parish Plan has developed since it was introduced in the government white paper “Our Countryside – Our Future” in November 2000, and there is now much more emphasis on the plan being “community-led”, rather than driven by the Parish Council. The purpose of the meeting was to form a Steering Group of community members to update, or completely replace, the current plan.

Karen Tarburton from Rural Community Action Nottinghamshire explained that a modern community-led plan is a 10 year vision of how the community wishes to develop, based on research and extensive consultation to determine the views of local residents, businesses and other organisations. The process of producing and implementing a plan provides a focus for action at a local level, and informs and influences policy making and planning decisions at the borough and county level.

Tony Jarrow from Cropwell Bishop Parish Plan Group described the process that they had gone through in creating their village plan, and the benefits it had brought to the village. Having a clear and validated statement of community views, with majority support, is essential in taking forward any village improvements. He advised that the whole process from consultation to publication, would take about 18 months to 2 years, and that the group would need to secure or raise funding of £3000 to £6000.

A lively question and answer session followed. Involvement of the children and young people of East Leake was felt to be important. Although the village already has facilities such as a village hall, and a variety of social and sporting groups, concern was expressed that it was difficult to engage people, and it was suggested that the views of newer residents should be sought.

A question raised the issue of “Neighbourhood Development Plans” and how they relate to this exercise. These are proposed in the Localism Bill currently going through Parliament, and, if the bill is adopted, such plans will form the basis for decentralisation of planning control.

Councillor Shaw drew the proceedings to a close by asking for a show of hands to determine whether or not an East Leake Plan Steering Group should be set up and there was overwhelming support for this. Eighteen individuals volunteered to be on the group, and the first meeting will take place shortly. Other residents interested in joining the Steering Group can get in touch via the Parish Council Office. Young people, new residents in the village not already involved with any groups, and members of ethnic minorities would be particularly welcome, as these are underrepresented to date.

- 3.5. The first meeting of the Steering Group took place on 13 October 2011, and Jenny de Villiers was appointed Chair, Vicenta Rose Secretary. The name of the group was agreed to be “East Leake Community Plan Group”. The minutes, along with those from later meetings, held at approximately monthly intervals, are at: <http://www.east-leake.co.uk/download-documents.html>.
- 3.6. The Community Plan group set up its own Web site to provide news updates as the plan progressed and to make minutes of meetings publically available. See: <http://www.east-leake.co.uk/community-led-plan.html>
- 3.7. The Community Plan group set up its own Facebook page in Jan 2012, to provide regular community bulletins, with some 40 members (at Dec 2013). See <https://www.facebook.com/groups/ELCPG/>

- 3.8. On Friday 9 and Saturday 10 March 2012 the Community Plan Group held its first set of “drop-in days” attended by over 350 people. The purpose was to give residents an opportunity to identify issues of concern and make other comments on village life. The drop-in days were well publicised by means of banners, newsletter articles, newspaper articles, posters, flyers through doors etc.



The format was a series of “market stalls” on the various topic areas, with attendees being invited to write their views on sticky notes.

There was also a “green spot/red spot” exercise where people were asked to place a red spot on the area of the village they liked least and a green spot on the area they liked most.

A class of children from Brookside school attended. Activities for children were provided, including colouring and face painting.



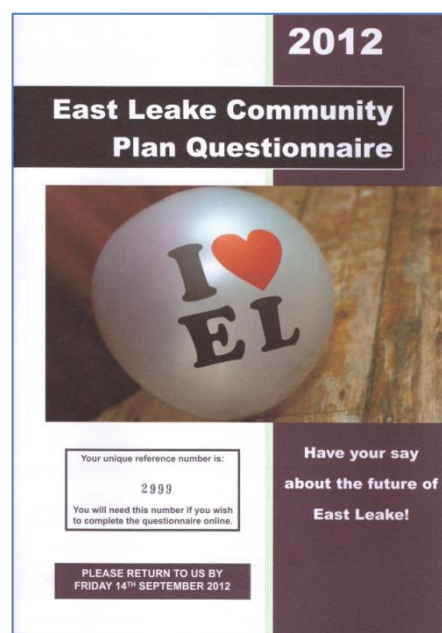
Balloons and armbands were given out. A prize draw was held for a hamper donated by the local Co-operative store.



3.9. The sticky notes from each topic stall were collated and analysed to identify key themes, to be probed further by means of an extensive survey. Small subgroups for each of the topics devised questions for the questionnaire, based on the key themes, and these were reviewed by Jenny Kirkwood of Rural Community Action Nottingham. The questionnaire was then professionally designed and printed, and an online version produced, so that residents could either return the paper questionnaire or fill it in on line. One section of the questionnaire, printed in different colours, was aimed at young people.

3.10. East Leake Community Plan Group gave an update on their work to date at the Annual Parish Meeting and Community Forum meeting on the 23rd May 2012, attended by some 42 people.

3.11. Flyers about the forthcoming questionnaire were distributed at the village carnival in June. Two large banners were erected to alert residents about the questionnaire. The questionnaire forms were printed and issued to every household at the end of August 2012, a total distribution of 2776 forms. The questionnaire included a prize draw, to increase the response rate. Forms were individually numbered to ensure that pressure groups did not skew the results with multiple responses, and to allow monitoring of the response rate in different neighbourhoods. Collection boxes for completed forms were placed at various locations around the village. Care homes were visited to facilitate collection of group responses for their residents.



3.12. By 19 September 2012 the survey had achieved a 32% response rate and it was agreed to extend the deadline to the end of September, with another round of publicity. Members of the group visited school assemblies to engage children in encouraging their families to return their forms. Schools were asked to text parents with a further reminder. Areas of the village with a low response rate were targeted for reminder leaflets, again delivered to households.

3.13. By the final closing date there were delivered 2776 surveys of which 1058 were returned (149 online and 909 paper returns) giving a response rate of 38%. A company was engaged to analyse the results and produce a report of the findings.

3.14. At their December 2012 meeting, the East Leake Community Plan Group welcomed the data analyst who gave a summary presentation of the findings.

- 3.15. The final report was received mid January 2013, and a launch event planned for 23 March 2013, to present the results of the questionnaire and engage the community with the action plan to make it happen. The drop-in event



was again publicised widely by means of banners, posters, newsletter and newspaper articles, and via the schools. The event was laid out with themed tables covering each area of the questionnaire. Each table had a large speech bubble poster: "You said... What shall we do about it?" Some 70 people attended the launch, despite extreme snowy weather conditions on the day.

- 3.16. A follow-up consultation using the same posters was held at the Annual Parish Meeting and Community Forum on 22 May 2013.

- 3.17. The data gathered from these two consultation events was used by the Community Plan Group to construct an action plan, prepared alongside a brochure presenting the Community Plan.



- 3.18. During the Community Plan consultation process several meetings took place to ensure that the Community and Neighbourhood plans were aligned, and several people were members of both groups. This ensured that findings of the Community Plan consultation that were relevant to land use were incorporated into the Neighbourhood Plan, fully reflecting the views expressed by residents on these issues.

- 3.19. Throughout the process the group issued occasional interim updates via the Parish Council Newsletter (see Appendix 4), East Leake Times, and the Loughborough Echo. These described the work in progress at the time, to keep people informed and maintain interest.

- 3.20. Between 28 January and 28 February 2014 the draft brochure and action plan were sent to stakeholders for comment. The Chair and Secretary attended a meeting of the Parish Council on 28 January to brief them on progress. The Parish Council responded to the consultation, and their comments were acted on as appropriate. There were no other responses to the stakeholder consultation.

- 3.21. On Saturday 26 April 2014 the Community Plan Group held a third drop-in day to launch the Community Plan. The launch was publicised via flyers delivered to every home and banners in the village and via "Rushcliffe Reports", the Borough Council's newsletter delivered to all homes.



East Leake's got a plan

East Leake's community plan is uniting residents in thinking about and planning what they want for the village in the future.

Villagers have completed a questionnaire and attended drop-in sessions to find out more. The action plan will be launched on Saturday 26 April 2014 at 10.30am at the Village Hall. Residents can find out more about how to get involved locally. Topics include new housing developments with funds for new amenities, making the village centre more attractive and encouraging people to shop locally. Other topics will include sporting opportunities, health and social care, as well as other things which affect everyday life such as litter, dog fouling, street lighting and speeding.



COMMUNITY

The event was well attended with some 150 residents listening to presentations and wandering around the stands presenting the various sections of the plan and asking for volunteers to take things forward.

- 3.22 During May 2014 the Community Plan Group reformed as an Action group with additional members from the launch day, and published the final copy of the Community Plan. Printed copies of the Community Plan Brochure and Action Plan were delivered to every household in the Village. The Action Group continues to meet to take forward the plan.



4. Consultation on Draft Vision for Neighbourhood Plan

- 4.1. In March 2013 East Leake Neighbourhood Plan Project Team printed the “Draft Vision” for East Leake as an A5 sized colour leaflet. These were delivered to every household in the village along with the March 2013 Parish Council Newsletter, which contained an article giving further information (see Appendix 4).

The draft vision can be found at: http://www.east-leake.gov.uk/docs/East_Leake_Vision.pdf



INTRODUCTION

East Leake is a rural village in south Nottinghamshire, set in a green hollow surrounded by hills. The built area is divided through the centre by a green wedge, the result of the Kingston Brook and its associated floodplain. Over the last half century, it has grown rapidly from being a linear village at the junction of roads that emanate north, south, south-west, east and west, to being a much larger settlement of nearly 1000 people. It is very well connected to the rest of the East Midlands region and beyond, being close to Loughborough, Nottingham, Derby and Leicester, and having motorway, rail and airport links within a few miles of the village.



East Leake is largely self-contained and acts as a hub for surrounding smaller villages. It has a historic centre at one end of Main Street and a contrasting, more modern shopping centre at the other. There are a wide range of services and a good selection of shops in the village, plus considerable employment, especially at British Gypsum.

WHY DO WE NEED A VISION?

This vision is our aspiration for shaping East Leake over the next 15 to 20 years, by setting goals that are both realistic and achievable. We believe we need a vision to ensure that East Leake develops in the way the community wants, for the benefit of all.

- 4.2. Multiple copies were sent to the largest employers in the village with a covering note asking them to distribute them to staff:

- British Gypsum
- Weatherford
- Manor Farm Animal Centre and Day Nursery
- East Leake Academy
- Brookside School
- Lantern Lane School

Smaller employers were given copies via the Business Forum and directly.

- 4.3. Piles were left at the following locations, to target people living outside East Leake who use its facilities:

- Health Centre and doctor's surgery
- Two dentist surgeries
- Two Estate Agents
- Post Office
- Co-operative Supermarket
- Optician
- Physiotherapist
- Vets Surgery
- Four hairdressers
- Leisure Centre
- Newsagents
- Two cafes
- Library

OUR VISION

A viable community.

We wish to maintain the character of East Leake as a place with a strong sense of community and history, supporting a wide range of facilities and services. We aim to enhance local employment opportunities, in particular improving facilities for start-up businesses.



Maintaining the green environment.

We wish to conserve and enhance the rural character of the village, and to preserve the ring of green undeveloped hills surrounding the village. Further, we intend to exploit and enhance the network of informal green spaces within the village, so that they support attractive pedestrian and cycle routes connecting the different parts of the village.



An attractive village centre.

We are concerned that at present the shopping centre is something of a muddle; we will endeavour to improve the quality of the entire public area in the village centre by making it more pedestrian-friendly and safer, resolving parking problems, reducing traffic dominance and radically improving the quality of building design and materials. We will also encourage retention and widening of the range of shops and facilities that serve the needs of the community.



Easier to get around.

We will seek to improve connections between the different parts of the village, and out into the countryside beyond, for both pedestrians and cyclists; in particular we want all new developments to enhance the network of routes within the village. We will press for improvements to public and community transport links with facilities and transport interchanges outside the village.



Better facilities and services.

We believe that the capacity of essential services such as health, education and drainage should be increased in step with any new developments within East Leake and surrounding smaller villages, and will press hard for this. Further, we wish to improve facilities for young people, and in particular provide more activities for teenagers.



- 4.4. The following churches/faith groups were contacted and invited to distributed the leaflet to members:

West Leake, Stanford, Rempstone, Costock, East Leake Anglican, East Leake Catholic Church, East Leake Methodists, East Leake Baptist Church

- 4.5. A press release was sent to Radio Nottingham, East Midlands Today, Radio Leicester, Central News, East Leake Times, the Village Website, Parish Council Website, Loughborough Echo, Nottingham Evening Post. The Loughborough Echo ran an article about it on 26 March 2013

and the East Leake Times issue of April 2013 also included it. East Leake Adacemy covered the vision in their April 2013 newsletter to parents.

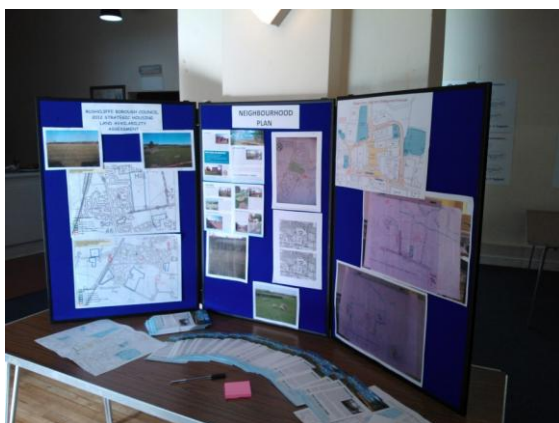
4.6. The leaflet encouraged readers to give their views. A total of 6 responses were received. These are included (anonymised) in Appendix 5.

4.7. The following bodies were emailed to inform them of the publication of the draft vision and inviting observations: English Heritage; Environment Agency; Forestry Commission England; Natural England. Replies received are included in Appendix 5.

4.8. A copy of the draft vision was sent to the local MP, Ken Clarke and his reply is included in Appendix 5.

4.9. A meeting was held on 17 May 2013 with James Lough on behalf of the developers of Stanford Hall, and the notes are included in Appendix 5.

4.10. The Neighbourhood Plan Project set up a stand at the Annual Parish Meeting on 22 May



2013, with copies of the draft vision and other information relevant to the project and project team members were on hand to answer questions and solicit the views of residents. There was considerable interest in early ideas to improve the village centre, and in the maps of the Borough Council's SHLAA relevant to the village.

Housing for all.

We are concerned that recent new housing developments have been mainly targeted at well-off families; our aim is to maintain the diversity of the village population by ensuring that new housing is provided for young people, lower income families and older people. We will restrict new housing to sites within walking distance of the village centre, and will ensure that its character is sympathetic to the local tradition in terms of materials and scale. We will encourage smaller scale housing developments on infill sites in preference to large-scale estates on green field sites. We will encourage and support improvements in the quality and energy efficiency of older housing.



YOUR VIEWS ARE IMPORTANT

- Do you have any observations on this draft vision?
- Do you agree with it? What have we missed?
- Which of the six vision statements should be the priority for action?
- Do you have the time, skills and knowledge to assist us to take the plan forward?

You can contact the Neighbourhood Plan Project Team via the Parish Office.



Published by the East Leake Neighbourhood Plan Project Team, a working group of East Leake Parish Council.



The Parish Office, 45 Main Street, East Leake, Loughborough, Leics LE12 6PF.
E-mail: parishclerk@east-leake.gov.uk
www.east-leake.gov.uk/east-leake-neighbourhood-plan

Designed and printed by Robert Price, Radcliffe, Leics. Tel: 01509 480111. www.adaprint.com

5. Other stakeholder meetings and consultations

5.1. Nottinghamshire Wildlife Trust

East Leake Neighbourhood Plan Project

Meeting with Gaynor Jenkins, Conservation Officer, Nottinghamshire Wildlife Trust

15th March 2013, 1.30pm at Parish Office

1. CO outlined the background to Neighbourhood Plans and the current state of the work in East Leake.
2. Discussion ensued about the importance of wildlife corridors.
 - a. Two are very obvious: The first (the railway line, designated a Site of Importance for Nature Conservation – SINIC) runs roughly SW to NE through the parish. The second corridor is Kingston Brook which runs E to W.
 - b. There are 2 others which are worth noting. One is Fairham Brook, which rises in Keyworth and runs west via Bunny before turning N towards Clifton. Whilst not actually in the parish, it comes very close to the northern boundary. The other is a partial E to W corridor starting at Bunny Woods, passing through woods on Ash Lane, linking to Hotchley Hill and Rushcliffe Golf Course (the latter two in the parish).

Any opportunities to strengthen these corridors should be strongly encouraged.

3. It was commented that there is a low proportion of woodland within the parish. Hedgerows and small plantations are very important for wildlife, and should be encouraged / preserved. Based on the maps, hedgerows are more common in the east and south of the parish, but spares to the west / south west where arable farming predominates and fields have been enlarged by grubbing up hedgerows.
4. Ridge and Furrow sites are evidence of unimproved / semi-improved ancient grassland which is increasingly rare.
5. It was suggested that Rushcliffe Borough Council (Paul Phillips) should be approached to get Meadow Park designated as a Local Nature Reserve. Designation increases protection for the site, as well as opening up additional funding opportunities for its management.
6. Wildflower Meadows are significantly absent from most of the South Nottinghamshire Wolds. Any embryonic sites identified in the parish should be preserved if at all possible.
7. Stanford Hall park, just over the southern boundary of the parish, is a large Biological Site of Importance, especially for bats.
8. Nottinghamshire Wildlife Trust is involved in planning the restoration of the gravel extraction site near Lings Farm. Part of this is being restored to farmland: the remainder will become a Nature Reserve once extraction has finished. This would be linked to the old St Peter's Churchyard (just east of the parish)
9. GJ suggested that valuable information about specific sites could be derived from <http://info.nottinghamcity.gov.uk/insightmapping>. This GIS (Geographic Information System) includes details of Biological sites of importance, SINICs, Ancient woodland etc.

It was agreed that communication would be maintained, and further discussions may be appropriate in due course.

CCO

15/3/13

5.2. Estate Agents

East Leake Neighbourhood Plan Group

Interview with William Pole B.Sc. (Hons) FNAEA and member of the RICS, of Hartleys Estate Agents, 11 Feb 2013

The discussion was to bring out any observations on the state of the housing market in East Leake, to help inform policies in the Neighbourhood Plan.

East Leake is a popular village with good facilities and a community feel. Homes sell well if correctly priced. House prices are high relative to other areas and the village tends to be on the expensive side for first time buyers.

The biggest gap in the market is to provide a stepping stone for families between three bedroom semi detached homes (at about £145,000) and 4 bedroom detached homes (from £200,000 for the older properties, £230,000 for the Gotham Road estate) and the Mr Pole suggested that 4 bed semi detached houses with decent sized bedrooms could fill this gap, whilst providing the required density and profit margin for developers. With modern soundproofing disturbance from attached neighbours is less of an issue. An “exclusive” development of semi detached homes in Gotham has sold well.

Three bedroom semis in East Leake sell quickly if correctly priced, and achieve a higher price than in Loughborough. New build three bedroom semi detached houses tend to be targeted at young professional couples and have one large master bedroom and two very small rooms, so families with growing children very quickly need somewhere to move on.

The Rushcliffe estate has a good supply of market family homes at the cheaper end of the range, as very few are now let. Grants are needed to deal with the insulation and re-roofing, and this could be an avenue for the Neighbourhood Plan to pursue. Without roof replacement, in particular, it can be difficult to get a mortgage on these properties.

Bungalows are not seen as profitable by developers, due to more land being required to provide a given amount of accommodation. The supply of bungalows in East Leake seems to be about right for the demand at present. Over recent years the proportion being bought by young couples as opposed to older people has increased – now about 50%. The potential for conversion/extension is good. For older people bungalows need to be close to the village centre and not on a hill.

The retirement flats in Thurman Lodge have proved popular. Flats in Walnut Gardens and Osier Fields came onto the market just before prices came down and some sellers have had equity issues when trying to sell. Those with two large bedrooms do better than one large and one small. Many are let by private landlords.

We discussed tenure types. Shared ownership can work well. 100% rental housing association homes are needed for local people with family and/or work ties in the village. Mix of social and market housing can be problematic, and support/recourse is needed in cases where there are difficult neighbours.

East Leake Neighbourhood Plan Group

Interview with Melissa Hopson BSc (Hons) MRICS, of John German Estate Agents, 19 Feb 2013

The discussion was to bring out any observations on the state of the housing market in East Leake, to help inform policies in the Neighbourhood Plan.

The biggest demand in the village is for family housing – 3 and 4 bedroom detached houses. Families are attracted by the good range of local facilities and amenities, including schools, Leisure Centre, Heath Centre, shops, dentist, not found in other villages such as Rempstone, Gotham, Wysall. 3 bedroom semi detached houses generally sell the most easily. The greatest lack in the housing stock is for homes for the first time buyer, i.e. for singles or couples at less than about £120,000.

Many buyers (and renters in particular) are moving within the local areas or have links here. The central location can be useful e.g. for couples where one person works in Nottingham, one towards Leicester. Rental properties find tenants quickly, with smaller homes being most in demand.

All types of homes in the village sell well, and all areas of the village, particularly nearer the centre, e.g. Potters Lane, Manor Farm Meadow, and the Brookfields/Northfields area. The Trees estate is more affordable and there are also buyers for the relatively inexpensive houses in the Rushcliffe Estate.

Any new developments should have a diverse mix of housing, and include provision for the lower end, e.g. 2 bedroom semi detached or town houses, although apartments do also sell. Amenities and infrastructure in the village must be developed to keep pace with new houses. There are various strategies for successfully mixing market and affordable housing, and this is an issue for specialist planners to give their attention to.

There is considerable demand for bungalows in the village, from residents wishing to downsize and waiting for the right bungalow to come onto the market. For older people, homes need to be close to the village centre, and a flat walk, for daily shopping etc. Any developments for older people further from the centre might benefit from their own shop, though the shoppers bus is a useful option. Thurman Lodge has proved popular and the apartments sell quickly if correctly priced. East Leake may not have the population to warrant a large retirement development, but there is probably demand for some sheltered bungalows with private outdoor spaces.

The shopping centre has a good, and improving, range of independent shops, cafes etc. Any future plans for the centre should encourage a diversity of more up-market shops.

5.3. Stanford Hall

East Leake Neighbourhood Plan Project Team

Meeting with Stanford Hall Developers

Friday 17 May 2013

The meeting was with James Lough (JL), of the planning agents for the Stanford Hall Development. East Leake Neighbourhood Plan Project Team members present were Lesley Bankcroft, Julie Love, John Thurman, Carys Thomas, and Pete Warren.

CT outlined the Neighbourhood Plan project and gave JL copies of the Draft Vision statement.

JL described the background for the development and progress to date. The planners are currently working with statutory consultees on issues such as heritage, highways and ecology , and the scheme should come before Rushcliffe Borough Council Development Control Committee shortly.

The Defence (D) and National (N) parts of the project are progressing on different tracks, with D work expected to start in 2014 and opening around 2017. Timescales for N are less clear, but likely to be towards the end of the 5 year period covered by the (outline) planning application. The application for D is full planning permission plus listed building consent.

JL stressed that the D site would be a military base, with fences (sensitively screened as possible), security cameras, armed guards etc to protect against terrorist threats etc and there would be little or no public access. Access to the D would be via the North Lodge on the A6006 and the N would have a new access on Stanford Road. The South Lodge entrance would not be used for vehicles, but available for pedestrian/cyclist and emergency access.

The D would have residential patients needing a high degree of care, with short term visits by patients returning for short term follow up treatments. It is not a hospital as such, as patients will be treated and stabilised before transferring here, and the transport movements are not anticipated to be similar to those of a hospital. Resident patients will go home over the weekend wherever possible. D projects 364 staff, with 90 living on site, and 526 car park spaces. Staffing and movement projections for N are less clear at this stage – estimates of 66 day workers, 30 shift workers, 150 car park spaces. (This information is in the transport assessment documentation.)

The meeting explored the likely use of East Leake village facilities by patients/staff of the D. There will be canteen facilities on site, so there is not likely to be a huge demand for lunches from the staff. There will be no bank, post office etc on the base. The resident staff will have their own medical facilities, so there will be no call on East Leake Health Centre. Patients will be busy all day with treatments etc, and not expected to be moving off base in large numbers.

JL did not believe that there would be provision for staff family accommodation on the site, as there were no play facilities etc included. Families would be therefore housed in local communities, including East Leake, and school places would be needed only in line with the normal housing

demands. Patients' families would be short term visitors only, not resident for periods long enough for children to require schooling.

There was considerable discussion about access, with East Leake Neighbourhood Plan Project Team members expressing concerns about:

- safety for the North Lodge entrance on a fast, busy road
- difficulty of crossing the road from the bus stop
- exacerbation of delays already experienced at the staggered cross roads

JL indicated that NCC Highways have accepted the proposals subject to modifications to the North Lodge entrance, provision for horses to cross, and funding for a bus stop and pavement.

East Leake Neighbourhood Plan Project Team members agreed that the Parish Council should be encouraged have its own discussions with NCC (Paul Ghattoria) and this would be raised via the PC Planning Committee.

The Theatre is to be preserved/restored, and used by the D, and there is a commitment to explore the viability of some public access. However this is unlikely to be extensive due to security, nor for theatrical productions, as the backstage facilities are not being renovated.

The existing swimming pool is not being preserved, but the group welcomes plans to preserve the diving boards as a sculpture.

There was an extensive discussion about sewerage provision. The plan is for the development to connect to the sewer on Rempstone road, which connects to the treatment centre on West Leake Road via pumping stations at Rempstone, Costock, and East Leake village centre. Developers have responsibility only for the connection to the main sewer. The environment agency and Severn Trent are in discussions about the requirements "downstream" to increase capacity of pipes and pumping stations. The developers are undertaking not to occupy the site until these issues are resolved, thereby preventing delays to the approval process and start of the building work. JL noted that there will be provision for onsite storage before discharge into the sewer to provide some mitigation for problems at peak times.

5.4. Gypsum Related Consultation

On 25th November 2013 Conrad Oatey and Carys Thomas of the Neighbourhood Plan Project Team met with:

- Jeremy Elvins BSc (Hons), Eur. Geol, C Geol, FGS,MIQ – Company Geologist at British Gypsum/ (Saint Gobain)
- Allen Gorringer, Head of Environment at Saint Gobain.

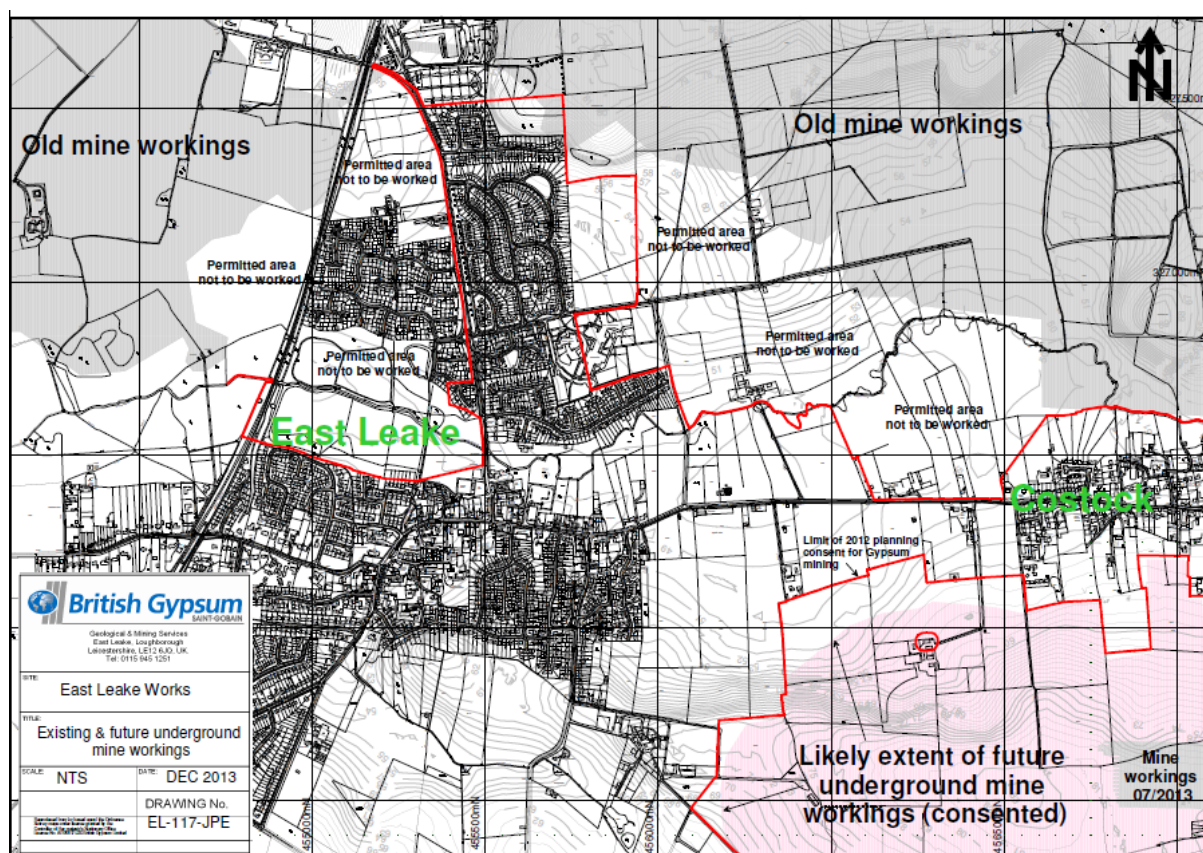
Copies of the Neighbourhood Plan Vision document were supplied for distribution to employees at the East Leake site for comment.

An offer was made for the use of meetings rooms etc for further consultations with employees.

The British Gypsum Travel plan was provided to the Neighbourhood Plan Project.

A map were provided for the Neighbourhood Plan Project to use, detailing old mine workings, areas where planning permission had been granted for mining, and the likely extent of future underground mine workings (consented) – see below.

JE confirmed that British Gypsum do not mine underneath people's houses. They are required to leave a half depth property protection pillar – for example if the mine is 100m deep, they leave a 50m standoff to the property. The difficulty home owners have with underground mine workings is that when they do a search and they were to identify that there were mine workings beneath their property they could struggle to get a mortgage due to the risk of mining related subsidence.



In early December 2013 an email conversation took place between Carys Thomas of the Neighbourhood Plan Group and Steven Osborne-James of the Nottinghamshire County Council Planning Policy Team. He confirmed that mining does not take place below existing built up areas and supplied the following information.

“The current Minerals Local Plan contains a Chapter on gypsum and policy M10.1 is relevant to what you are working on. However we are currently in the process of writing our new minerals local plan and we are out for consultation on our preferred approach. The draft policy contained in the preferred approach (MP7 gypsum provision) is different to the policy in the existing plan. This is because all the remaining reserves of gypsum that serve the Marblaegis mine now have planning permission to be worked. These reserves are expected to last until 2026 and once used up mining will move into Leicestershire.

The existing minerals plan can be found at:

<http://www.nottinghamshire.gov.uk/thecouncil/democracy/planning/local-development-framework/mineralsdevplandocuments/adoptedmineralslocalplan/>

The Minerals Local Plan preferred approach can be found at:

[Nottinghamshire.gov.uk/minerals](http://www.nottinghamshire.gov.uk/minerals)”

5.5. Drainage and Sewerage Related

Notes of a meeting between representatives of East Leake Parish Council and Severn Trent Water.

EAST LEAKE PUMPING STATION AND SEVERN TRENT WATER

The Neighbourhood Plan Group, having commented on recent new proposed developments in and around East Leake, has raised concerns regarding the impact of such developments on the infrastructure within East Leake. One area in particular is the pumping station and its capacity to deal with more housing developments, and the impact upon it with regard to flooding and discharge into the brook and surrounding areas.

Cllr Conrad Oatey and Lesley Bancroft, the parish clerk, met with representatives of Severn Trent water on Friday 13 December 2013 to discuss the above. Previous data had indicated that the overflow into the brook from the pumping station had occurred nine times in the previous year, mainly due to flooding. Debris had been left in its wake and caused pollution in the surrounding water courses. Further information is to be sought from Severn Trent water with regard to obtaining the most recent data.

It was very clear, having discussed the capacity of the pumping station with the Severn Trent water representatives, that further housing developments would indeed put a strain on this facility. The Severn Trent water representatives were shocked at the proposals to allow further development as it was felt that the pumping station had never been designed originally to deal with the proposed capacity and that it was already running at full.

Contact is to be made with Rushcliffe Borough Council to ascertain information from them as to what it believes to be the situation with the pumping station in view of possible new housing developments and what its proposals are, or have been, to carry out investigations regarding this infrastructure before granting permission for any further developments.

December 2013

Email Correspondence with Severn Trent Water

1 April 2014, Extract from an email sent from STW to East Leake Parish Council

East Leake STW (volume that passes through an estimated orifice at inlet)
Current as built: 9,065hd & 1,951m³/day
Known Short Term (2014-2019): 10,575hd & 2,249m³/day
Projected Long Term (2020-2039): 11,057hd & 2,287m³/day

29 July 2014 ELNP to STW

Dear Mr Walton,

Stuart Taylor of the Environment Agency has suggested that I contact you.

East Leake is currently drafting its Neighbourhood Plan. Public consultation has revealed considerable concern among residents about the capacity of the sewerage system in and around the village, and its ability to cope with the existing load. Additional load will be generated by 663 new homes that have had planning permission plus the Defence Rehabilitation facility to be built nearby at Stanford Hall.

You will understand that much of what is being said is rumour, but the strength of public feeling is gaining momentum and we are anxious to explore the facts of the matter, so that public fears can be allayed and sensible provision included in the Neighbourhood Plan if necessary. However, to date we have been unable to obtain definitive data and would be grateful for the answers to the questions below plus any other relevant information you can supply.

- What is the current capacity of the pumping station in the village centre?
- What is the current capacity of the treatment works on West Leake road?
- What populations does Severn Trent believe these are serving?
- Are these facilities adequate at present?
- Does surface/storm water get routed via the sewers? If so, do these need to be separated? In what areas of the village does this work need to be done? What is the timetable and budget for the work?
- Is the network of pipes of sufficient diameter to cope with the volume generated, particularly during storms?
- What projections are Severn Trent using to plan the sewage infrastructure going forward in terms of population and/or number of households?
- What upgrades are planned, and when?
- What is the budget for these works?
- What upgrades have taken place during the past 5 years, and at what cost?
- On how many occasions in the past 5 years has the pumping station discharged sewage into the brook? What volumes, and on what dates?
- On how many occasions in the past 5 years have tankers had to be used to move the sewage around due to capacity problems? What volumes were moved from where to where, and on what dates?

Is the long term plan to retain the sewage pumping station in the centre of the village shopping area?

I'd be grateful for a reply by email, and a few members of the project team could meet with you if you feel it would help us gain understanding of the situation.

Yours sincerely

Carys Thomas

On behalf of the East Leake Neighbourhood Plan Project Team

16 October 2014, STW to ELNP

Hello Carys,

I am very sorry for you not receiving a response when you first enquired. Your mail was passed on but clearly not dealt with.

There are a couple of questions I cannot answer but have answered as much as I can. You should receive a completed response soon.

My responses are as follows:

- The Gotham Road PS has a pass forward flow of 63 l/s and a has a consented over flow
- The consented flow to treatment at the works is over 4000m³/day and the current as built flow is less than half of that. Projected growth is still well within the consent.
- Current population figures are that the Gotham Road PS serves a population of around 8,675 and the Sewage Treatment Works serves a population of around 9,065 (the additional is the population from West Leake).
- The works are deemed to be adequate and some potential refurbishment has been identified for the pumping stations. These are to do with two pumping stations in the outlying villages West Leake and Widmerpool and there is one scheme to look at the Gotham Road Sewage Pumping Station Storm tanks.
- There are combined sewers in the area but we currently have no schemes promoted to carry out separation, although this is may be something we would consider.
- Our consultants are currently undertaking a detailed study of East Leake and a list of risks need addressing will be one of the outputs from this study. This should be completed by November.
- We are in consultation with the local authority planners and are basing our growth on data provided by them.
- No upgrades of the sewerage system are currently planned but again, this may change.
- Previous improvements have mainly been to the pumping stations. There has not been anything majorly significant that would have changed the network apart from the new storm tanks at the Gotham Road SPS completed in 2003/2004. Telemetry was installed at the Gotham Road SPS storm tanks in 2008. I have no information to hand as to the cost of these works.
- Questions regarding any discharges to the brook and the use of tankers need to be referred to Service Delivery. (This is being done –response pending)
- I am not aware of any long term plan to replace any pumping station.

It is important to remember that flooding and associated pollutions are often caused by the public sewerage systems being inundated by surface water. In times of severe storm when the natural drainage systems (rivers, water courses, ditches etc) cannot cope, this excess water often enters the sewerage system, which clearly has not been designed to cope with such volumes and as such fails. A significant step to addressing such risks is to ensure that local planners manage all new development in a sustainable manner was the appropriate planning legislation. Under current water industry legislation, once development has planning permission water companies such as Severn Trent, have no power to with hold a right to connect to the public sewerage systems

I would also like to reassure the Parish Council that Severn Trent will undertake improvements to the public sewerage system if appropriate, and we will continue to work with yourselves and all other key stakeholders to ensure all proposed development is managed in such a way as to protect existing residents.

If you wish to discuss please give me a call.

Kind regards

Bill

Bill Walton
Asset Protection Manager
Operations Support Services

27 October 2014, Environment Agency to ELNP

We respond to requests under the Freedom of Information Act 2000 and Environmental Information Regulations 2004.

The sewage pumping station (SPS) in East Leake is permitted to pass forward flows of up to 58 litres per second to East Leake Sewage Treatment Works (STW). Flows over this figure are diverted to the storm tanks, which have a capacity of 308 cubic metres.

East Leake STW has a permitted dry weather flow (DWF) of 1729 cubic metres per day and a Population Equivalent of 9137. Actual measured flows indicate that the average Q80 flow (equivalent to the DWF) for the last four years is 1544 cubic metres per day, i.e. the works has roughly 200m³/day headroom, around 1300 people (at 150L/head).

The discharges from the SPS and the STW are covered by permit reference T/58/45986/R. The treated final effluent from the STW has the following quality limits:

BOD – 15 mg/l

Suspended Solids – 30 mg/l

Ammonia – 5 mg/l (summer), 10 mg/l (winter)

Samples taken on a monthly basis show that the STW has been fully compliant with the above conditions for at least the last 5 years, indicating that the current treatment facility is adequate.

The village is drained by both combined and separate sewerage systems (generally, newer developments have separate foul and surface water sewerage systems). The Agency has no information on whether Severn Trent Water intend to undertake any works to separate surface water from the existing combined systems.

I have attached our Standard Notice which explains the permitted use of this information.

Please get in touch if you have any further queries or contact us within two months if you'd like us to review the information we have sent.

....

External Relations Officer
Customer Services Team

18 November 2014, STW to ELNP

Good Afternoon Carys

I wanted to write to you following your earlier email to Bill Walton – I'm sorry for the delay in our response.

I'm sorry there seems to be concern among the residents about the capacity of the sewerage system and its ability to cope, this must be causing them a lot of upset for which I apologise.

Please find below the answers to your questions in the order in which you've asked:

- **What is the current capacity of the pumping station in the village centre?**
 - The Gotham Road Pumping Station has a pass forward flow of 63 litres per second and has a consented over flow
- **What is the current capacity of the treatment works on West Leake road?**
 - The consented flow to treatment at the works is over 4000m³ a day and the current as built flow is less than half of that. Projected growth is still well within the consent.

- **What populations does Severn Trent believe these are serving?**
 - Current population figures are that the Gotham Road Pumping Station serves a population of around 8,675 and the Sewage Treatment Works serves a population of around 9,065 (the additional is the population from West Leake).
- **Are these facilities adequate at present?**
 - The works are deemed to be adequate and some potential refurbishment has been identified for the pumping stations. These are to do with two pumping stations in the outlying villages West Leake and Widmerpool and there is one scheme to look at the Gotham Road Sewage Pumping Station Storm tanks.
- **Does surface/storm water get routed via the sewers? If so, do these need to be separated? In what areas of the village does this work need to be done? What is the timetable and budget for the work?**
 - They're combined sewers in the area but we currently have no schemes promoted to carry out separation, although this may be something we would consider .
- **Is the network of pipes of sufficient diameter to cope with the volume generated, particularly during storms?**
 - Our consultants are currently undertaking a detailed study of East Leake and a list of risks need addressing will be one of the outputs from this study. This should be completed by mid November.
- **What projections are Severn Trent using to plan the sewage infrastructure going forward in terms of population and/or number of households?**
 - We're in consultation with the local authority planners and are basing our growth on data provided by them.
- **What upgrades are planned, and when?**
 - No upgrades of the sewerage system are currently planned.
- **What upgrades have taken place during the past 5 years, and at what cost? What is the budget for these works?**
 - Previous improvements have mainly been to the pumping stations. There has not been anything major that has changed the network apart from the new storm tanks at the Gotham Road Pumping Station completed in 2003/2004. Telemetry was installed at the Gotham Road storm tanks in 2008. We're unable to provide information regarding the costs.
- **On how many occasions in the past 5 years has the pumping station discharged sewage into the brook? What volumes, and on what dates?**
 - There is a consented Storm Overflow at the Sewage Pumping Station on Gotham Road, therefore following discharge to Storm Tanks that are located at the station any additional spills to the watercourse are consented by the EA and are strictly governed by the consent.
- **On how many occasions in the past 5 years have tankers had to be used to move the sewage around due to capacity problems? What volumes were moved from where to where, and on what dates?**
 - The only time we would tanker from that site would be due to operational failure at the station, the station is working satisfactorily and any spills have been in line with the consent.
- **Is the long term plan to retain the sewage pumping station in the centre of the village shopping area?**
 - There is no long term plan to replace any pumping station.

Flooding and associated pollutions are often caused by the public sewerage systems being inundated by surface water. In times of severe storm when the natural drainage systems (rivers, water courses, ditches etc) cannot cope, this excess water often enters the sewerage system, which clearly has not been designed to cope with such volumes and as such fails. A significant step to addressing such risks

is to ensure that local planners manage all new developments in a sustainable manner was the appropriate planning legislation. Under current water industry legislation, once development has planning permission water companies such as Severn Trent, have no power to withhold a right to connect to the public sewerage systems.

We'd like to reassure you that Severn Trent will undertake improvements to the public sewerage system if appropriate, and we'll continue to work with yourselves and all other key stakeholders to ensure all proposed development is managed in such a way as to protect existing residents.

Kind regards

.....

Customer Care

23 November 2014, ELNP to STW

Thank you for your response. I'm afraid that concerns remain at this end and we request further information.

1. It is now past mid November. Please send a copy of the consultant's report you mention.

2. Gotham Road¹ Sewage Treatment Works

You state that you have no plans to upgrade the sewage treatment works. However your own figures, plus those of the Environment Agency (see documents attached and your response below) indicate clearly that there is inadequate capacity at the treatment works to support the additional houses planned for East Leake (see spreadsheet attached for numbers). In addition to these there is the additional load to be generated by the Stanford Hall development.

3. East Leake Pumping Station

You have not answered the question about the number of discharges into the brook. Our issue is not whether or not these are consented. The pumping station is right in the centre of the growing village. There are great concerns and rumours about untreated sewage being discharged into the brook which runs through Meadow Park (a major amenity area), sometimes flooding onto the children's playground, playing fields and Meadow park. See photos attached. We have no data on how often discharges occur – hence our question. If it is once every fifty years we can allay the fears of residents. If it is several times a year some sort of action is needed. We have already been informed by your staff that in 2012 there were 9 discharges. Please supply the information requested, i.e.

- Annual statistics showing the occasions in the past 5 years when the pumping station discharged sewage into the brook, including if possible the volumes and dates.

Please will you also supply a copy of the consent T/58/45986/R or indicate where we can find this. Does it stipulate allowed frequency of discharges and/or volume?

We appreciate that it would be your intention to undertake any works required to support the additional demands, however without any details of the work proposed or timescales it is difficult to be reassured by this. As indicated in the original email, we would find it helpful to meet to discuss – would this be possible please?

¹ Should be West Leake Road Sewage Treatment Works – clarified in further email

4 December 2014, STW to ELNP

Thank you for your recent emails

You'd raised some concerns and requested some further information. I'll comment on these in the same order for ease of reference.

The report was delayed and we've only received it this week. I've summarised the main points for you.

- Taking into account As Built (AB), Known Short Term (KST) and Planned Long Term (PLT) development, there is a predicted increase in spills to the Kingston Brook from both the Gotham Road Pumping Station overflow and the CSO. As such there is a pollution / consent risk, although further modelling would have to be carried out to determine the precise extent.
- The Bloor estate pumping station has the required level of storage for KST and PLT development.
- When modelling KST and PLT development, there is a predicted increase in surcharge frequency of the sewerage systems
- There is no predicted flooding up to a 40 year event
- Schemes already promoted:
 - Quality improvements to the treatment works – potential completion in 2020
 - Separation / Capacity in the Gotham Road pumping station catchment (as mentioned before) – potential completion 2017
- Recommendations:
 - Work with all stakeholders to better understand the potential growth in the area
 - Additional modelling as the plan becomes clearer
 - Other improvements to be considered as necessary

Gotham Road Sewage Treatment Works – I can confirm that we looking into the possibility of separating the system upstream of Gotham pumping station to create spare capacity to accommodate any potential growth in the area – although no final decision has been made. We're unsure as to why it's believed there is a problem here because the letter from the EA states the opposite:

- The works has roughly 200m³/day headroom, around 1300 people (at 150L/head).
- Severn Trent Water has been fully compliant with the above conditions for at least the last 5 years, indicating that the current treatment facility is adequate.

East Leake Pumping Station – The consent will not stipulate the number of spills allowed or the required volume, it specifies the flow rates that must be met by the SPS prior to any spills being consented. I've been unable to find any information to confirm when the pumping station discharged sewage into the brook and the possible volumes involved.

As requested, I've attached a copy of the consent T/58/45986/R.

(See attached file: T_58_45986_R_header.tif)(See attached file: T_58_45903_R_03.tif)(See attached file: T_58_45986_R_04.tif)

I hope this information is helpful. Our Asset Protection Manager, Bill Walton will be happy to discuss this further with you – he can be contacted on 07771 555764.

19 December 2014, ELNP to STW

Thank you for the very helpful telephone conversation we had on 12th December. The actions I noted were:

- You would write notes of the phone call and pass them to the Strategic Planning department within your organisation, and also send a copy to me. This department will be considering the consultant's report you have received on the risks at East Leake, to decide whether/when action is required.
- I would send you the NP and statement of consultation– see attached and information below.
- You will continue to attempt to get the information about discharges into the brook
- We will aim for a meeting sometime in January after these actions have been completed

The latest draft of the Neighbourhood Plan is attached. (This version has not been published yet, because we are still working on amendments to the consultation version to produce the submission version.) The statement of consultation, and other supporting documents are at:
<http://www.east-leake.gov.uk/neighbourhood-plan>

Severn Trent did not respond to the statutory pre submission consultation, which closed on 31 October.

Sewage/Flooding is dealt with in policy H1, section 2.1 of the Neighbourhood Plan (attached) and 5.5 of the Statement of Consultation (<http://www.east-leake.gov.uk/docs/socv5-16Dec.pdf>). See also the flooding photo gallery at <http://www.east-leake.gov.uk/docs/Flooding.pdf>. Flood risk is also considered in policy H7 (e) and Fig 2.6/2 on the Neighbourhood Plan.

We are aiming to finalise the documentation before Christmas and submit to Rushcliffe for examination etc in January.

Details of the Stanford Hall development are at <http://www.stanfordhallredevelopment.org.uk/>
Our contact is ..., and I expect they will be able to give you projections of population equivalents at the various stages of development over the next few years for purposes of planning sewerage demands, if you do not already have this information.

5 January 2015, STW to ELNP

Many thanks for your email and for the copy of your NP.

Further to our conversation, I have raised your concerns with my colleagues in the Strategy team and in response they have stated:


- Our feasibility modelling does include the impact of the Stanford Hall development.
- The proposed separation scheme is expected to improve the performance of the Combined Sewer Overflow, as well as providing additional capacity in the system.
- Work is currently ongoing to confirm that the proposed separation scheme is viable and to confirm the actual performance benefits.
- However, in light of the concerns you have raised over pollution incidents, further work has been instigated to investigate this further and to determine whether or not a pollution reduction project is needed, in addition to the separation scheme.

(Correspondence Continuing)

5.6. Playground Consultation

At the end of 2012/beginning of 2013, a group of parents, working with the Parish Council Amenities Committee, undertook a consultation on play facilities in East Leake. Two drop-in sessions were held, posters put up around the village and on the East Leake website and ELCP facebook page, and a short questionnaire and a picture tick sheet was used to gather views. Children and parents at 'Messy Church', Brownies and Guides were also consulted, and a number of emails received in response to the posters.

105 responses to the questionnaire were received, with clear support for a refurbishment of the Gotham Road playground. Key equipment that both children and adults would like to see in the park was identified. It was shown that the park clearly needs to provide more variety and stimulating equipment especially for the over 5s, and that a landscaped, well designed environment would support community engagement.

EAST LEAKE 'GOTHAM ROAD PLAYGROUND' CONSULTATION 2012						
	1. What do you like about the Gotham Road playground? / What equipment do you like in the playground?					
	2. What don't you like about the playground? / What equipment do you not enjoy in the playground?					
	3. What other playgrounds do you enjoy using? Why?					
	4. What equipment would you like to use in the park?					
	5. Would you like to see any landscaping in the playground area? eg trees, paths etc.					
<table border="1"><tr><td>No. Consulted:</td></tr><tr><td>Age: 0-4</td></tr><tr><td>4-7</td></tr><tr><td>7-11</td></tr><tr><td>11+</td></tr></table>		No. Consulted:	Age: 0-4	4-7	7-11	11+
No. Consulted:						
Age: 0-4						
4-7						
7-11						
11+						

The results of the consultation were presented to the Amenities Committee in January 2013. See Appendix 7 for the presentation.

The working group then contacted company specialising in playground equipment to draw up designs and in January/February 2014 the various plans were taken to schools and nurseries for comment, with the assistance of the newly formed Youth Parish Council.

In November 2014 East Leake Parish Council was successful in a People's Millions bid, and awarded £50,000 towards upgrade of the playground.

5.7. Transport Related Correspondence

5.7.1 In July 2013 the following letter was sent to relevant agencies on behalf of the Neighbourhood Plan Project Team.

The East Leake Neighbourhood Plan Project Team is preparing a Neighbourhood Plan for the village of East Leake and I attach the draft vision which has been prepared as part of this process.

In the context of the scale of development proposed for East Leake (a minimum of 400 homes by 2028), the Project Team is interested in the likely development of public transport services to the village.

We would therefore welcome your views on the attached draft vision statement in general and on the following specific questions:-

- What is the expected impact on the commercial viability of the existing No.1 Nottingham – Loughborough bus service of the opening of the NET extension to Clifton and the associated Park & Ride site and the widening of the A453 through Clifton?
- What assumptions have been made in modelling demand for the NET extension about usage of the Park & Ride site by residents of East Leake and its surrounding area?
- What plans are there to improve the current level of public transport provision to East Leake given the scale of development proposed?
- What plans are there to ensure that the current level of public transport provision to East Leake is maintained as a minimum?

I look forward to receiving your response and please contact me if you require any more information about the Neighbourhood Plan.

The following reply was received from Nottinghamshire County Council:

Thank you for your email concerning the transport plans for East Leake.

I note that you have copied the tram team and NCT in to your original email as they will certainly be able to supply further details regarding their position with regards to services post tram.

The County Council is facing severe budgetary constraints and we are looking at having to reduce our local bus budget by £2m over the next year. This will severely affect the level of services that the County Council will be able to provide in the future. We are currently considering the level of transport provision that we provide on a service by service basis to consider our options. We do not have any plans to extend or further support services in the East Leake area. This does not mean that our plans will not change when the situation with the tram is clearer and bus companies have decided on their strategic position. However, our financial situation is quite dire.

As an aside from the above we also have to lose 12 staff over the course of the next couple of financial years and all those who wanted Voluntary Redundancy have taken that option

over the last few years so it looks likely that compulsory redundancies will be on the cards this time around.

Best regards.

Clive Greyson

Transport Operations Manager (South)

Transport and Travel Services.

The following reply was received from Nottingham City Transport

I refer to a letter dated 3rd July, 2013, sent by Chris Saffell to the NCT Travel centre. The letter refers to the East Leake Neighbourhood Plan Project Team and I can respond to the questions posed as follows:

- 1) At this stage we are uncertain as to the impact on patronage on NCT service 1 of the Net extension to Clifton. We believe that the two services will generally serve different markets and thus we are not planning to make any alterations to service 1 in anticipation of the tram extension.
- 2) Questions relating to demand forecasts and modelling for the tram extension need to be referred to the NET Project Team at Nottingham City Council.
- 3) As a commercial bus operator we will respond to changes in the market and look to grow our business where and when the opportunity arises. The development of East Leake will provide such an opportunity but I cannot comment on likely service levels in 2028!
- 4) We have no plans to alter the current level of service provision on service 1.

Should you require further information please do not hesitate to contact me.

Yours sincerely,

David Astill

Commercial Manager

Nottingham City Transport Limited

Lower Parliament Street,

Nottingham. NG1 1GG

5.7.2 Travel plans were obtained and studied from the local schools, and two major employers – British Gypsum and Weatherford. (These documents are available on request.)

5.7.3 East Midlands Airport was consulted regarding both East Leake residents who work at the airport and those who use the airport as passengers. The reply below was received on 20 November 2013.

As you may be aware, the airport is currently in the process of updating its Master Plan and supporting policies. This includes our Surface Access Strategy (which contains Travel Planning policies for employment at the Airport). We are aiming to go out to public consultation on the draft plan between January and March 2014, and seek to publish the final document in spring 2014.

You can however still access our current strategy document by following the link below. This sets out our aspirations but please be aware the document was drafted in 2006, before the economic downturn, and therefore a great deal of it is out of date, and many aspirations are no longer feasible.

http://www.nwleics.gov.uk/files/documents/east_midlands_airport_surface_access_strategy/East%20Midlands%20Airport%20Surface%20Access%20Strategy.pdf

As part of our preparatory work on the plan draft, we have conducted an employee survey this year, and have some basic analysis of the raw data, but are still working on detailed analysis. Part of the detailed analysis will be to map the post code data that we have gathered. We were only able to gather around 3,500 postcodes - around half of the total population of employment, so it will be representative only. In addition we will only be able to analyse down to district level, so I will be able to give you figures for Rushcliffe once we've finished the work, but we are unable to analyse to a level detailed enough to give you East Leake specifically.

With regards any aspirations for a bus serving East Leake, I am sorry to say that it is not on any immediate wish list. As you know the airport has invested around £2.2 million pounds into public transport over the past 10 years, and developed 24/7 bus links to Derby, Nottingham, Leicester, Loughborough, Long Eaton and some of our neighbouring villages. However it is not feasible for us to invest pump-priming money into routes that do not show a very strong likelihood of becoming commercial within a few years of investment. At the top of our list of priorities would be towns like Coalville (who currently only have a day-time service) and Ilkeston, both of which have larger than average indices of social deprivation and unemployment, where our policy would be to work in partnership with our Airport Academy, Job Centre Plus and other agencies to assist people into work at the airport.

The closest we would get to seeing a route in the East Leake area would be in the event that a route between Clifton, East Midlands Parkway Station and the airport becomes commercially viable and sustainable. We have recently met with the developers of the proposed East Midlands Rail Freight Hub which, if it receives planning permission, will be built just north of the Airport. Once fully developed, the East Midlands Rail Freight Hub has the potential to double the number of people working within the immediate vicinity of the airport (they are anticipating a total number of around 7000 employees at their site once fully operational). As part of their mitigation measures for development they are proposing investment into both improving the existing network that has been developed by the airport but also developing one or two new routes. This route has been identified as one of those. However it should be said that if such a route ever became feasible, it is highly unlikely to be routed via East Leake as this would add significant time penalties, however this would no doubt form part of a detailed analysis of route timings, catchment, and cost should such a route ever become considered viable.

I hope the above is helpful and I'm sorry that I cannot be more positive.

Kind regards
Colleen

Colleen Hempson
Surface Access Manager
East Midlands Airport
MAG

5.8 Local Business Needs

East Leake Neighbourhood Plan – Business Consultation, 2013-14

Introduction

This survey was undertaken in 2013/14 to inform the process of formulating the East Leake Neighbourhood Plan. It supplements the information gathered by the Community Plan Questionnaire in 2012. The business survey deliberately sought the view of businesses in the village.

Method

A survey was designed by the subgroup of the Neighbourhood Plan Project Team who led this section of research.

THE NEIGHBOURHOOD PLAN BUSINESS SECTION

The Neighbourhood Plan Group are now collating all the information gathered from the Community Plan questionnaire, drop in days etc to produce the East Leake Neighbourhood Plan . This document is a legal document and has to be referred to by the government when making decisions on the future planning in East Leake. If we attach statements from individuals to back up the plan it re inforces the information in the document.

PLEASE complete the form below if you would like your thoughts for the business section to be included in the East Leake Neighbourhood Plan.

BUSINESS NAME

TYPE HISH STREET RETAILER HIGH STREET SERVICE

TICK MOST HOME BASED RETAILER HOME BASED SERVICE

APPROPRIATE ONLINE RETAILER ONLINE SERVICE

OTHER – PLEASE GIVE DETAILS

The village and the community play an important part in the future of your business.

Please write down a couple of bullet points to tell us what you think could be included in the Neighbourhood Plan to help your business

-
-
-

Signed

Dated

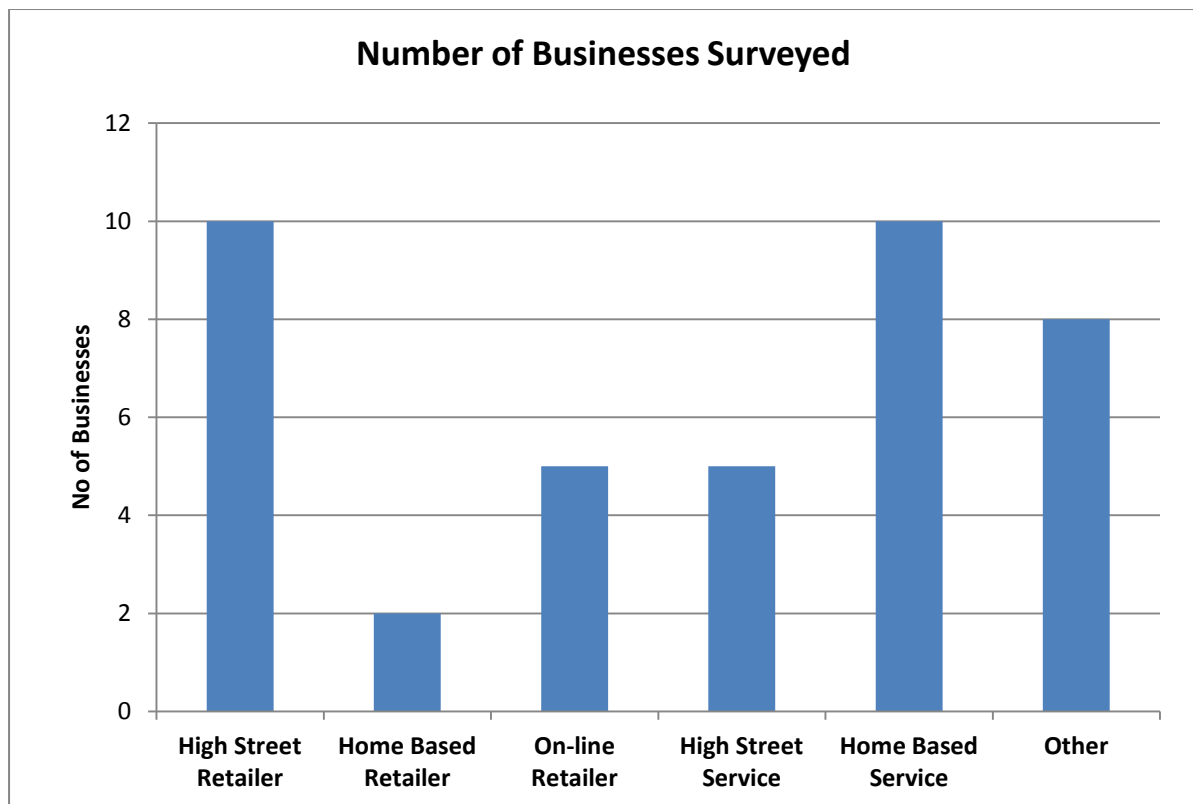
Name

Tel/Email

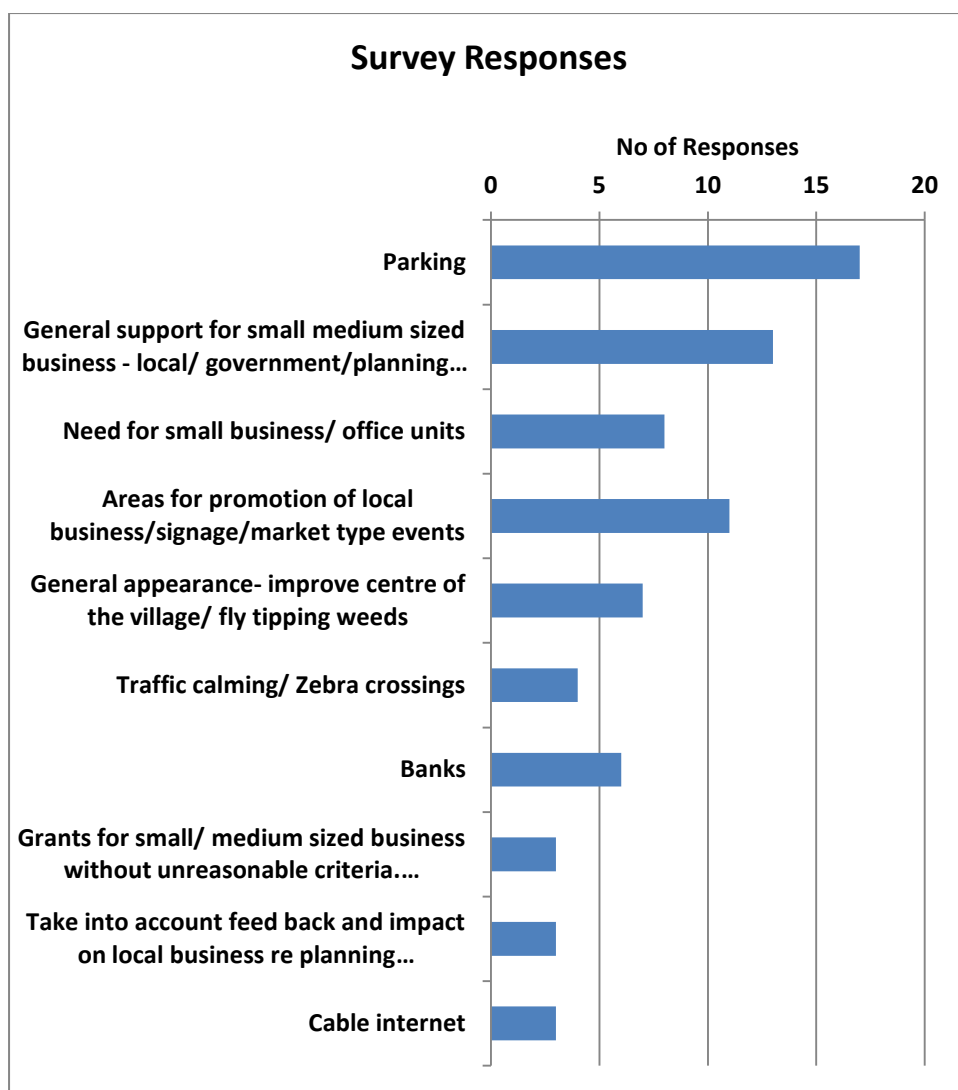
The form (see above) was distributed in the period from August 2013 to April 2014 to 73 businesses.

Results

40 completed forms were received, a response rate of 54%. The categories of businesses are shown in figure 1 below.



The response to the survey was very good and all the comments are now on record for future use. We will use the table of results to put forward future planning policies for the village and those that do not apply to the planning issues will be passed onto appropriate groups eg the Community Plan Group and Parish Council.



Suggestions received give ideas for items that could be included in the Neighbourhood Plan to help local business. These were analysed by subject area, giving the results shown in figure 2 above, and subject area broken down by business type, as shown in figure 3 below.

The most popular suggestion (17) was improvement to village parking. This is reflected in the Neighbourhood Plan in the Village Centre section, which includes parking as one of the priorities for land use in the centre of the village.

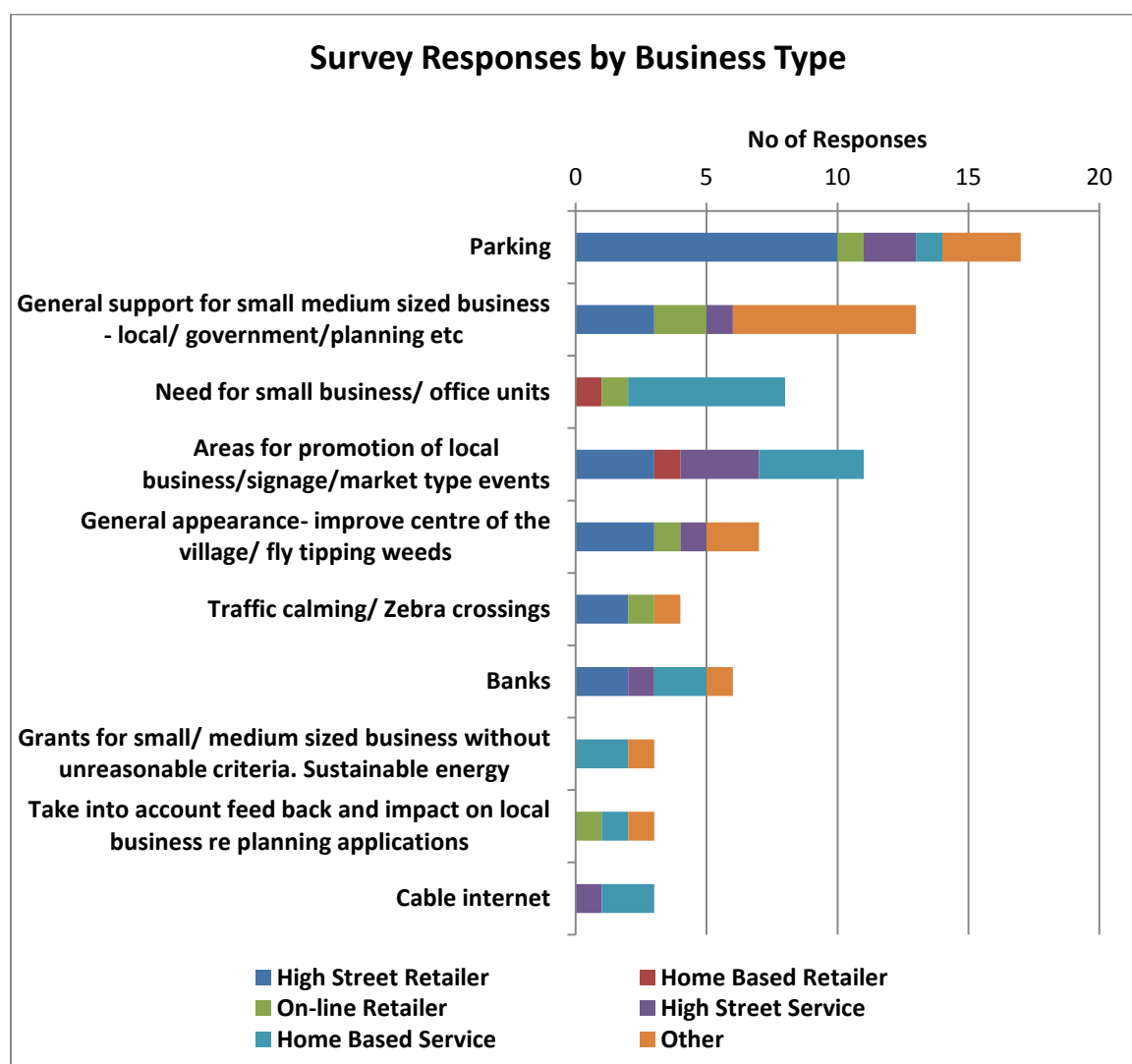
13 responses were indicating that they felt they would appreciate more support with planning issues and 8 made points relating to the need for small business/office units eg “Designated area (s) for business/business’s - within or on edge of village”, “More available buildings/space for small business”, “Availability of inexpensive industrial and office units”, “Sympathetic to change of use” and “I would like to have the opportunity to expand my business either at home or within the local community”, are examples of the comments relating to this. 3 comments also felt feedback from local business should also be taken into account regarding planning applications.

7 comments were on the general appearance of the village. “Improvements to the village centre so it is more appealing to visitors” is an example this could also tie in with the comments about the

help and promotion of local business eg “Grants and funding made available and managed on a local scale”, “Parish Council to promote, work with local business on a local and surrounding area basis” , “Advantages of using local business”, and “Marketing East Leake as a complete shopping area”. “Grants and funding made available and managed on a local scale” and “Grants for small/ medium sized businesses without unreasonable criteria” were another couple of points raised.

11 comments felt the village would benefit from the return of either a bank or improved internet or petrol station.

4 suggestions mentioned traffic calming/zebra crossings, and this is one of the key objectives of the proposed scheme to alter the layout of the t-junction area, in the Village Centre section of the Neighbourhood Plan. Other issues raised could not be directly tackled by a Neighbourhood Plan Policy, but have been passed on to other bodies, including the Parish Council and the Community Group other bodies, including the Parish Council and the Community Group.



Availability of Premises – Statements from Businesses

The following statements have been received from businesses currently or recently seeking premises in East Leake, demonstrating support for any development that made retail units available.

1. BABY Boutique Ltd



After recently relocating to the village of East Leake, our decision to enquire on the commercial property in the area was due to our vast number of existing East Leake and surrounding local village customers that have mentioned on many occasions they “would love our boutique to be located with their village” and to be close to them within East Leake.

After trying for over a year to bring my business to East Leake / find a retail unit / available retail space we were turned down for the retail units that became available on Gotham Road with no further explanation than “proposed use is not the one we require “

If there were more retail space / retail units made available in and around East Leake, more people would be able to bring their businesses to the area – which we are constantly told is what the community wishes for and community leaflets suggest. These new businesses and retail areas would only but bring further trade to existing retailers and traders within and around East Leake.

With a growing population with the plans and building of numerous new housing and further expansions to the area, the existing retail area available is just not adequate to take the growing East Leake community.

I am in full support in bring new businesses and retail space to the area

Kind regards

Vicky Clarke

BABY boutique UK

13/06/14

2. Captcha Photography Ltd

My priority was to find new business premises in East Leake as this was the basis of my main customer base, my marketing and everything that I had committed to do (long term advertising) was in the village. I left my existing premises in February 2013 (having started my search in December 2012). I was looking for space that was at least 25ft long and 15ft wide, it didn't matter if this was retail/office or just a unit in a warehouse. My space was a specific request due to my Photography studio sizing needs. I had found several options outside of East Leake in surrounding towns/villages but none that ideally suited my needs to the long term lets required. I was in contact with the Parish Offices, I had already contacted several landlords in case of any new opportunities that arose and did contact some of the larger commercial letting agencies but there was nothing available during this time to fulfil my sizing requirements.

Thankfully in January 2014, one of the landlords had a shop available that was being refurbished and I found the perfect spot for the business, this on a positive note was very central to the village and had a retail frontage.

In the time the company was studio-less I found a temporary stopgap by renting a conference room at the Yew Lodge Hotel in Kegworth, whilst not ideal (I had to rebuild and take down my studio every time I rented it) and keep the studio equipment in my car and home it enabled me to at least run studio photography 3 or 4 times a month and keep my business afloat. Without this option I would have had to close the company down.

Hayley Masom

12/06/14

Audit of Retail Premises within the defined Village centre, July 2014

<u>Main Street</u>	<u>26 properties</u>	<u>None vacant</u>
<ul style="list-style-type: none">• Furniture Store• Chip Shop• Fruit & Veg• Flower• Hair• Butcher• Pizza Takeaway• Estate Agent• Chinese takeaway• Beauty• Coop Food• Pet• Car repair• Solicitors• Pub• Post Office• Estate Agent• Hair• Charity• Chinese takeaway• Betting• Restaurant• Dentist• Funeral Director• Car repair• Pub		
<u>Gotham Road</u>	<u>14 properties</u>	<u>None vacant</u>
<ul style="list-style-type: none">• Optician• Indian restaurant• Carpet• Photographer• Physiotherapist• ☺• Dentist• Chemist• Hairdresser• DIY• Bakery• ☺• Vets• Card & Gift		

Survey undertaken 10/7/14

Excludes upstairs offices and non-retail units

5.9 Meeting with East Midlands Airport

Notes of a meeting between East Leake Neighbourhood Plan Project Team and East Midlands Airport, 10 April 2014

Present

Jon Bottomley, Principal Planner, East Midlands Airport

Carys Thomas, East Leake Neighbourhood Plan Project, East Leake Parish Council

Chris Saffell, East Leake Neighbourhood Plan Project (lead for Transport)

John Thurman, East Leake Neighbourhood Plan Project, East Leake Parish Council

Marie Males, East Leake Parish Council

The meeting took place as part of consultations for the EMA Masterplan and the East Leake Neighbourhood Plan.

1. Journey to Work Information

CT explained that the Neighbourhood Plan was interested in data about journeys to work from East Leake to the airport. JB showed round data that is collected annually via the 90 or so companies across the EMA site about their employees. The number of employees stands at just short of 7000. Postcode data is available for around 50% of these, giving a good sample on which to extrapolate. It is estimated that 404 employees live in Rushcliffe. Post code data is collected to the first 5 characters, which could give a more detailed breakdown for the East Leake area.

Actions: CT to supply required postcodes and JB to provide more detailed data along with overall summary data, suitable for the NP evidence base.

[Post meeting note: The NP project would like data for LE12 6, which is not exactly East Leake, but will give us a good indication. This code largely covers East Leake, Costock, Rempstone, Willoughby on the Wolds, and Wymeswold. A few outlying properties in Stocking Lane, Travels Hill etc are in East Leake Parish but do not have an LE12 6 postcode.]

2. Economic Connections

JB asked about businesses in East Leake that might have a particular economic relationship with EMA. None sprang to mind that would have particular cargo needs, although with businesses of all sizes in the village, from individuals to British Gypsum, it was likely that there was considerable passenger traffic generated. The planning application for Stanford Hall was mentioned, as this could generate considerable passenger traffic via the airport. JB commented that they were particularly interested in businesses with a connection with other countries that involved flights from another airport.

Actions: CT to follow up with businesses if the opportunity arises; JB to see if there is any data from the Chamber of Commerce Survey; CT to forward to JB details of the Stanford Hall development.

[Post Meeting Note: See <http://www.stanfordhallredevelopment.org.uk/> and also the plans on the Rushcliffe Borough Council website, <http://www.document1.co.uk/blueprint/>, planning applications 12/02071/LBC and 12/02070/HYBRID]

3. Bus Services

Possibilities for bus services between East Leake and the airport were discussed. It was noted that to date there has not been the critical mass to make a service viable. Services tend to be North/South rather than East/West. Skylink services connect the airport every 20 / 30 minutes with Nottingham, Derby, Leicester and Loughborough, with connections to several other settlements/suburbs that are en route. These services are financially self sustaining and can operate round the clock. Possibilities of rerouting via East Leake were discussed, but the services are sensitive to overall journey time.

Forthcoming developments that could increase demand (and thus improve viability) for a service routed via East Leake included: M+S at Castle Donington, the rail interchange, development of the power station site, 600+ new homes at East Leake, 5000 homes south of Clifton (with East Leake Academy possibly being the catchment secondary school), the tram line extending to Clifton, Stanford Hall Rehabilitation Centre, 975 potential homes at Cotes.

CS commented that the NP transport policies as drafted include an aspiration for development of public transport via developer contributions.

JB commented that they are not the bus operators, but they do have close links with them and can continue to explore possibilities into the future. He noted that a bus via East Leake and Gotham had been included as an aspiration in the Masterplan.

East Midlands Parkway and HS2 were discussed in passing as possibly being of relevance in terms of future public transport discussions.

JB explained that 69% of airport staff journeys were currently drive alone, and they were hoping to reduce this by promoting car share. It was agreed that the East Leake Parish Council Newsletter could possibly help to promote this, and also that it could be of interest to the Community Plan Group.

Actions: **JB the airport will** continue to explore options for promoting bus services as opportunities arise; **CT** to alert Community Plan Group about car share, **JB** to provide a short paragraph on the car share scheme for the newsletter.

4. Aircraft Noise

CT advised that, in the free text question in the Community Plan Questionnaire asking for the things residents did not like about living in East Leake, aircraft noise had topped the list with 17% of all comments.

See <http://www.east-leake.co.uk/uploads/report-on-the-east-leake-community-survey.pdf>

MM commented that statistics on complaints show a very low level from East Leake, especially when compared with areas such as Kegworth. It was thought around the table that residents in general “get used to it”, but that people who move into the area find it the most disturbing. It was also acknowledged that aircraft technology had improved and planes in general are now quieter.

CT asked whether, although East Leake falls outside the immediate area of the airport, there should be any mention of additional sound insulation for new houses in the NP to alleviate problems. JB advised that they normally did supply information of this kind in response to planning applications, and to local authority planning strategy consultations. They also had paragraphs on creation of areas of standing water (safeguarding). JB commented that the NPPF had dropped previous planning requirements about noise (PPG24) and that airports were pressing for this guidance to be returned as it was helpful in minimising problems.

Actions: JB to send CT the long term noise forecast contour. JB to advise on wording for CT to include in the housing section of the NP. JT as Chair of East Leake Planning Committee to ensure that airport issues are included as planning applications come through the Parish Council.

5. Publicising Community Trust Fund/Masterplan

JB and MM explained about the Community Trust fund which can award between £500 and £1000 to local community causes. It was agreed that a short paragraph advertising this could be sent to Ron Hetherington, editor of the East Leake Parish Council newsletter, for inclusion in the next edition. An exhortation to local residents to respond to the Masterplan consultation could also be included.

Action: JB to send text to Ron Hetherington via parish office email – 41arishclerk@east-leake.gov.uk.

Post Meeting response from Jon Bottomley

- Thanks for the confirmation of the postcode. I’ve been through the Employee Survey data and can do a breakdown to LE12 level, unfortunately we don’t have the data to LE12 6 level. The Survey shows that there are 6,730 people working on the site in 88 companies. EMA out-performs other UK airports in its on-site employment largely as a result of its cargo and cargo-support activity. Despite the recession and the slow-down in the economy, on-site employment at EMA has increased by 3.7% compared to the last survey in 2011. The break-down in jobs is 42% cargo activity, 40% passenger activity and 18% other. The survey included place of residence (sample size of 3,847), this showed (the post codes were corrected for the county) that 42% of on-site staff live in Derbyshire, 24% in Nottinghamshire, 23% in Leicestershire and 11% other. Breaking the place of residence data down further, 404 employees live in Rushcliffe district. When a ratio of the District’s working population is applied (Office of National Statistics) 1 in 137 of the District’s residents work at the Airport. By this measure, Rushcliffe performs well, with only North West Leicestershire (1 in 47), South Derbyshire (1 in 66), Erewash (1 in 80) and Derby (1 in 108) performing better. The survey also shows that 219 employees live in the LE12 postcode area.

- We’re still waiting for data from the Chamber of Commerce’s Business Survey. If there is anything

of interest to East Leake and it's businesses, I'll let you know.

- A paragraph on Car Sharing for the Parish Newsletter – The airport works to encourage passengers and staff to access the site using public transport and other sustainable travel choices. There are good bus links from the Three Cities, but for the smaller towns and villages public transport can be difficult. To help people who work at the airport with their journeys, the airport has a car share scheme. This has many social, environmental and financial benefits and it helps cut congestion in the local area. If you work at the airport or in and around Castle Donington / Kegworth then drivers and passengers can get more details of car sharing at the airport and register at <http://www.magworld.co.uk/magweb.nsf/Content/CarShare>

- Details of the Airport's noise policy and noise contours are on our website <http://www.eastmidlandsairport.com/emaweb.nsf/Content/Noise>

- A paragraph on housing and noise for Parish Council planning consultation responses – East Leake is close to the approach to Runway 27 at East Midlands Airport and there can be a high level of aircraft activity in the area. For approximately 70% of the year, arriving aircraft approach the airport from the east, and East Midlands Airport operates on a 24 hour basis with a substantial level of night activity. New residential developments should ensure that appropriate sound insulation measures are in place. Details of the airport's measures to manage the impact of aircraft noise can be found in the East Midlands Airport Noise Action Plan and Sustainable Development Plan. (<http://www.eastmidlandsairport.com/emaweb.nsf/Content/Noise> and <http://www.eastmidlandsairport.com/developmentplan>)

- A paragraph on aerodrome safeguarding for Parish Council planning consultation responses – The airport is safeguarded from developments in the local area that may affect safe aircraft and airport operations. These developments include tall structures, developments that can attract birds and wind turbines. The airport is a statutory consultee under the provisions in Circular 1/2003 and their views should be sought and comments fully taken into account in considering applications for planning permission. The airport can be contacted at safeguarding@eastmidlandsairport.com

- A paragraph on the Community Fund for the Parish Newsletter – The airport operates a Community Fund that works to bring lasting benefit to those areas most affected by the airport's operations. Established in 2002, the independent Fund has helped over 800 initiatives benefit from over £600,000. Money from the Fund has gone to a diverse range of projects from equipment for village halls to the development of wildlife areas. All applications for Community Fund grants (max £2,000) are assessed by an independent committee who bring their experience and local knowledge to make sure that grants are used to the maximum benefit of the community. If you have or know of a local project that could benefit, then get in touch. Further details can be obtained from community@eastmidlandsairport.com or 01332 818414.

5.10 Meeting about East Leake Schools

East Leake Neighbourhood Plan

Notes of Meeting 24 April 2014 to discuss planning of East Leake school places

Present:

Jane Butler, Headteacher Lantern Lane Primary and Nursery School

Lynn Gilhooley, Section 106 officer, Nottinghamshire County Council

Gary Kenny, Head teacher Brookside Primary School

Graham Legg, Headteacher East Leake Academy

Conrad Oatey, East Leake Parish Council, Chair of East Leake Neighbourhood Plan Project Team

Carys Thomas, East Leake Parish Council, Project Manager East Leake Neighbourhood Plan

John Thurman, East Leake Parish Council, Rushcliffe Borough Council

Ian Webster, strategic lead on pupil place planning, Nottinghamshire County Council

Jonathan Smith, Area Officer for Rushcliffe and Broxtowe, Nottinghamshire County Council

CT described the East Leake Neighbourhood Plan project and progress to date. Copies of the vision leaflet were tabled. The meeting had been called as part of the consultation process for drafting the plan. Consultation with residents is revealing a high degree of concern about the provision of primary school places, given the number of new homes that have already been granted planning permission. The Neighbourhood Plan could include statements on preferred locations for any additional school provision. It is also drawing up a strategic footpath network, and walking routes to schools need to be considered.

IW described the pupil planning and capital processes. Numbers of school children went down over a number of years until recently, and schools were encouraged to use space for community functions such as Sure Start Centres. However rolls are now going up, and schools are filling up from the bottom. Capital grants from the government are available where growth is linked to “basic need” (including overall population growth). The Education Authority is in constant discussion with Rushcliffe and developers about school places for new developments, funded by S106 agreements, where there is no existing surplus capacity in local schools. 100 new homes are reckoned to require 21 primary school places. Wherever possible existing schools are expanded, but there comes a point when a new school is needed. 210 children is the minimum size for a new primary school, requiring 1.1 hectares of land and £3.5 M capital.

JS described the current situation at East Leake. Numbers are rising. The two primary schools are full, struggling to accommodate numbers even without the new housing developments, and in some cases are forced to have class sizes that are larger than the ideal. Shortage of space is most acute at Lantern lane, which is difficult to extend due to design and site limitations. As it is a PFI school, any building work on the site is subject to a 10-12% charge from the PFI. Some expansion is possible at Brookside.

The plan for Lantern Lane is to build 4 extra classrooms in an annexe across the road, on a site provided by the developer. This will be part funded by the developer, part funded by existing S106 money (from the latest Gotham road development). The portable classrooms, which have reached

end of life, can then be removed. That will take Lantern Lane up to 420, which would be the maximum expansion. Years 5 and 6 will probably be in the annexe, but otherwise part of the school (e.g. for assembly, dinner time), and various discussions are ongoing to make road crossing etc as safe as possible. The annexe will be maintained by the local authority, not part of the PFI.

Options for Brookside are to remain at current size (210) or increase to 315 (the maximum deemed viable for site). This is a governor decision, and this will need to be made soon. Whether Brookside expands or not there will be insufficient capacity for all the houses planned, and another primary school will be needed for the village. The local authority is interested in ascertaining community views on the most appropriate location.

Both JB and GK mentioned the need to increase overall school infrastructure along with any extra classrooms – hall, dining facilities, kitchens, playgrounds, toilets etc. They also raised concerns about the interim situation, i.e. extra children arriving before additional classrooms are in place. The S106 funding system introduces a delay as funds are not released until a defined number of houses have been completed. The LA cannot borrow against a promise of S106 funds, and building schools takes time after the land is made available. CT advised that the Neighbourhood Plan is interested in protecting East Leake against coalescence with neighbouring villages to keep it a distinct community, and thought that placing children in schools outside East Leake would be very unpopular with parents.

East Leake Academy is not currently at capacity, but numbers are expected to grow. In addition to accommodating secondary children from the new developments in East Leake, it will be taking children from the large development south of Clifton. There is space on the site to expand it in due course.

IW explained that the new primary school would be an academy. The Local Authority's role is to procure and fund the set-up costs for the school, including a subsidy while the school is filling. They advertise in order to find an academy trust to run the new school. Any offers of academy sponsorship are sent to the government for a decision about preferred sponsor. There could be a recommendation to the government by the Local Authority if they run a pre-selection process.

The new school would serve the south side of the village and the site would probably have to be provided by a developer, in discussion with Rushcliffe. The Kirk Ley site was mentioned as a possibility – the largest remaining site, on the bus route, but quite far out of the village and up a hill. Looking at the sites in Rushcliffe's Strategic Housing Land Availability Assessment 2013, site 542 was mentioned, adjacent to the PFI complex. This could provide an additional school on the same campus, possibly combining with Lantern Lane to give infant and junior schools. Site 542 is, however, too small to expect it to bear the cost of providing a school site.

With a new school in place, the primary catchment areas could be redrawn but it was noted that as an academy it would not necessarily have a defined catchment area and could serve the whole community.

It was noted that north/south footpaths will be needed wherever the new school provision is made. A school on the Kirk Ley site would need improved pavements into the village along Brookside, but the Bley Avenue link paths would prove convenient to provide access from Woodgate, the Trees estate etc. Relevant experts in NCC would provide advice on this.

Actions agreed:

JS/IW to provide statistical data on pupil number projections for the NP evidence base.

East Leake Parish Council to reply on preferred location for a third primary school.

All parties to stay in touch as the situation develops.

5.11 Health Related Meetings and Correspondence

Meeting with Rushcliffe Clinical Commissioning Group (RCCG) – 30th September 2014

Present: Lynne Sharp, Head of Governance and Integration, Rushcliffe CCG
Conrad Oatey, East Leake Neighbourhood Plan Group (ELNP)

Purpose of Meeting: To introduce aspects of the draft ELNP, and encourage response from RCCG.

- CO explained the context of Neighbourhood Plans, and why they could prove important to the local community. The current situation in East Leake with regard to approved planning applications was also explained.
- Copies of the Consultation Summary of policies were handed over, and discussion then ensued on Policy H1, with particular reference to the ability of the current Health Centre to meet demand for health services in the period up to 2028 (the ELNP plan period).
- LS explained the complexities of funding for any new health facilities, where Section 106 money alone would not meet the costs. The process involves several parties, including the local Area Team of NHS England, RCCG and the Practice. In essence it could require the GPs to be willing to take out a mortgage to pay for any new building, for which the NHS would then provide a notional rent. The financial climate in all public services is challenging, so any funding is extremely limited. A full business case would need to be developed and the proposal would be prioritised against other competing developments.
- LS also remarked that the direction over the last few years has been towards (fewer) larger Health Centres from which a greater number of services could be provided from a wider range of clinicians, whilst recognising the difficulties of travel for patients in rural areas.
- LS outlined the history of previous attempts to secure a new building. Discussion then ensued on potential options for a suitable site for any new building, as temporary accommodation whilst rebuilding took place on the existing site is costly.
- It was noted that the recent limited extension of the Health Centre has removed the immediate pressure on accommodation, but the building cannot be further expanded because of the limitations of the available land and the fact that the CLASP construction precludes adding an extra floor. Thus its capacity is finite. It was noted that recent planning permissions for over 650 houses was likely to add a further 2000+ patients to the practice, excluding development in other neighbouring villages.
- LS stressed the importance that ELNP meets with the Practice, and suggested Dr Stephen Shortt (RCCG Clinical Lead). LS will forward Stephen Shortt's email address to facilitate CO arranging a meeting.
- LS will aim to provide a response to ELNP within the consultation period.

CCO
30/9/14



East Leake Medical Group

Tony Kelly Stephen Shortt Claudia Petillon Rahul Mohan Neil Fraser Imran Arshad
Associate GP: Oxana Iwanskyj
www.elmgroupsurgeries.co.uk

Conrad Oatey,
East Leake Neighbourhood Plan Group,
c/o Parish Office,
45 Main Street,
East Leake
Leics

22nd December 2014

Dear Mr Oatey

East Leake Neighbourhood Plan and East Leake Health Centre

I refer to our meeting of 2nd December, at which we discussed the likely suitability of East Leake Health Centre to meet the needs of the community during the Plan period (2013 - 2028).

As you are aware, various additions / modifications have been made to the facilities over the last few years. These were essential to address the overcrowding in waiting rooms and the shortage of clinical space for consultations / treatment. The facilities today meet the current demands. You will also be aware that these extensions have effectively used up all the space available around the old building, making it problematic to consider any further extensions. Also the old CLASP structure does not facilitate adding a 2nd storey to the building.

I understand that Rushcliffe Borough Council has already approved, over the last 18 months, around 750 houses in East Leake. Since most of the market housing on these sites are 4 or 5 bedroom houses, this could well increase the number of patients served by the Practice by around 2,500. It is likely, based on these numbers, that the current Health Centre accommodation will have reached saturation point once these houses are occupied, and we may well once again experience severe pressure on waiting room space and treatment / consultation rooms as we did a few years ago.

Overall, from a clinical perspective, I welcome the growth in housing in East Leake as it should provide, in conjunction with developers, a larger Health facility. There is pressure to move a number of clinics and treatment out of hospitals into the community, where they can be more effectively and economically delivered. This will only happen in larger centres which have the scale and capacity to accommodate them, such as West Bridgford and Bingham. If East Leake were to be able to grow to provide a south-west Rushcliffe centre, it would ease the challenges for patients without their own transport to reach alternative centres. However our current building will not be able to meet these needs.

Yours sincerely,

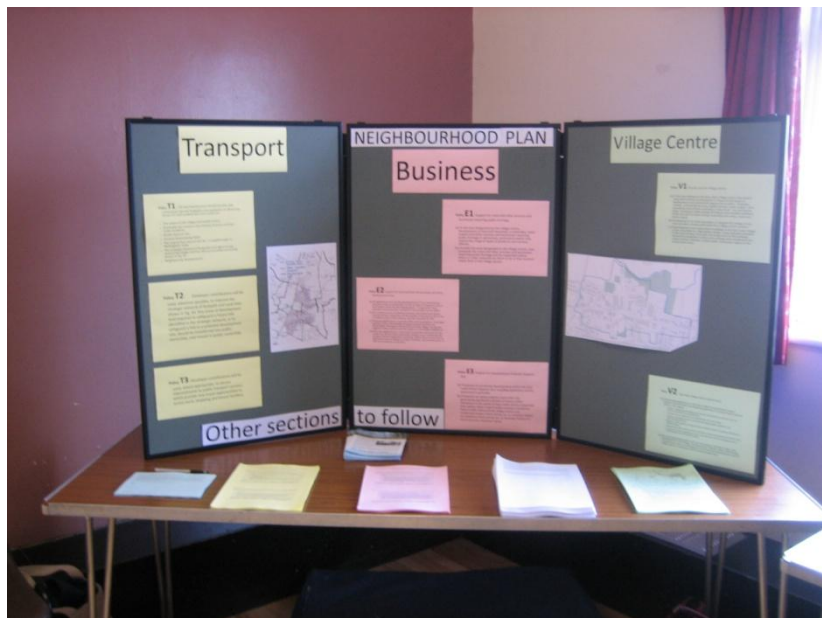
Dr S Shortt

The Health Centre, Gotham Road, East Leake, Leics LE12 6JG
Tel: 01509 852181 Fax: 01509 852099

6. Consultation on Draft Neighbourhood Plan

6.1 Initial drafts of sections on Employment, Transport, and the Village Centre

On 22 April 2014 three sections of the draft plan were approved by East Leake Parish Council, namely those on Employment and Business; Transport, Communications and Traffic, and the Village Centre. These three sections were taken to the Community Plan launch on 26 April 2014 (see 3.21 above) by means of a display board and handouts with project team members on hand to explain the material. All copies provided were taken away by residents, along with the consultation sheets.



Copies of the three sections were sent to British Gypsum and Weatherford.

The three sections were made available on the Parish Council website on 6 May 2014 and advertised on the website via newsflash lines.

Members of the East Leake business forum were alerted to the three sections consultation at their meeting on 8 May 2014 and subsequently via an email to the whole forum.

The same display was used at the East Leake Annual Parish Meeting on 21 May, advertised via the Parish Council newsletter delivered to all household, where further handouts and consultation sheets were distributed. 17 members of the public were present.

The responses and amendments are listed in the summary at the end of this section.

On 14 May 2014 representatives of the Neighbourhood Plan project team (CT and JL) met with the Sustainability Officer from British Gypsum for an informal pre consultation discussion about the first three sections. She subsequently sent a set of suggestions for changes to the sections which were considered and changes made as appropriate. She supplied the following supporting information about how the site is regulated and policies and procedures in place to manage noise and nuisance on site:

(a) In terms of noise and noise abatement. We are a Part A regulated installation. This means we are regulated by the Environment Agency in terms of environmental concerns – which includes noise. In order to operate our plant when applying for our permit, we had to undertake noise surveys to ensure that our operations would not cause a nuisance. This was carried prior to our permit being approved and we have had various further studies

completed since the permit was granted. The latest was reviewed by the local authority and the Environment agency earlier this year, in relation to concerns from a local resident. The local authority and the Environment agency were more than happy with the outcomes.

(b) In terms of new operations – if we were expanding or changing our operations we would have to consider the changes to any environmental impacts we were having, and these would most likely need Environment Agency or Local Authority approval. In order to manage our permits as well as our certified management systems, this could involve looking at the associated noise levels and various receptors in the local area, and what the differences to current levels could be.

I We have a number of internal procedures, related to management of change and nuisance to manage our environmental impacts, and encourage anyone with concerns to come and speak to us about them.

6.2 Approval by East Leake Parish Council

The first three sections were edited and the remaining sections of the draft plan were completed and were submitted as draft version 3.1 to a meeting of East Leake Parish Council on 24 June 2014 and approved. A modification was made in light of comments from one of the councillors.

6.3 Pre consultation Check by Key Stakeholders

A draft, version 4, was sent to the key stakeholders listed below on 21 July 2014 for comment by 29 August 2014. The purpose of circulating the draft to key stakeholders was to identify any major difficulties before finalizing the version to go out to public consultation. Responses received and amendments made are summarised in 6.5 below.

- Rushcliffe Borough Council
- Nottinghamshire County Council
- British Gypsum
- East Leake Community Plan Group
- East Leake Parish Council (formally approved on 24 August 2014)

Version 4 was also published on the Neighbourhood Plan Web page, with a note explaining its status.

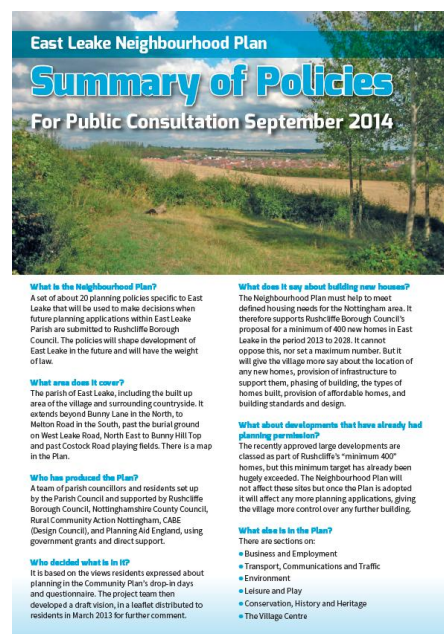
6.4 Pre Submission Public Consultation

The statutory pre submission public consultation on the Neighbourhood Plan, as required in Section 14 of the Neighbourhood Planning (General) Regulations 2012, ran from 15 Sept to 31 October 2014.

The consultation version of the Neighbourhood Plan, version 6, was published on the Neighbourhood Plan Website on 11 September 2014, with copies also on the Village Website (east-leake.co.uk) and the East Leake Online website (www.east-leake.com). Rushcliffe Borough Council carried a news item about the consultation on their Website from 16 September.

Over the weekend of 13 to 15 Sep 2014, an A4 colour leaflet explaining the Neighbourhood Plan, summarising its policies, pointing to web based materials, and containing a response slip, was distributed to all homes in the village, including accommodation for older people, and outlying homes and farms. A summary of the response slips is provided in Section 6.6. below.

Leaflets were distributed also to business addresses and retail outlets in the parish, with piles given to the larger employers (British Gypsum, Weatherford, Manor Farm) and the schools for distribution to staff. Piles of leaflets for the public (particularly those with an interest in East Leake but not residents) were placed at the following locations: churches, village hall, Health Centre, dentist, vet, cafés library, Parish office, Leisure Centre, Golf Club, Co-operative, Post Office.



Letters or emails were sent to the following organisations informing them of the publication of the consultation version and inviting comments. The responses received are provided in Appendix 8. Amendments made are documented in 6.5 below.

Councils, local authorities, etc:

Nottinghamshire County Council; Rushcliffe Borough Council; Leicestershire County Council; Charnwood Borough Council; neighbouring and close parish councils; Ken Clarke MP.

Utilities etc:

Virgin Media; BT; Mono consultants Ltd; Severn Trent; Trent Valley Internal Drainage Board, Carillion; National Grid (ENTEC); covers both gas and strategic electricity; Western Power Distribution (turley Associates)

Education and Young People:

Three local primary schools (i.e. including Costock) and East Leake Academy; local scout and guide groups; Youth Parish Council

Heath and Sport:

Rushcliffe Care Quality Commissioning Group; East Leake Health Centre NHS Midlands and East; Sport England; Carillion;

Housing related:

Homes and Communities Agency; Landowners and Agents for current housing sites; Metropolitan; Waterloo; Derwent Living; Friendship care and housing; ASRA; Accent Nene; Anchor; Nottingham community housing association; Places for people; emh homes; two estate agents with offices in the village; developers with planning applications in progress

Landowners affected by policies on Areas of Separation and Local Green Spaces.

Environment related:

Natural England The Environment Agency; English Heritage; Woodland Trust; CPRE, RCAN; Notts Wildlife Trust

Transport related:

East Midlands Airport; Network Rail Infrastructure Limited; The Highways Agency; Sustrans; Nottingham City Transport; NET; Ramblers; Great Central Railway

Business/Employment related:

British Gypsum; Weatherford; Manor Farm; Microprop; Cemex; The Co-operative; landlords of local shops; Stanford Hall developers; D2N2; East Leake Business Forum; East Leake Traders Association

Local Organisations:

East Leake Community Plan Action Group; Neighbourhood Watch; Five local churches; Rushcliffe CSV; East Leake Community Care; Police Station; Tutin Court, Thurman Lodge, Derbyshire House (provision for older people); East Leake Playing Fields Association; Allotments Association; Golf Club; Townlands Trust; Friends of Meadow Park; History Society; Bowls Club;

A press release was produced and distributed on 26 September to the Loughborough Echo; Nottingham Evening Post; Local television and radio; East Leake Times. The Loughborough Echo ran a series of features on the Plan.

Posters were produced and distributed around the village on notice boards and shop windows.

Drop in sessions were held in the Parish Office on Friday 26 September from 14:00 to 20:00, and Saturday 27 September from 09:00 to 14:00, with refreshments kindly donated by The Co-operative.

Policies and maps were displayed and other materials made available, with members of the project team available to answer questions and take comments. These sessions were advertised widely (via the leaflets, posters, emails and letters listed above and in the Loughborough Echo). On the day the event was further advertised by means of a sandwich board. A total of 31 people attended.



East Leake Neighbourhood Plan
Summary of Policies
For Public Consultation September 2014

***HAVE YOUR SAY ON
EAST LEAKE'S FUTURE***

RETURN THE RESPONSE SLIP IN THE
LEAFLET, OR TALK TO THE PROJECT TEAM.

Drop-in sessions
EAST LEAKE PARISH COUNCIL OFFICE
Friday 26 September 2pm to 8pm
Saturday 27 September 9am to 2pm



6.5 Summary of Consultation Responses and Amendments made

Note that initial drafts sections, references in **red type** here, were renumbered in Version 2.

Date	Method/stakeholder	Policy/ Section	Comments	Action Taken
Responses to initial consultations, prior to formal pre submission consultation period				
25-Mar-14	Parish Council Meeting	3.8	3.8.1 agreed 3.8.2 rejected	3.8.2 edited to remove indicative scheme for village centre.
22-Apr-14	Parish Council meeting	3.2, 3.3, 3.8	Various factual corrections/rewording	Drafts (including revised 3.8.2) approved by Parish Council. Edited.
26-Apr-14	Community Plan launch event, verbal – resident	3.2 , B3	Concern from resident in Angrave rd area about additional noise from any development of British Gypsum site	Wording included in Ver2 to ensure this is considered. Details of noise management measures provided by British Gypsum and included in Statement of Consultation
26-Apr-14	Community Plan launch event, verbal – resident	3.8 , V2	Misunderstanding of term “waiting vehicles”.	Changed in Ver2
26-Apr-14	Community Plan launch event, form left – resident	T1, T2, T3	Strong agreement with T1, T2, T3 Request for crossing near “The Offy”	Added to 9.1.12 in Ver2
26-Apr-14	Community Plan launch event, form left – anon	B1, B2, B3, V1, V2	Strong agreement with E1, E2, E3, V1, V2.	None required
Apr-14	Planning Aid England Advisers	3.2, 3.3, 3.8	Various suggestions for rewording etc	Changes made in Ver2
8-May-14	Resident of Main Street	3.8	Question – why is part of his garden coloured green on the village centre map?	Advised that this is on the OS map and how to contact them.
12-May-14	NP project team member	3.1.5, H4	Suggestions to further address housing mix in the market sector	Changes made in Ver2
12-May-14	BfL12 Workshop	2.5.8, H6	Increase comments about housing design	Changes made in Ver3
14-May-14	British Gypsum – pre consultation meeting with Sustainability leader, and	Various	Various comments, mainly relating to the Employment and transport sections	Changes made in Ver2 Noise management comments included in Statement of Consultation

	subsequent email			
31-May-14	Resident	3.1, 9.1, 9.2	Parking capacity in village centre – suggesting multi story	Reviewed text and added supporting statements in Ver3
4-Jun-14	NP Project meeting	Various	Section by section discussion, see minutes	Changes made in Ver3.
24-Jun-14	East Leake Parish Council	All	Approved, with comments from one councillor	Changes made in Ver 3 – addition of 2.1.10
18-Jul-14	Planning Aid England advisors (under direct support element of grant)	Various	Suggestions on various sections of the plan	Some changes made in “pre consultation check” version (version 4), others held over to be dealt with alongside comments from key stakeholders and after further research.
26-Aug-14	Parish Council Meeting	All	Version 4 sign off before consultation	Approved
30-Aug-14	Community Plan Group	Various	Personal suggestions from two members of Community Plan Group	Changes made as appropriate in consultation version (V6).
2-Sep-14	Rushcliffe Borough Council	Various	Advice and comments on several policies	Changes made as appropriate in consultation version (V6).
5-Sep-14	British Gypsum	Various	Suggestions and additions	Changes made as appropriate in consultation version (V6).
<i>The responses below are from the pre-submission consultation with stakeholders and organisations. The responses themselves are in Appendix 8. (Residents’ responses to the pre submission consultation are summarised in section 6.6 below.)</i>				
17-Sep-14	Evangelical Church		Desire for own premises in village centre	Amendment to 8.1.5
26-Sep-14	Sport England	6	General advice	No changes needed
29-Sep-14	Rushcliffe Nature Conservation Implementation Group	5.2	Suggestions re promoting more diverse flora in Meadow Park and Townlands Trust fields, and for the Cemex site and St Peter’s churchyard	Amendments to 5.2
30-Sep-14	Town Lands Trust	E1,E3	Agreement as landowners to areas of separation and local green spaces	No changes needed
6-Oct-14	Neighbourhood Watch	Various	Comments are largely in support of policies in the plan, or not related to planning so cannot be included.	H1/2 – Comments about phasing support H1. H7 – farmland used for building – 2.6.8a added re E1 – Protection of ridges can’t be applied retrospectively to Woodgate site. E4 – The next two fields behind Potters Lane were considered, but “local green space” designation can’t be used too extensively

6-Oct-14	Rushcliffe CCG	H1	H1's aim for adequate infrastructure is consistent with CCG's priorities. NHS and EL Medical Group are responsible for Health Centre	Separately consulted NHS and East Leake Medical Group.
13-Oct-14	Notts County Council	4	Add detail re bus stops NCC wish to liaise with developers re funding for public transport NCC will not prioritise enhancement of evening service Mention community transport Sheep Plank lane improvement should be in keeping with its rural character Legal status of new paths	Added at 4.1.5 Noted and applauded. Noted with regret. 4.2.2a added Added at 4.1.9 Addition to 4.1.7, policies T1 and T2
14-Oct-14	Natural England	5	Importance of Golf Course SSI and need to protect it Use term "green infrastructure" in E2. Show SSSI in fig 5.2	Addition at 5.2.5. Note also additional protection afforded by northern area of separation. Amended Figure amended
15-Oct-14	Cemex	3.7	Further comment about restoration of quarry site	Additions at 3.7.9 and 5.2.5
15-Oct-14	Community Plan Group	Various	Comments are largely in support of policies in the plan, or not related to planning so cannot be included.	No changes needed
16-Oct-14	Landowner	5	Concern about land included in area of separation	Policy to be considered when the NP is reviewed every 4-5 years. Noted in 1.7 and 5.1.4
24-Oct-14	Nottinghamshire Wildlife Trust	5	Replace "Biological site of Importance" with "Local Wildlife Site"; remove "designated" in E2(a) Bird and bat boxes needed in existing buildings as well as new build, plus wildlife friendly practices in gardens. Use planning conditions to protect and enhance wildlife Potential at Lings farm	Changed in E2 and Fig 5.2/1, and footnote added Agree but not a planning issue for inclusion in the NP The same effect is achieved by E2(b) Additions at 3.7.9 and 5.2.5

24-Oct-14	NHS England	H1	Response provides information about investment in Health Care premises.	No changes needed to NP
27-Oct-14	Environment Agency	H1, H7	Support for various aspects of the plan. Advice on surface water drainage schemes for new developments	No changes needed Dealt with by Rushcliffe Borough Council planning
28-Oct-14	East Midlands Airport	T3	Importance of EMA as employment site for East Leake residents, and need for public transport link	No change required. 4.2.4 already refers to EMA as a destination for improved transport links and policy T3 refers to new travel opportunities to access work.
30-Oct-14	British Gypsum	n/a	Advice on mapping. (British Gypsum provided considerable input at earlier drafting stages.)	No changes required.
30-Oct-14	Ramblers	B2(d)	Need to protect rights of way when considering rural business development	Addition to B2(d) and 3.2.5
31-Oct-14	Rushcliffe Borough Council	2.1.3 2.1.5 2.1.8 and H1 2.1.24 H3 H4 H7 B1, 9.2 B2 4.1 E2 5.2.6	Show sources Updated version of IDP available RBC concerns about conformity with NPPF and CIL regulations Meaning of “hd” Need for review of numbers as new data becomes available Local connections policy – RBC issues Suggestions for clarity Use class order is subject to change RBC unsure what B2(a) and (b) will achieve Impact of foot/cycle path improvements on conservation area Suggestions about planting and species Consideration of rare species Clarity and evidence re rural heritage	Covered in 2.1.13 to 2.1.25 – footnote added. EX35 already referenced in 2.1.5 H1 amended. Heads per day, confirmed Added at 2.3.8a. Also applies to other policies and to the plan in general – see para 1.7 H3 amended in light of consultant report H4 amended Reworded Note added in 9.2 Deleted, and intent included in 2.3.8b Addition made to T2. Not required in T1 it relates to new developments which would not impact on the historic centre. Section and policy amended. Protected by existing policies outwith the NP Addition made at 5.2.6. Two ridge and furrow sites are protected as local green spaces, see policy E4

		<p>L1</p> <p>7.1.3</p> <p>V2</p> <p>General</p> <p>2.5.8</p> <p>All</p>	<p>Add references to RBC's formulae for developer contributions and leisure standards</p> <p>Wording re development in conservation area</p> <p>List of potential improvements would be beneficial</p> <p>Nothing about recycling</p> <p>Nothing about energy efficiency</p> <p>Insufficient consideration of heritage</p>	<p>and supporting document, "Assessment of Areas Identified as Local Green Space".</p> <p>Added at 6.1.16</p> <p>Replace "enhance" with "preserve or enhance" in 7.1.3</p> <p>The objectives are listed in 8.2.10 to 8.2.15 and the bullet points in V2(a). A specific scheme, to meet these objectives, will be drawn up in future as noted in 8.2.2.</p> <p>Current provision is adequate.</p> <p>Added at 2.5.8</p> <p>Covered by section 7 which recognises the existing conservation area and its management plan as the key tool to ensure heritage is protected. This is overdue to be reviewed and we look forward to working with RBC to do this. Extension of the conservation area, to protect additional character areas, can be considered as part of the review. Additionally there are references throughout the document, including rural and agricultural heritage which is covered in section 5.2 and in policy E4. Policies E3 and E4 cover green spaces within the conservation area.</p>
31-Oct-14	A Borough Councillor	<p>H2</p> <p>H3</p> <p>H5</p> <p>H7</p>	<p>Will NP have more say that RBC Planning Committee?</p> <p>Already have a good mix of housing.</p> <p>RBC already has conditions they can apply to reduce aircraft noise in new build.</p> <p>British Gypsum does not mine under buildings</p>	<p>NP contains policies additional to RBC ones. RBC remains responsible for determining planning applications</p> <p>For evidence of housing mix needed going forward, see consultant report.</p> <p>H5 ensures it is always considered for new build in East Leake.</p> <p>H7 additionally prevents building over mined areas or deposits required for future mining</p>

		B3 T1	There is a n existing weight limit in East Leake Cut throughs are not popular, particularly with the police	Wording of B3 amended to make this clearer Such connections, using well designed, lit paths that are overlooked by housing for safety, are recommended by Building for Life Standard. The police were invited to respond to the consultation.
		T2 V1/V2	Are ransom strips a private matter between developers and land owners? Concern about removal of central reservation	The policy prevents creation of future ransom strips, rather than affecting existing ones. No detail of a future t-junction scheme is included in the NP. This is for future decision, including the fate of the central reservation. The indicative scheme in an earlier draft of the NP has been removed.
31-Oct-14	East Leake Pre-School Playgroup	3.2 4 5 6.1	May use facilities provided for small business Importance of footpaths and crossings. Importance of green spaces Under 5s play area	Addition at 3.2.3 Noted. Noted Addition to 6.1.5
31-Oct-14	Iplan solutions on behalf of a landowner (para numbers in comments column are from the iplan response)	General 2 2.1.8 H1(b) 2.1.17 H2 H3	1.2 Validity of consultation 2.1 Definition of housing targeted at well off families 2.2 release of 57greenfield sites H1 should apply to all sites, not just green field 2.4-7 Policy too inflexible 2.8 Clarity re previous planning application for replacement Health Centre in East Leake 2.10 Define larger sites 2.11 Housing trajectory is at best an estimate 2.12 Prescriptive mix is simplistic 2.12 Mix should be across all tenure types	Complies with regulations for NPs Detached 4 and 5 bedroom houses – footnote added NP does not rule this out – deals with criteria for prioritising sites 2.1.8 edited H1 amended Reference added to Planning application 02/01378/OUT Added – 50 or more homes The trajectory is to ensure initial and ongoing dialogue with the planning authority about delivery rates. 2.2.5 gives further explanation. The wording “broadly reflects” allows for variation where it can be demonstrated to be necessary H3 amended in light of additional consultant

		H4, 2.4.9 H7, 2.6.2, 2.6.12	2.13 Cascade mechanism should ultimately cascade to unfettered residency 2.15, 2.16 walking distance criterion is inflexible	report and covers the affordable element H4 withdrawn after discussion with RBC. Flexibility already introduced by applying the walking distance to “most homes” on a site rather than all. 2.6.4 allows further flex by ensuring that this distance is reviewed regularly to allow the village to grow outwards. Importance is separation from West Leake at the edge of East Leake Parish. 5.1.4 provides for moving the protection further out from East Leake in the future. “Most curious” sentence removed. Map redrawn
		E1, 5.14, 5.15, fig 5.1/2	2.18 Importance of western area of separation 2.19 SHLAA sites in area of separation 2.20, 2.21 Eastern boundary does not use physical features 2.22 Railway line as a boundary	No change made – the railway line is a clearly defined physical boundary and a Site of Importance for Nature Conservation forming a border with open countryside along much of its length.
31-Oct-14	BS Stanford Ltd	Various	Comments in support	No changes needed
31-Oct-14	Landowner	5.1/E1	Concern about land included in area of separation More detailed map needed	Policy to be considered when the NP is reviewed every 4-5 years. Noted in 1.7 and 5.1.4 Map replaced and text added at 5.1.4 to cover any buildings not shown on map
1-Nov-14	Consultation – residents’ response slips	All	See report in section 6.6	Various changes made
Amendments made after the pre submission consultation stage				
16-Dec-14	NPIERS Health Check	1.7	Recommendation 1 – make statutory consultation processes clearer	Paragraph added about pre submission consultation
16-Dec-14	NPIERS Health Check		Recommendation 2 – publish project plan with RBC for stages through to adoption	Ongoing. No changes to NP needed.
16-Dec-14	NPIERS Health Check		Recommendation 3, 4, 6 – additions to basic	Covered in redraft of basic conditions statement

			conditions statement	
16-Dec-14	NPIERS Health Check	2.4	Recommendation 5 – amend policy H4 following discussions with RBC	Footnote added to 2.4.6 re NPPG 28 November about the threshold for affordable housing Policy withdrawn after discussion with RBC
16-Dec-14	NPIERS Health Check	3.3.9	Recommendation 7 – NCC to confirm conformity with minerals plan.	NCC contacted and provided confirmation for the Basic Conditions. Amendment made about duration of sand and gravel quarry.
16-Dec-14	NPIERS Health Check	2.2	Recommendation 8 – provide list and map of housing consents to date	Provided in separate document on NP web page and referred to in the NP
16-Dec-14	NPIERS Health Check	3.3 F 2.6/2 F7.1/1	Recommendation 9 – typographical/mapping	Section 3.3 paragraph numbers corrected Fig 2.6/2 – map not amended (Environment agency standard colours) but key improved and note added to refer to online version if unclear on printed copies Fig 7.1/1 map of conservation area added and link to original.
17-Dec-14	Highways agency		Late consultation response. Concern about cumulative impacts on A52, but unlikely to affect development proposals in East Leake.	No change needed
13-Jan-15	East Leake Parish Council		Formal approval with minor typographical changes	

6.6 Summary of Response Slips Received from Individuals on the Pre Submission Consultation Version

The response slip can be seen at:

<http://www.east-leake.gov.uk/docs/east%20leake%20consultation%20response%202.pdf>

A total of 123 forms were received, three of which were from organisations/stakeholders and are dealt with in the section above. The remaining 120 are taken to be from individuals. Most are probably residents, but the consultation leaflet was made available more widely to people who work in East Leake and use the facilities. The table gives numbers and percentages of responses indicating support (yes), or opposition (no) overall and to the individual policies. Some respondents ticked neither agree nor disagree. The “overall” question asked if residents would support the plan in a referendum as it stands; in addition to the “yes”, “no” and “blank” options, for this question there was also an option “I probably wouldn’t vote”.

The responses shows 77% support for the Neighbourhood Plan overall with many comments of agreement, praise and thanks. From the comments it is clear that most of the opposition is from people protesting against the current level of housing development and wanting the Neighbourhood Plan to limit this in future (which it is unable to do). There are also negative comments from people who for one reason or another think the exercise is a waste of time. The issue causing most comment is the provision of village infrastructure to support the additional housing.

Support for individual policies ranges from 72% for policy B3 to 93% for policy E1 as shown in the table below.

	Yes	No	Not ticked	Won't vote		% yes	% no	% blank	% won't vote
Overall	92	16	3	9	120	77	13	3	8
H1	89	24	7		120	74	20	6	
H2	95	19	6		120	79	16	5	
H3	99	15	6		120	83	13	5	
H4	102	12	6		120	85	10	5	
H5	87	21	12		120	73	18	10	
H6	99	9	12		120	83	8	10	
H7	97	17	6		120	81	14	5	
B1	107	7	6		120	89	6	5	
B2	109	6	5		120	91	5	4	
B3	86	26	8		120	72	22	7	
T1	97	12	11		120	81	10	9	
T2	107	7	6		120	89	6	5	
T3	107	6	7		120	89	5	6	
E1	112	3	5		120	93	3	4	
E2	110	5	5		120	92	4	4	
E3	104	7	9		120	87	6	8	
E4	108	5	7		120	90	4	6	
L1	106	9	5		120	88	8	4	
L2	104	6	10		120	87	5	8	
V1	107	1	12		120	89	1	10	
V2	106	9	5		120	88	8	4	

<i>Times mentioned</i>	<i>Subject of Comment</i>	<i>Action taken</i>
General Comments		
48	Support for the plan including thanks and praise	No response needed
30	Negative towards plan, including: plan not achievable; needs more thought; won't happen; won't make a difference; not specific enough; heard it all before; cost of producing or implementing the plan; developers won't comply; RBC will ignore it; NP is too late; consultation fatigue; Parish Council would have no say on new sites	Give further explanation etc in the final newsletter
30	Negative towards housing development in general, including: village is getting too big; too many houses approved already; no max no of homes specified; EL is becoming a town not a village; houses should be built elsewhere; too much development/too soon	Give further explanation etc in the final newsletter
H1 – infrastructure		
4	Comments in support	No response needed
46	Concerns about infrastructure, including health centre, primary schools, sewage, flooding	Give further explanation of policy H1 in the final newsletter, and expand the evidence in this section. Include comments about flooding. Provide flooding photo gallery in evidence base.
2	Question/concerns about secondary school places	Not currently a problem. Para 2.1.9a added.
2	Health Centre concerns are not just about the building: more doctors are needed; staff are under pressure	Not a matter than can be addressed by the NP
H2 – Phasing		
	Comments under this policy have been counted in comments “negative towards housing development in general” above as they could not easily be unpicked from these views.	
H3 – Market Housing Mix		
19	Comments in support	No response needed
4	Disagree: too much diversity may undermine community; need more upmarket homes; policy too loose; already enough smaller houses	Noted
8	Bungalows, homes for older people to downsize are needed	H3 being amended in line with consultant's report
1	Stop bungalows being converted into houses by loft conversions	Point was noted and discussed by project team, but it was not thought possible or desirable to include a policy to this effect
H4 – Local priority for affordable		
8	Comments in support	No response needed
3	Disagree with H4; there should not be priority for local connection	Policy withdrawn after discussion with RBC

9	Various concerns about social housing/tenants	Not a matter than can be addressed by the NP
2	Issues with part ownership options	Not a matter than can be addressed by the NP
2	There is not enough social housing	Noted, but the NP must be in line with the RBC emerging core strategy on this.
1	Affordable homes should not be hidden from view	2.5.8a added
H5 – Aircraft Noise		
3	Comments in support	No response needed
10	I don't mind the aircraft; you get used to it; aircraft are getting quieter; it's not a priority; measures exist already; it's not a matter for the NP; the airport was here before houses built	Noted
15	Help is needed for existing homes, not just new ones; dialogue with EMA; change the flight path; vary the routes; grants to upgrade windows	} Not matters than can be addressed by the NP } Comments noted and passed on to EMA
7	Comments showing concern about night flying in particular	}
3	Comments about ongoing expansion of East Midlands Airport	}
H6 – Good Design		
5	Comments in support	No response needed
2	Negative towards H6 - good design/quality works against affordability; is not a priority; it already happens	Noted
4	New homes should be more eco friendly; solar panels; heat insulation	Added into 2.5.8
2	There should be sufficient parking spaces in new developments so no blocking of roads and pavements	Added into 2.5.8
1	Should there be a policy on height of new buildings?	Already covered by RBC policies
1	Aim beyond national standards	Added into 2.5.8
H7 – Suitability of Sites		
9	Comments in support	No response needed
6	Negative towards building on green field sites and agricultural land; promoting brown field sites first; allows village to grow outwards	Para 2.6.8a added
B1 – Shops etc clustered in village centre		
11	Comments in support	No response needed
5	More competition/choice is needed (shops)	Noted, and policy V1 assists with this
2	There is a good selection of shops already	Noted
6	There are too many hairdressers/takeaways/coffee shops; carpet and photo shops not needed	Noted. Policy B1(a) does limit additional takeaways.
6	Specific shops desired:	Noted

	3*bank; clothes; gents barber; “proper shops like the village had 40 years ago”; pub with decent food	
1	More shops needed in outer residential areas	Already allowed for in policy B1(b)
6	There is no room in village centre for more shops or services	Noted, but policy V1 assists
1	Use existing premises before building new	Noted
B2- Small Business		
3	Comments in support	No response needed
2	Against the policy: only some businesses are suitable for basing at home; businesses should not need support	Noted
B3 – British Gypsum Site		
1	Comments in support	No response needed
11	BG is big enough; already causes problems (various mentioned); doesn’t benefit village; should contribute more to village; policy not needed	Noted and comments passed on to British Gypsum
Transport in General		
21	Various concerns about traffic, including speeding; more speed check signs needed; cyclists using footpaths; heavy traffic through village; road safety in general; horses on roads creating both traffic hazard and faeces problem; traffic wardens needed	Not matters than can be addressed by the NP
28	Parking concerns/suggestions/enforcement/yellow lines	Not matters than can be addressed by the NP, but a working group of the Parish Council is addressing parking
11	Pedestrian crossings needed (various locations)	Not a matter than can be addressed by the NP
1	Connect to tram network via railway	Not a matter than can be addressed by the NP
T1 – Connectivity of new developments		
7	Comments in support	No response needed
3	Connectivity impossible to achieve or undesirable	Noted
T2 – Footpaths and Cyclepaths		
5	Comments in support	No response needed
1	Policy not supported/not a priority	Noted
7	Existing network need improvement: better maintenance; more bridleways with easy to access gates; more cycle routes; lighting; signage	Already covered, but specifics added to 4.1.6 and 4.1.9
2	Road network is unsuitable for creating footpaths	Noted
1	Heavy traffic damages footpaths	Noted
3	More definite footpath suggestions needed in the NP; specific suggestions for footpaths, including EL to West Leake, co-op car park to health centre car park,	4.1.9 partly gives priorities. For the Parish Council to take forward on ongoing basis.

	along Gotham Road and across rail bridge by British Gypsum	
1	Creating foot and cycle paths would take away more green land	Noted
T3 – Public Transport		
2	Comments in support	No response needed
24	Adverse comments about existing public transport including: late buses on No1; buses unreliable; improved routes needed; demise of 63; future of No 1 when trams start; generally inadequate; too expensive	Concerns noted. Already covered by section 4.2 and policy T3
1	Will public transport be used?	Noted
E1 – Built Environment		
17	Comments in support	No response needed
1	Extend green ridge to South of Potters Lane	Unclear what is meant
E2 – Wildlife and Rural Heritage		
10	Comments in support	No response needed
1	No bat boxes near houses due to danger of disease	Currently not regarded as a major threat, but to be kept under review.
E3 – Green spaces in housing developments		
8	Comments in support	No response needed
4	Concern about upkeep of green spaces in housing estates/local green spaces, both existing ones and as a reason for not creating new areas	Not a matter than can be addressed by the NP
1	Green spaces in estates/Local Green Spaces – disagree because the countryside is being destroyed by building	Noted
E4 – Local Green Spaces		
10	Comments in support	No response needed
3	Add protection for various areas including: Osier beds along Sheep Plank Lane; Costock Road Playing Fields; additional fields behind Potters Lane, up to footpath up from Burton Walk	Importance of osier beds noted in 5.2.5 Playing Fields have other protection Next two fields behind Potters Lane were considered, but “local green space” designation can’t be used too extensively
1	Convert quarry when finished into nature park	Additions at 3.7.9 and 5.2.5
1	Ridge and furrow were not protected when developers compounds were erected on them on Gotham rd	Noted
L1 – Play facilities		
13	Comments in support	No response needed
7	Suggestions for additions, including: teenage exercise equipment (fixed bike and	Passed to Parish Council playground working party

	walking machine); BMX circuit and trim trail; fenced off play areas for younger children; better gates; small steps on slides; no of swings (too many, right number); make it more like Rushcliffe Country Park or West Bridgford; seating; bins; lighting	
3	Play equipment needed in new developments and green spaces in existing housing areas; preference for multiple smaller play areas	Noted
3	Play facilities not a priority/ no improvement needed/ would make litter problem worse	Noted
6	Concerns about skatepark	Repairs are being addressed by Parish Council
1	Importance of leisure centre	Noted
1	Obtain funding from “football city”	Noted
4	Improvement to Costock Road playing fields needed	Funding for this is being allocated by developers. Parking provision is being met by one of the developments.
L2 – Allotments		
4	Comments in support	No response needed
3	Not needed; lower priority than other green spaces; protect existing but no more needed.	Noted
Section 7 – Conservation		
1	Importance of conservation area/extending it	Noted
V1 – Priorities for Village Centre		
4	Comments in support	No response needed
7	Appearance needs to be improved – shop fronts, dirty, scruffy etc	Policy V1(b) covers this for any new developments. It is not possible to include measures in the NP to deal with maintenance issues in existing properties.
1	Not a matter for the NP	Noted
V2 – Gotham Rd T junction improvements		
15	Comments in support	No response needed
8	Traffic lights (including part time ones) ,roundabout, or speed restrictions needed at and around t-junction	Noted. The policy sets out the objectives for a future scheme – the details to be decided later.
1	Improvements not needed	Noted.
1	t-junction area difficult to navigate with pram or wheel chair	Noted
1	Shop owners rely on being visible to through traffic and should be consulted on any plans for changes to t-junction area	Consultation with retailers added into 8.2.12
Comments not related to policy areas in the plan		

6	Drug abuse/vandalism/anti social behaviour/litter and lack of police presence	Not matters that can be addressed by the plan
3	Complaints about street lighting going off at night	Include advice in final newsletter
1	Signage/planters to create entrance to village	Noted
1	Set up resident/council committees to work with developers	Parish Council will work with residents if requested
1	Better public convenience facilities	Recently renovated.
1	More cash machines needed	Not a matter that can be addressed by the plan
1	Enforce restrictions, e.g. noise from pubs	"
1	Baby facilities/groups	"
1	ACF, air cadets etc to set up detachments in the village	"
4	Provision for teenagers	"
2	Council tax is spent on Rushcliffe parks not East Leake	"
2	Complaints about sweeping roads and paths/road surfaces	"
1	Community building for retired people needed	Not something the NP can address but policy V1 could be helpful here in the future.
1	Parish Council to adopt responsibility for Sheepwash brook from Main St to Meadow Park	Referred to Parish Council Amenities Committee
1	Support for Stanford Hall rehabilitation centre	Noted
1	BT infinity for all	Noted
1	Should we be discouraging residents from tarmacing drives?	Other regulations apply, so additional policy in NP not needed
1	More festivals/entertainment needed	Not a matter that can be addressed by the plan
1	Car park next to the rest garden in a health hazard	Referred to Traders Association and Parish Council

Appendix 1 - Abbreviations used in this document

CABE	Commission for Architecture and the Built Environment (Now part of the Design Council)
EL	East Leake
ELCPG	East Leake Community Plan Group
ELPC	East Leake Parish Council
ELNPPT	East Leake Neighbourhood Plan Project team
NCC	Nottinghamshire County Council
NP	Neighbourhood Plan
RBC	Rushcliffe Borough Council
RCAN	Rural Community Action Nottinghamshire

Appendix 2 – Timeline

Colour key for activities by various groups:

ELPC	RBC	ELCPG	ELCPPT		Other/multi agency
------	-----	-------	--------	--	--------------------

Date	Activity	Documents etc
Jul-04	Publication of EL Parish Plan	2004 Parish Plan – ELPC website
May-09	Questionnaire survey undertaken by ELPC in preparation for updating Parish Plan	Summary analysis
22-Mar-11	RBC consultation “Fresh Approach” – Initial East Leake meeting	RBC website
9-Jun-11	RBC consultation “Fresh Approach” – Visioning Workshop	RBC website
18-Jun-11	RBC consultation “Fresh Approach” – Public Event	RBC website
6-Jul-11	Meeting – 3 councillors and clerk with Carola Jones of RCAN about updating the Parish Plan	Report to council
8-Jul-11	Letter from Neal Wright to RBC – seeking to set up “East Leake Community Planning Group”	Letter
14-Jul-11	RBC consultation “Fresh Approach” – Feedback Session	RBC website
Aug-11	ELPC Newsletter article – “Your Village, Your Plan”	
16-Aug-11	Meeting (3 councillors, clerk) – planning for publicity for Public meeting re East Leake Plan: stall at Village Show, letters to stakeholders, posters, article in Loughborough Echo, item on village website, invitations to local groups, etc	Notes
17-18 Sep	Flyers handed out outside Co-op to advertise public meeting	
21-Sep-11	East Leake Plan Public Kick Off Meeting, 25 attendees. Speakers: Karen Tarburton (RCAN); Tony Jarrow (Cropwell Bishop Parish Plan Group)	Agenda, Report
13-Oct-11	First meeting of ELCPG	Minutes
18-Oct-11	Meeting of a subgroup of ELCPG re Neighbourhood Plan (later called Housing and Planning Sub Group of ELCPG)	Notes
3-Nov-11	Letter from RBC to ELPC allocating min 400 houses to East Leake	Letter
Nov-11	ELPC newsletter article – “The East Leake Community Plan”	
9-Nov-11	Meeting of ELCPG	Minutes
10-Nov-11	Meeting of group of ELPC councillors with Keyworth NP Group	
15-Nov-11	Localism Bill passed	
22-Nov-11	ELPC Nov Full council – agenda item re Local Development Framework and Neighbourhood Plans	Minutes
29-Nov-11	Meeting of Housing and Planning subgroup of ELCPG	Report
29-Nov-11	RBC cabinet meet to discuss housing nos (min 400 houses for EL)	Minutes
8-Dec-11	Design Council confirm 4 days of support available (to group now working as housing and planning group of ELCPG)	
14-Dec-11	Meeting of ELCPG	Minutes
15-Dec-11	RBC approval of draft Core Strategy at Council meeting (min 400 houses for EL).	Minutes
3-Jan-12	ELPC meeting with Cllr Neil Clarke (Leader of RBC) and Paul Randal (Deputy Chief Executive) re core strategy	Minutes
18-Jan-12	Meeting of ELCPG	Minutes
1-Feb-12	Initial meeting with Andy Beard (CABE facilitator) to plan workshops	
31-Jan-12	ELPC NP Steering Group meeting	
Feb-12	ELPC Newsletter article – PLANS, PLANS, PLANS!!	
10-Feb-12	Draft content and dates finalised for 2 CABE workshops	
15-Feb-12	Meeting of ELCPG	Minutes
29-Feb-12	Invitations to first two workshops initiated – to ELPC, ELCPG, RBC planning officers, NCC – councillor and officers.	Email

6-Mar-12	Meeting with Andy Beard (CT/CO) to finalise arrangements for workshops	
7-Mar-12	Meeting of ELPC NP Steering Group including first draft of infrastructure requirements by PW. Robert Keith of Planning Aid attended and gave presentation on Neighbourhood Planning	PPT of presentation Meeting Minutes
9 and 10-Mar-12	ELCPG drop-in days for residents etc in the Village Hall	Flyers, photos, summaries of comments
11-Mar-12	Workshop invitations sent to 6 residents who had expressed an interest at the drop-in day	Email
24-Mar-12	First CABA workshop – Strengthening the heart of East Leake (photographer in attendance)	Course materials etc
28-Mar-12	Meeting of ELCPG	Minutes
Apr-12	ELPC Newsletter Articles – Local Development Framework, Community Planning Group	
25 Apr-12	Meeting of ELCPG	Minutes
28-Apr-12	Second CABA workshop – Creating well-designed housing and joining it all up for East Leake	Course materials etc
1-May-12	Design Council event to bring projects together, PT attended on behalf of ELCPG Housing and Planning group	
23-May-12	Presentation by ELCPG at Annual parish meeting and community forum	
28-May-12	Meeting of ELCPG	Minutes
18-Jun-12	Meeting of ELCPG	Minutes
3 Jul-12	Third CABA Workshop – Vision	Draft vision, course materials
25-Jul-12	Fourth CABA Workshop – Project Plan	Draft project plan, course materials
Aug-12	ELPC Newsletter articles – Planning the East Leake YOU want, Have YOUR Say, Exhibiting the Future	
13-Aug-12	Meeting of ELCPG	Minutes
21-Aug-12	ELPC Planning meeting - Draft Terms of Reference for ELNPPT considered and referred to Full council	
24-Aug-12	ELCPG questionnaire printed and distribution to every household starts, completed by about 6 Sep, with initial return date of 14 Sept. Online version also available. Deadline extended to 30 Sept, with follow-up reminder slips delivered to some areas of village	
28-Aug-12	ELPC Full council agree ToR for ELPC Neighbourhood Plan Project team (ELNPPT), and that the Neighbourhood area be registered with RBC	
14-Sep-12	ELPC request to RBC for designation of Neighbourhood Area	
19-Sep-12	Meeting of ELCPG	Minutes
24-Sep-12	Initial meeting – Neil Bettison, NCC re his membership of ELCPPT	
30-Sep-12	Final deadline for return of ELCPG questionnaires	
10-Oct-12	Meeting of ELCPG	Minutes
11-Oct-12	First meeting of ELNPPT	Minutes
19-Oct-12	Draft vision sent to EL History Society for comment	
30-Oct-12	Consultation meeting with Gotham Parish Council, followed by an article in the November issue of Gotham News about the draft vision	Minutes of ELNPPT and Gotham Parish Council, Gotham News
31-Oct-12	RBC Core Strategy submitted to Secretary of State	RBC website
8-Nov-12	ELNPPT response submitted to 12/01821/OUT Land off Lantern Lane outline planning application for 170 homes plus primary school annex	Response
9-Nov-12	NP Web page set up on ELPC Website	Website
13-Nov-12	ELPC special meeting re 12/01821/OUT Land off Lantern Lane outline planning permission 170 homes plus primary school annex	Minutes
14-Nov-12	ELNPPT response submitted to 12/01840/OUT Kirk Key outline planning application 175 homes	Response
20-Nov-12	ELPC special meeting re 12/01840/OUT Kirk Ley outline planning	Minutes

	permission for 175 homes	
21-Nov-12	Consultation meeting with Costock Parish Council	Minutes of NPPT and Costock Parish Council
29-Nov-12	Meeting of ELNPPT	Minutes
29-Nov-12	Consultation meeting with Bunny Parish Council	ELNPPT minutes, 8 Jan 2013 and minutes of Bunny PC
Dec-12	ELPC Newsletter articles – East Leake Community Plan and Neighbourhood Plan	
4-Dec-12	East Leake Parish adopted by RBC as Neighbourhood Plan Area	Letter
5-Dec-12	Stanford Hall plans submitted to RBC for planning permission 12/02070/HYBRID and listed building permission 12/02071/LBC	
10-Dec-12	ELPC special meeting re 12/01887/FUL Meeting House Close Full planning permission application for 61 homes	Minutes
10-Dec-12	BBC news item – inspector criticises RBC Core Strategy	http://www.bbc.co.uk/news/uk-england-nottinghamshire-20669377
11-Dec-12	ELNPPT response submitted to 12/01887/FUL Meeting House Close Full planning permission application for 61 homes	Response
12-Dec-12	Meeting of ELCPG and presentation of preliminary results of survey	Minutes
12-Dec-12	Meeting with Keyworth NP Group	ELNPPT minutes, 8 Jan 2013
13-Dec-12	Attendance at EL Business Forum to discuss draft vision etc (vision circulated by email to all members beforehand)	
7-Jan-13	Consultation meeting with Sutton Bonnington Parish Council	ELNPPT minutes, 8 Jan 2013, Sutton Bonnington PC minutes
8-Jan-13	Meeting of ELCPG	Minutes
8-Jan-13	Meeting of ELNPPT (with launch of mini projects)	Minutes
15 and 29 Jan	ELNPPT subgroup – transport meetings	2*notes
21-Jan-13	Consultation meeting with Rempstone Parish Council	ELNPPT minutes, Rempstone PC minutes
31-Jan-13	RBC Core Strategy Examination Exploratory Meeting	Report of meeting
4-Feb-13	ELPC special meeting re 12/02173/OUT Woodgate outline planning application 65 homes	Minutes
5-Feb-13	Meeting of ELNPPT	Minutes
8-Feb-13	ELNPPT response submitted to 12/02173/OUT Woodgate outline planning application 65 homes	Response
13-Feb-13	Meeting of ELCPG	Minutes
14-Feb-13	Letter from inspector re RBC Core Strategy asking to withdraw or suspend for 6 months	Letter
11 and 20 Feb	Meetings CT with Estate Agents	Reports
20-Feb-13	Planning permission refused by RBC 12/01887/FUL Meeting House Close full planning permission application for 61 homes	RBC website
Mar-13	ELPC Newsletter Article – Neighbourhood Plan	
5-Mar-13	Meeting of ELNPPT	Minutes
12-Mar-13	CT/CO Interviewed for CABA case study	
13-Mar-13	Draft vision launched with invitation to comment. Press release, copies distributed with newsletter, added to websites, sent to statutory consultees, MP etc	Draft vision leaflet. Press release, websites
15-Mar-13	Meeting CO with Notts Wildlife Trust	Notes
18-Mar-13	Meeting of ELCPG	Minutes
22-Mar-13	CO/CT attend NP Sharing and Learning Event run by Design Council London	Course notes
22-Mar-13	Article re vision consultation in Loughborough Echo	
23-Mar-13	ELCPG second drop-in day – action planning	Summaries of Post-it notes, photos

2-Apr-13	Meeting of ELNPPT	Minutes
9-April-13	RBC Core Strategy “technical” meeting with inspector	
11-April-13	Meeting of ELCPG	Minutes
May-13	ELPC Newsletter articles on Neighbourhood and Community Plans.	Newsletter
7-May-13	Meeting of ELNPPT	Minutes
16-May-13	RBC Development Control approve Kirk Ley outline planning permission	Minutes
17-May-13	ELNPPT Meeting with Stanford Hall Developer	Notes
22-May-13	Annual Parish Meeting – NP stall	
29-May-13	Meeting of ELCPG	Minutes
4-Jun-13	Meeting of ELNPPT	Minutes
19-Jun-13	Meeting of ELCPG	Minutes
2-Jul-13	Meeting of ELNPPT	Minutes
9-Jul-13	Joint meeting of ELNPPT and ELCPG	Minutes
9-Jul-13	Meeting of ELCPG	Minutes
16-Jul-13	RBC meeting with DLCG planners, John Thurman attended	Presentation slides
19-Jul-13	ELNPPT response submitted to Meeting House Close full planning application (resubmission, 13/01263/FUL	Response
23-Jul-13	ELPC special meeting re Meeting House Close full planning application (resubmission, 13/01263/FUL	Minutes
26-Jul-13	ELPC respond to RBC’s consultation on Green Belt and further housing sites	Responses
26-Jul-13	ELPC submit a request to RBC for nomination of Nag’s Head site as Asset of Community value	
26-Jul-13	ELNPPT submit application to Locality for £7000 grant plus direct support to assist with NP	
6-Aug-13	Meeting of ELCPG	Minutes
16-Aug-13	RBC grant outline permission 12/01821/OUT Land off Lantern Lane for 170 homes plus primary school annex	RBC planning website
20-Aug-13	ELPC special meeting re full planning permission application 13/01396/FUL, Land West of Field End Close, East Leake	Minutes
22-Aug-13	ELNPPT respond to full planning permission application 13/01396/FUL, Land West of Field End Close, East Leake 18 homes	Response
3-Sep-13	Meeting of ELNPPT	Minutes
4-Sep-13	RBC grant outline permission 12/02173/OUT Woodgate 65 homes	RBC planning website
6-Sep-13	Locality award ELNPPT direct support plus grant of £2050	
17-Sep-13	Meeting of ELCPG	Minutes
27-Sep-13	Meeting CO/CT with Rachel Hogger, Planning Aid England re “direct support” element of grant	
1-Oct-13	Meeting of ELNPPT	Minutes
2-Oct-13	RBC grant outline permission 12/01840/OUT Kirk Key outline planning application 175 homes	RBC planning website
8-Oct-13	Developer exhibition – Costock Road development	
10-Oct-13	Stanford Hall plans approved by RBC for planning permission 12/02070/HYBRID and listed building permission 12/02071/LBC	RBC planning website
22-Oct-13	ELNPPT submit second bid to Locality for remainder of £7000	
30-Oct-13	Meeting of ELCPG	Minutes
31-Oct-13	Locality award ELNPPT grant of £4950	
5-Nov-13	Meeting of ELNPPT	Minutes
8-Nov-13	RBC grant full planning permission 13/01263/FUL Land South of Meeting House Close 61 homes	RBC planning website
25-Nov-13	Meeting CO/CT with Jeremy Elvins and Allen Gorringer at British Gypsum	
28-Nov-13	Meeting of ELCPG	Minutes
11-Nov-13	Meeting between ELNPPT and Keyworth NP Group	
25-Nov-13	RBC decision to approve nomination of Nag’s Head site as Asset of Community value	RBC Website
3-Dec-13	Meeting of ELNPPT	Minutes

12-Dec-13	Meeting of ELCPG	Minutes
12-Dec-13	RBC approve revised core strategy	Minutes
17-Dec-13	RBC refuse full planning permission application 13/01396/FUL, Land West of Field End Close, East Leake	RBC planning website
18-Dec-13	ELNNPT response submitted to 13/02228/OUT outline planning application for Land To East Of Meeting House Close Costock Road	Response
19-Dec-13	Andy Beard and Bob White (consultants) work with ELNNPT on the content of the plan, and the village centre options, respectively.	
7-Jan-14	Policy Writing Workshop – Planning Aid England for ELNPPT members	Report
7-Jan-14	ELPC special meeting re 13/02228/OUT outline planning application for Land To East Of Meeting House Close, Costock Road	Minutes
8-Jan-14	Meeting of ELCPG	Minutes
28-Jan-14	Play Policy formally adopted by ELPC	Minutes
4-Feb-14	Meeting of ELNPPT	Minutes
6-Feb-14	Meeting of ELCPG	Minutes
13-Feb-14	RBC approve outline planning permission, Costock Road 13/02228/OUT	Minutes
24-Feb-14	ELNPPT response submitted to 13/02259/REM reserved matters, Woodgate Road	Response
25-Feb-14	Woodgate developers meet with ELPC	Minutes
3-Mar-14	Meeting of ELCPG	Minutes
4-Mar-14	Meeting of ELNPPT	Minutes
Mar-14	ELPC Newsletter articles on Neighbourhood and Community Plans	Newsletter
18-Mar-14	Woodgate developers meet again with ELPC with amendments to reserved matters, following meeting on 25-Feb	Minutes
25-Mar-14	ELPC approve Village Centre policy V1, but not the indicative scheme for policy V2	Minutes
1-Apr-14	Meeting of ELNPPT	Minutes
7-Apr-14	Meeting of ELCPG	Minutes
8-Apr-14	ELPC special meeting re 13/02259/REM, reserved matters for Woodgate Road development, and full permission for 28 homes on former Rabbit Farm, Gotham Road, 14/00357/FUL	Minutes
10-Apr-14	ELNPPT meeting with East Midlands Airport	Meeting notes
22-Apr-14	ELPC approve sections on Business, Transport and (revised) Village Centre.	Minutes
24-Apr-14	ELNPPT meeting with County Council re School strategy	Meeting notes
28-April-14	RBC approve reserved matters, Woodgate Road 13/02259/REM	Decision notice
6-May-14	Meeting of ELNPPT	Minutes
12-May-14	Workshop on Building for Life	Course materials etc
13-May-14	ELPC consider 14/00707/OUT – outline for The Heavens	Minutes
14-May-14	ELNPPT members meeting with British Gypsum Sustainability Leader to discuss first 3 draft sections	
19-May-14	Meeting of reformed ELCPG	Minutes
May-14	Delivery of Community Plan brochure and action plan to village residents	
20-May-14	RBC Core Strategy Examination – representations invited	RBC website
21-May-14	Annual Parish Meeting – NP presentation and display	
28-May-14	ELPC planning committee – presentation from Barratt Homes re Lantern Lane development	
3-Jun-14	ELPC planning meeting, considering reserved matters for Lantern lane development 14/00815/REM and full permission for 28 homes on Former Rabbit Farm 14/00357/FUL.	Minutes
4-Jun-14	Meeting of ELNPPT	Minutes
12-Jun-14	RBC development control approval – Former Rabbit Farm 14/00357/FUL.	
17-Jun-14	ELPC – presentation from developers of Costock Road development	
24-Jun-14	ELPC approved draft NP (v 3.1)	Minutes
1-Jul-14	Meeting of ELNPPT	Minutes
1 to 11 Jul-14	RBC Core Strategy Examination Hearings	

10-Jul-14	Approval of Stanford Hall Plans by government	Stanford Hall Website
10-Jul-14	RBC development control approval – Heavens 14/00707/OUT	
17-Jul-14	Meeting of ELCPG	Minutes
20-Jul-14	Draft v4 published on website and sent to key stakeholders for pre consultation check	
12-Aug-14	ELPC consider 14/00815/REM – reserved matters for Lantern Lane	Minutes
24-Aug-14	Formal approval by ELPC of NP V4	Minutes
29-Aug-14	Deadline for return of comments by key stakeholders	
2-Sep-14	Meeting of ELNPPT	Minutes
9-Sep-14	ELPC consider 14/01641/REM – reserved matters for Costock Road	Minutes
10-Sep-14	Meeting with Radcliffe on Trent Parish Council re their NP	
11-Sep-14	Publication on ELPC website of consultation version of NP (V6)	
13 to 15 Sep	Distribution of consultation leaflet to residents	Statement of Consultation
11 to 30 Sep	Other publicity for consultation	Statement of Consultation
26-27 Sep	Drop-in days for NP consultation	Statement of Consultation
29-Sep-14	End of Consultation period on RBC Core Strategy main modifications	
7 Oct-14	Meeting of ELNPPT	Minutes
9-Oct-14	Meeting of ELCPG	Minutes
9-Oct-14	RBC development control – 14/01641/REM reserved matters for Costock Road	Minutes
14-Oct	ELPC consider 14/01927/VAR – increase Kirk Ley site by 100 homes	Minutes
31-Oct-14	Closing date for consultation	
4-Nov-14	Meeting of ELNPPT	Minutes
26-Nov-14	ELNPPT meeting with RBC re housing policies	Amendments to NP
3-Dec-14	Meeting of ELNPPT	Minutes
13-Dec-14	Health Check of NP by NPIERS - report received	Report
22-Dec-14	RBC Council meeting approves Local Plan Part 1 (Core Strategy)	Minutes
6-Jan-15	Meeting of ELNPPT agrees final amendments and approves submission version	Minutes
13-Jan-15	ELPC meeting - approve submission version	Minutes

Appendix 3 - Summary Analysis of 2009 Questionnaire Survey re Parish Plan Update

May 2009 – Parish Plan Questionnaire

Total of 219 responses

- 97% were home owners
- 70% had lived in East Leake longer than 15 years
- 92% had one or more computers in their household
- 28% relied on public transport “daily “or “weekly”.

Housing

There was broad agreement with statements that:

- New housing should be limited to developments of less than 5 houses at a time
- There should be more affordable housing to enable younger people to stay in the parish
- There should be more sheltered housing to enable elderly residents to stay in the parish

The freestyle comments showed a range of views on the size and nature of future housing developments, with the following emerging as recurring themes:

- the need for infrastructure (sewerage, roads, roundabouts, schools, health services etc) to be developed before or alongside new housing developments
- concern for aesthetics, sense of community, village character, etc
- several opposing comments on the desirability of infill developments, suggesting at an interesting debate to come on this

Environment

Respondents were asked to rate the importance of 12 different aspects of environmental control.

The following emerged as the most important:

- Protection of green spaces
- Pedestrian crossing
- Keeping the village clean and tidy
- Protection against dog fouling, fly tipping, noise etc
- Recycling
- Prevention of pollution

The comment box for this section was again very well used, the biggest issues being:

- Speeding traffic
- “Attractiveness” – maintaining and improving trees, parks, flowers etc
- Pedestrian crossing
- Litter
- Parking enforcement
- Surfaces of roads and pavements
- Maintenance of shop fronts
- Maintenance and improvement of footpaths and bridleways

Transport

The local bus service scored well on routes and reliability, and fairly well on timetable, school service, and community bus service. Value for money was less good and there were several comments about the poor evening service.

There was broad agreement on traffic issues:

- 91% of respondents thought the village needed pedestrian crossing(s).
- Only 10% would be prepared to pay for parking.
- 72% would like to see parking restrictions enforced.
- 78% thought there were sufficient car parks.

Community Services

- 17 services were listed, and all averaged score of “fair” or “good” apart from public toilets.
- Only small numbers stated that they had difficulty accessing various services, though a worrying 29 responses indicated difficulty accessing a GP.
- 63% agreed with the statement that there is a need for improved Health Centre facilities.

Amenities

9 amenities were listed and most respondents thought that in terms of importance all these were at least “worth having”. The Post Office was seen as the most important, and public computer access as least important, although even this was rated “very important” on 43 forms.

A free text question asked for suggestions for improvements or additions to amenities. Most frequently mentioned were:

- The leisure centre, reflecting a threat at that time to the swimming pool, plus several suggestions for improvements
- Banking facilities
- Post Office
- Village Hall
- Youth facilities

A free text question asked what clubs and activities household members were involved in. Most frequently mentioned were the Leisure Centre/swimming (49), and churches (29). Suggestions were sought for clubs and activities that the village lacks. There was a range of suggestion, with the following being mentioned 4 or more times:

- Youth facilities (7)
- Adult education classes (7)
- Walking (6)
- Bridge (4)
- Tennis (4)

Local Councils

- Parish Council publicity for its decisions and activities was rated “reasonable” or “very good” by 79% of responses.
- Around half the replies indicated that people knew who their councillors (Parish, Borough, County) were.
- Over half thought that the Parish and Borough councils were aware of local concerns, but there was less certainty that the County Council had awareness.
- A range of means is used to find out East Leake issues and events – noticeboards, newsletters, flyers through letter boxes, websites, Loughborough Echo, word of mouth - are all important.
- Around half the respondents indicated that they use Council and Government websites for information.
- A question about overall priorities for action for the Parish Council received 125 varied and thought-provoking comments on the topics largely covered above.

Business Facilities

Questions in this section did not reveal any significant agreement about needs other than banking facilities. There were several pleas that residents should support local shops and businesses.

Appendix 4. East Leake Parish Council Newsletter articles, August 2011 onwards

August 2011 - **“Your Village, Your Plan”**

A community-led plan is “a holistic vision and programme of action based on consultation, research and survey followed by community action planning”. Having a robust plan in place means that the village has a positive voice, and this helps us as a community to obtain the amenities and services we require and to influence planning processes relating to the village.

East Leake was the first parish in Rushcliffe to develop our Parish Plan in 2004, and since then there have been considerable changes that affect the neighbourhood, both within our local area and further afield. Revising the plan, or starting a new planning process afresh, is a major exercise that must involve all parts of the community. The Parish Council can facilitate the process, but a group of people with motivation, time, and skills is needed to take forward the consultation work, collation, publication and subsequent implementation. The Parish Council is currently contacting local groups to get together to plan the way forward. If you would like your organisation to be part of this process, or if you feel you can make a contribution as an individual, please contact the Clerk to be added to the register of interested parties. There will also be plenty of opportunity for you join in later on in the process.

Watch out for further information at the Village Show, and more about this in the next Parish Council newsletter.

November 2011 – **“The East Leake Community Plan”**

Following the Village Hall meeting to invite residents to form a steering group to take forward the Parish Plan initiative for East Leake, a further meeting took place on Thursday 13 October at the Parish Council Office to decide on how this could be put into practice. Jenny de Villiers was elected Chair, Vicenta Rose as Secretary, and Neal Wright as Treasurer. The Steering Group agreed to focus on relevant themes and put together a series of actions that will contribute to the overall planning within the group. This is a community led project, working in partnership with all stakeholders within East Leake and its aim is to promote, unite and develop East Leake as a village that residents are proud to live and work in. In due course, all residents will be invited to give their views which will contribute to the direction that YOU wish East Leake to take in the coming years. Further details on the above from Jenny de Villiers, Chair on ...

February 2012 – **“PLANS, PLANS, PLANS!”**

East Leake Neighbourhood Development Plan

Under new legislation Parish councils can use new neighbourhood planning powers to establish general planning policies for the development and use of land in a neighbourhood. These are described legally as 'neighbourhood development plans'. They must tie in with the local development framework. East Leake Parish Council is in the early stages of considering how best we can take this forward.

Local Development Framework

During December Rushcliffe Borough Council approved their new “core strategy” encompassing the “Local Development Framework” which, once formally adopted, will define a spatial vision for Rushcliffe, including the number of houses to be built over the plan period and, in broad terms, their location. In response to a shortfall in housing available in the greater Nottingham area and nationally the strategy aims to provide a minimum of 9,900 new homes in Rushcliffe

in the period 2009 to 2026. East Leake has been identified as one of several “key settlements” targeted for growth, and an additional 400 new homes are allocated to East Leake. The location of these within the village has not yet been determined.

The Core Strategy now enters a period when interested parties, including members of the public, may make representations about the document to be considered alongside the Core Strategy when it is submitted to the Secretary of State for final approval later in the year. The document can be found on the Rushcliffe borough Council website. Go to:
<http://www.rushcliffe.gov.uk/councilanddemocracy/meetingsandminutes/minutesandagendas/2011/december/15decembercouncil/> The link will take you to the page for the 15th December Council meeting Agenda and if you look on the right hand side you will see related documents - it is item 7.

Community Plan

The East Leake Community Plan Group has explored a number of themes relating to life in East Leake and is compiling information with further opportunities to feed into this at the Drop-In sessions in March and through a questionnaire to residents in mid 2012. We are keen for this to be "your voice" on the way East Leake develops in the coming years. Jenny de Villiers – Chair

April 2012

Local Development Framework

At the time of writing the Parish Council is drafting a response to Rushcliffe Borough Council's Local Development Framework (LDF) - the consultation period for this runs from 23 March to 8 May. The documentation can be found on their website under “planning”. The LDF states that a minimum of 400 new homes are planned for East Leake between now and 2026, at locations yet to be identified. The Parish Council's response will stress the need for facilities including Health Centre, schools, drainage, road safety improvements, and public transport improvements to be provided before any further new homes and point out other local factors that need to be considered. The impact on East Leake of the proposed large development South of Clifton will also be covered in our response.

East Leake Community Planning Group

The Drop In Sessions that took place on Friday 9 and Saturday 10 March were a huge success and we thank the many residents and businesses of East Leake who took time to come along to give their views and “have their say”. The themes included education, transport, the environment, leisure, business, health, the elderly and the young. This important feedback will be collated and will contribute towards a further questionnaire going out later in the year. And please do complete the questionnaire as we need the hard data that this will generate to put some weight behind our views. This information will then feed into a final plan that will indicate your vision of how you see and would like to see East Leake in the coming years. There are clearly concerns in a number of areas and these can now be picked up on and addressed collectively.

It was a real community experience to organise this type of event, not only in the planning and the preparation but also to meet together in the Village Hall and share ideas. Thank you again to all involved.

August 2012

Planning the East Leake YOU want

East Leake Parish Council is embarking on the process of drawing up a “Neighbourhood Plan”. Your questions are answered below.

Q. Is this different to the Community Plan?

A. Yes – it has a more focussed remit, concentrating on Planning with a capital P – i.e. the framework by which housing and other local developments are approved by Rushcliffe Borough Council. The Neighbourhood Plan is led by the elected Parish Council. The Community Plan, on the other hand, is led by a community action group and has a much broader scope, including crime prevention, environment, business, leisure activities etc.

Q. Will I have a chance to give my views?

A. Yes, yes! There will be a series of opportunities for different stakeholder groups to have their say and contribute to the content of plan. We will also draw on the results of other consultations, such as the Community Plan Questionnaire, and Rushcliffe Borough Council’s “Fresh Approach to Housing”. A draft plan will be available for further comment before the final stage – a formal referendum to adopt the plan.

Q. Can I help with the work?

A. Yes, yes, yes (please)! The project team will be looking for enthusiastic individuals with time to spare and skills and experience in relevant areas (e.g. planning, architecture, built environment, writing, publication and web design, surveying, understanding legalese, research, data analysis, running focus groups, project management) to roll up your sleeves and get on with the work. Maybe you have spare time in the evenings or have recently retired from a related role and are looking for something to exercise the little grey cells during the day? There may also be an opportunity for a placement or internship for a University student in a suitable subject. Do get in touch with the Parish Council if you think you may be able to help and would like to learn more.

Q. When is this going to happen?

A. Some preliminary work has already been undertaken, with four workshops facilitated by CABE (Commission for Architecture and the Built Environment). The first two looked at the characteristics of “good places” and “good housing design”, and more recent workshops have started developing a vision for East Leake and a project schedule for the Neighbourhood Plan process. The whole process is expected to take about 18 months.

Have YOUR say

By now you may have received your household’s copy of the East Leake Community Plan Questionnaire, due to be distributed by Community Plan Group volunteers at about the same time as this newsletter. Please contribute to our Community Plan and have your say on a wide range of issues by filling in and returning the questionnaire by 14th September.

You can complete the questionnaire online, by entering the unique form number into an online survey tool. There will also be a number of distinctive collection boxes located in the Parish Office, Village Hall, Cooperative Kiosk, Something Special, Post Office, Leisure Centre and Health Centre. Or contact us to collect your questionnaire if you are unable to get to a collection point. Full details of all this are on the questionnaire itself. If you don’t receive yours by 10th September, please get in touch.

Email: Jenny de Villiers, Chair of East Leake Community Plan Group

Exhibiting the Future

There have been three recent consultation exercises by developers about potential local

development , including new housing off Lantern Lane and Kirk Lea. Many of you attended the exhibitions and gave your views. The Parish Council may have the opportunity to formulate a collective response to the two housing developments at the point when formal proposals come to the Planning Committee for comment.

The third exhibition was for proposals for a new Defence and National Rehabilitation Centre at Stanford Hall (see <http://www.stanfordhallredevelopment.org.uk/>). This was debated at the Parish Council Meeting of 24 July 2012, and a response made generally welcoming the development and the investment in this important field, and expressing the following views: Any future consultation events should be held in East Leake as well as Rempstone and Hoton. Traffic flow in and around Stanford Hall would need some consideration. It was hoped the theatre would continue to be open to the public and the diving boards in the swimming pool preserved, perhaps as a sculpture.

December 2012

East Leake Community Plan

The East Leake Community Plan Group would like to extend a very big thank you to all the residents of East Leake who completed the questionnaire. The response rate was nearly 40% which is amazing!

As a reminder of the process – every household in the village received a questionnaire, late August and early September, hand delivered by a team of volunteers from the group. This was followed up in mid-September by the delivery of further reminders and a short extension to the deadline for return as we were still receiving such a good response. Banners in the village also advertised the questionnaire.

The data from the responses is now being collated by an external company that specialises in social research and statistical analysis. The results should be available in mid December 2012. Your views will inform the East Leake Community Plan. The Community Plan will be made available to everyone in East Leake and will input into the work of the Parish Council, Rushcliffe Borough Council and Nottinghamshire County Council.

The East Leake Community Plan Group will evolve into an Implementation Group to progress issues and the Community Plan. Residents of East Leake will be invited to support the initiatives identified as it's important for the community to take ownership of its Community Plan and make it happen.

The group will be publishing the plan and holding further drop in sessions in Spring 2013.
Jenny de Villiers, Chair of East Leake Community Plan Group

Neighbourhood Plan

East Leake Parish Council has now formed a project team to produce a Neighbourhood Plan to cover the Neighbourhood Area of the East Leake parish. Neighbourhood Plans are subject to a formal adoption process, including a referendum, and if adopted they carry the weight of law. The entire process is expected to take 18 months. At the time of writing, the designation of the Neighbourhood Area is currently awaiting approval from Rushcliffe Borough Council. The terms of reference and membership of the project team can be viewed on the Parish Council website.

A vision statement for East Leake has been drafted, and will shortly be distributed to the residents of the village for comment. The Neighbourhood Plan will establish planning principles that take forward the aspirations in the vision under the following headings:

- A viable community (community feel / employment)
- Green environment
- An attractive village centre
- Easier to get around (walking, cycling, wider links)
- Better facilities and services
- Housing for all

As the work progresses, further information will be made available via the Parish Council website, and various consultation events will take place with different interest groups in East Leake.

March 2013 - **Neighbourhood Plan**

Being delivered with this issue is the draft vision for East Leake, which has been produced by the Neighbourhood Plan Project Team. Please take the time to consider the vision and contact the team with your comments, via the Parish Office.

Q. What are Neighbourhood Plans?

A. They were introduced by the Localism Act to give local communities new rights and powers to shape new development in their area.

Q. Who is producing East Leake's Neighbourhood Plan?

A. The Parish Council has responsibility for this and it has created a project team including councillors, members of the public, and staff of the Borough Council, County Council, and Rural Community Action Nottinghamshire.

Q. Is this different from the Community Plan?

A. Yes. Once it has been legally examined and supported by a referendum the Neighbourhood Plan will contain policies governing how land is developed in East Leake and will carry the weight of law. The Community Plan is run by a group of volunteers and it has a much broader brief and covers other aspects of community life, with an emphasis on the community getting together to make things happen.

Q. Are the plan groups working together?

A. Very much so. Some people are on both groups to ensure that the plans fit together where they need to.

Q. Will the plan stop the current proposed new housing developments in East Leake?

A. That is unlikely, due to timing. Also the plan will have to conform to national and borough policies on numbers of new houses. However it could influence this number in the future, and also affect when houses are built; where in the village they go; the types of houses and their appearance; the layout of developments and other important decisions.

Q. What is happening in the project at present?

A. The draft vision is out for comments, and research and consultation is taking place to start creating policies to help implement the vision. See the Web page at: <http://www.east-leake.gov.uk/east-leake-neighbourhood-plan>

Q. How can I get involved?

A. Tell us what you think of the draft vision, and watch out for other consultation activities. If you have relevant expertise and would like to help with the research and writing, we would love to hear from you.

May 2013

Neighbourhood Plan

With the last newsletter we distributed the draft vision for East Leake. This has also been put in various locations in the village and covered in the local press, so you have probably seen a copy by now! If not, you can pick one up from the Parish Office (weekday mornings), or if you are housebound give them a ring and we'll drop one round to you. It is on the Parish Council website - <http://www.eastleake.gov.uk/> - follow the Neighbourhood Plan link on the left hand side. Many thanks to everyone who has sent in responses to date – the Group is working through these and will issue a final version of the vision in due course. It's not too late to respond – we did not set a deadline and will take comments as they come in.

The next step will be to draft options for policies to take forward the objectives in the vision. These will be the subject of further consultation. The completed plan will also have a period when you can comment, and will ultimately go to a referendum, so you have plenty of chances to make your views known. Once approved by the referendum, the policies in the plan will have the weight of law. This is proving to be quite a lengthy process, but we have a willing group taking it forward. We can do with more help, so if you are interested in getting involved, please let us know via the Parish Office.

COMMUNITY PLANNING GROUP

Over 70 people attended the East Leake Drop In Post Questionnaire session on 23 March in the Village Hall despite very heavy snow! You are cordially invited to attend the East Leake Annual Parish Meeting and Community Forum on 22 May - 7 pm in the Village Hall where you can have another opportunity to "have your say" on how to make your views take shape, to feed into the East Leake Community Plan.

October 2013

Photographic Competition - East Leake Community Plan Group

The East Leake Community Plan Group (ELPG) is putting together a brochure with the findings from the questionnaire that YOU all completed last year. It will also include the action plan that we have put together based on YOUR comments and following further drop-in sessions held earlier this year. We really want the brochure to stand out and so we need some photographs ... which is where YOU come in!

[The remainder of article contained details of the competition, not included here.]

March 2014

East Leake Neighbourhood Plan

The Neighbourhood Plan will reflect the issues you have identified as important and give us all a major say in how our village is developed in the future.

It will contain policies on housing development; employment and business; transport, communications and traffic; infrastructure and public services; landscape conservation; use of land for leisure and play; and improvements to the village centre.

Following the consultation on the vision for the village, the project team has started work on drafting the text and policies of the plan. A grant of £7000 has been obtained from the

Department of Communities and Local Government, and some of this is being used to pay consultants to help us with the work, particularly the technical elements where the team does not have the required expertise. We have also secured assistance from Planning Aid England, and an adviser has been assigned to work with us.

The drafting, research, and discussions with various stakeholders will continue until May 2014, with the aim being to print the draft plan in June, with publicity to residents at this point. There will be a 6 week consultation period over the summer, and we aim to submit the plan to Rushcliffe Borough Council in the Autumn. Various formal processes then take place, culminating with a referendum in May 2015. If the required majority votes for the plan its planning policies will then have the force of law.

East Leake Community Plan

THE EAST LEAKE COMMUNITY PLAN IS TO BE LAUNCHED ON SATURDAY 26 APRIL IN THE VILLAGE HALL with coffee and refreshments at 10:00am. Make sure you come along and hear about the Plan and the resulting Action Plan that has combined your views through the questionnaire circulated to every household. This is a great opportunity to find out how your views can be taken forward as we seek to develop East Leake in the coming years. Community groups and local businesses are invited to come along with local residents. Further information from Jenny on

May 2014

Front page – Notice of Annual Parish meeting, including Neighbourhood Plan as one of two main items.

Community Plan Launch

On Saturday 26 April the East Leake Community Plan Group launched its Community Plan. This is a culmination of two year's preparation in consultation with every resident of the village to obtain their views. A copy will be circulated to every household during May. The Action Plan resulting from this Plan will cover areas such as health, leisure, social care, transport, youth, the local environment, and crime.

August 2014

East Leake Neighbourhood Plan

East Leake is preparing a Neighbourhood Plan, to help residents determine how East Leake will develop in the future. It is based on the views you expressed about housing and planning in the Community Plan's drop-in days and questionnaire and it will set planning policies specific to East Leake that are then used in making decisions when planning applications are submitted to Rushcliffe Borough Council.

An initial draft of the plan has been approved by the Parish Council and sent to Rushcliffe Borough Council and other key stakeholders to identify any major issues prior to public consultation. This draft is at <http://www.east-leake.gov.uk/east-leake-neighbourhood-plan> along with supporting documents. Please take a look. Comments are welcome at any time until the end of the public consultation period - please submit via the Parish Clerk.

If all goes to schedule, the plan will be redrafted as necessary at the start of September, and an easy-to-read summary of the policies in the plan, with a comments form, will be delivered around the village. The formal public consultation period will run from 15 Sept to 31 Oct 2014. Please watch out for the summary and let us have your views.

Appendix 5 – Written responses to the draft vision consultation

The responses from residents are anonymised below. The vision was distributed with an issue of the Parish Council Newsletter that included an article about parking, and it was not always clear if the residents were responding to the vision, the newsletter, or both, so all responses are included.

Resident 1 – email 4 March 2013

Hi,

Thank you and the project team for the Draft Vision document which came through the letterbox today. I agree with the objectives, and appreciate the hard work which has gone into it. You asked for observations on the draft vision, and so I would like to make some comments regarding the attractive village centre objective, and in particular the current shopping centre area.

Notwithstanding the historic centre, to many people this shopping area is the de facto village centre, and as relative newcomers (15 years here) we have often felt that this rather lets down the village. However, within the constraints of the current road layout, it is difficult to envisage any simple way to remedy this other than relatively cosmetic improvements. As a result I would like to suggest a fairly radical step which might be contemplated, and which could maybe unlock the potential to give our village/small town the attractive and larger shopping centre it deserves, and will need, if the current rate of expansion keeps up.

The suggestion is as follows:

Remove the central T junction and two way road section and replace this with two one-way roads coming off Main St and joining with Gotham Road. The South bound road could be routed either North or South of the fire station and join up with the Coop access road. The North bound branch is more difficult, but if combined with a project to replace the village hall (maybe to a location West of the bowls green?) could use that space to cut through. Mini islands where each road joins Main St would manage traffic, probably better than the t junction at busy times, and have the beneficial side effect of slowing down East-West/West-East traffic on Main Street which despite the new pedestrian crossing is still often travelling at excessive speeds.

(If you look at the satellite view of the village centre on Google maps it is easier to visualise this – see: <https://maps.google.com/?ll=52.83205,-1.177254&spn=0.004505,0.009688&t=h&z=17>)

I realise that this would be expensive, and would have to be a long term objective, but I feel it could be worth exploring. Doing this would then leave us with a central triangular island which would be pedestrianised and could provide sites on its North and South sides for new developments forming a central square in due course. I think this could provide a much more attractive and pedestrian friendly shopping area. It could also prove to be a much better proposition for future development than the current road constrained layout, and as a result might be more likely to attract commercial re-development funds, and possibly grants. It might even be possible to get some of this work done as a condition of further housing developments.

Resident 2 – email 3 March 2013

Dear Project Team,

Liked the vision – if it can ever be achieved. Thought the housing section was spot on. One suggestion. The Green Environment section is a bit weak. All about green spaces, which is OK, but doesn't say much about us aiming to be a sustainable community in terms of recycling, or energy use.

Latter could say something about public transport and the biggest blot on the local community environment – the airport.

Resident 3 – email 7 March 2013

Dear Sir / Madam,

After reading the proposal in the newsletter I just wanted to say how much I have welcomed the contents. I am really concerned about the parking on main street in the village it is getting borderline dangerous, Cars swerving in and out and parked badly at times. I am concerned that it will not be long before a poor resident of our community is involved in something bad. I also think recent additions in numbers generated by the many new build of recent times has caused the village to somewhat lose its identity. We are becoming more strangers than neighbours. I wish the people involved the very best. I ma also worried about the traffic and the speed at which cars pass my property on [...] Road. [...] There should be flashing speed signs like there are in Kegworth. We all have a duty to protect one another.

Resident 4 – email 9 March 2013

Good afternoon,

After recently reading the above documents, I am mightly concerned about some of the thoughts and ideas. I understand the need and requirement to park cars safely and encourage people into the local businesses, but why are we taking over green fields and covering with Tarmac when there is plenty of potential with the car park next to the bulls head, it is already built (maybe a new surface could be offered to the owners for mutual progression).

The top end of the car park is never used and could easily be used for parking cars for employees of local businesses and visitors to the village.

Surely the loss of green fields on the 'shop front' of east leake is crazy.

I appreciate there might need to be conversations with the owners of the pub but this may give them an extra income stream and encourage foot traffic, also encouraging another smaller business In the village (even a car wash in the vicinity).

There are also a few 'random' comments in the leaflets suggesting improving the attractiveness and presentation of the village centre (see my comment above about tarmacing over green fields. If this is a flood plain then surely the soil absorbs more water than tarmac). There is no substance in this as to what the proposals are or what is on the table e.g. An extra pedestrian crossing opposite Bryers or near the flower shop, 20mph speed limit through the village centre, more railings and flowers, potential of new business fronts? I also understand there is a grant offered from Rushcliffe council for shop frontage signage, why has this not been made clear to the local businesses? Insisting on standard requirements and consistency, similar to when the Christmas trees are put up, they look fantastic and look as if the village is pulling together.

East Leake has great potential and people love living here, we just need to pull it together and not waste lovely land available to us.

I know this is not really in your control, but the village is crying out for a decent family restaurant to walk to, every other house in the village are jumping in their cars and driving to the other villages like hathern, normanton etc just to have a dinner. Grocers, birds and Bryers has shown people are happy to spend money in the village, let's get everyone doing it more.

Also can you advise on the business plan for temporarily improving the health centre. In my day to day business, I have seen this waste of money far too many times and the local residents left pondering on when they will get suitable services. We must continue the push for a completely new health centre other wise we will still be living with a 'hashed' up building for the next 30 years. The health centre and renovated library with the local churches are the lynch pin of what we must build east leake services around.

I look forward to hearing from you and trust my points are clear.

If you do require any further information, please do not hesitate to call.

Resident 5 – email 13 March

I think that there is now general acceptance that East Leake definitely does have a car parking problem and this seems to be reflected in the recent news letter. Surface car parks are often full to capacity and even finding a space on the road is sometimes a problem

Whilst the provision of more spaces is to be welcomed and will ease the situation in the short term, I fear the with all the proposed developments in the village, any benefit will be very short lived.

I do not know for sure, but I get the impression that one of the problems is long stay parking by people using East Leake as a 'Park & Ride' site for commuting to more distant work locations and again, this type of usage can only get worse with more houses.

I would therefore like to propose that the East Leake Parish Council adopt a system already in use with The Southwell Town Council. That is that meters are installed and EVERY USER is made to display a ticket. This ticket permits free parking for up to 2 hours but after that charges are applied. A person using the car park for more than the two hour period is responsible for displaying a ticket to cover the time that they intend to park for. See below:

Charges will apply from 8am to 6pm but there will be an initial period of 2 hours free parking followed by charges of £1.50 to cover the next three hours and £1 an hour thereafter.

Any person not displaying a ticket or outstaying the period paid for is subject to a fine.

I think this is a perfectly reasonable scheme that gives plenty of free parking for residents and visitors to shop or visit the doctor.

Obviously there is a one off cost to install the meter(s) and an ongoing cost to have tickets checked. However, I would suggest that a full time warden would not be necessary. If one were on duty just a couple of days a week and plenty of parking fines issued, people would soon get the message and follow the rules for fear of getting caught.

Perhaps you would like to put this forward for consideration. It seems to work well in Southwell. Whenever we visit, there is always space in the car park near the Minster.

Resident 6 – email 7 July 2013

I feel i have to coment on the Neighbourhood plan. Firstly it is too little too late, secondly nobody is listening to us (us being the people that live in the village). We have lived in East Leake for over 30 years and have seen it get bigger and bigger. We have objected on occasion and nobody listens.

This neighbourhood plan is a total joke. Rushcliffe Borough Council just do what they like and this latest stupid plan is a total farce. I feel sorry for the people that are going to totally waste their time and breath for nothing.

Maintaining the green environment has to be the best joke in this whole plan, thanks to Rushcliffe Borough Council we will have NO green undeveloped hills.

I refer to Kirk-ley and Woodgate developments, We are so sick of constantly being told that we have a say in how OUR village is being developed when clearly we have No say whatsoever. We will restrict new housing to sites within walking distance of the village, this statement made me laugh the most, GOOD LUCK with that one. As [...] said in a meeting we attended earlier this year, if they grant permission for the Woodgate Development it will not stop there. These latest developments have been the final straw and it is with great sadness we feel we have no choice but to consider moving out of East leake.

Date: 25 April 2013
Our ref: 83452
Your ref: None



Carys Thomas
East Leake Plan Project Team

carys.thomas@gmail.com

BY EMAIL ONLY

Customer Services
Hornbeam House
Crewe Business Park
Electra Way
Crewe
Cheshire
CW1 6JC

T 0300 060 3900

Dear Carys,

Planning consultation: East Leake Neighbourhood Plan Vision

Thank you for your consultation on the above dated 09 April 2013 which was received by Natural England on the same date.

Natural England is a non-departmental public body. Our statutory purpose is to ensure that the natural environment is conserved, enhanced, and managed for the benefit of present and future generations, thereby contributing to sustainable development.

Natural England commends your intention to prepare a Neighbourhood Plan and thanks you for allowing us the opportunity to comment on the Vision Document. We consider that the process as a whole will provide an excellent opportunity for protecting and safeguarding locally valued environmental assets.

We generally welcome the East Leake Vision Document particularly the section on maintaining the green environment. We would suggest that the Neighbourhood plan takes all opportunities to enhance the natural environment. Neighbourhood plans may provide opportunities to enhance the character and local distinctiveness of the surrounding natural and built environment; use natural resources more sustainably; and bring benefits for the local community, for example through green space provision and access to and contact with nature. Opportunities to incorporate features into new build or retro fitted buildings which are beneficial to wildlife, such as the incorporation of roosting opportunities for bats or the installation of bird nest boxes should also be considered as part of any new development proposal.

The following is offered as advice to assist East Leake Parish Council.

Natural England, together with the Environment Agency, English Heritage and Forestry Commission has published joint advice on neighbourhood planning which sets out sources of environmental information and ideas on incorporating the environment into plans. This is available at:

<http://publications.environment-agency.gov.uk/PDF/GEHO0212BWAZ-E-E.pdf>

National Character Areas (NCAs)

We suggest that you could make reference to the National Character Areas (NCAs) which divide England into 159 distinct natural areas. Each is defined by a unique combination of landscape, biodiversity, geodiversity and cultural and economic activity. Their boundaries follow natural lines in the landscape rather than administrative boundaries, making them a good decision making framework for the natural environment. The parish of East Leake falls within NCA 74: Leicestershire & Nottinghamshire Wolds and there is a full profile of this area on our website.

<http://publications.naturalengland.org.uk/publication/4492587?category=587130>

Local Wildlife sites

Whilst there are no internationally or nationally designated nature conservation sites within the Parish boundary there are a number of Local Wildlife Sites within East Leake Parish these are:

- West Rushcliffe Disused Railway
- Hotchley Hill
- East Leake Bridleway Verges
- Manor Farm, East Leake Grassland

Further information on these sites can be obtained at the Local environmental record centres which hold a range of information on the natural environment, and we recommend contacting your local office. A list of local records centre is available at: <http://www.nbn-nfbr.org.uk/nfbr.php>

Protected species

You should consider whether your plan has any impacts on legally protected species. To help you do this, Natural England has produced standing advice to help understand the impact of particular developments on protected or Biodiversity Action Plan species should they be identified as an issue. The standing advice also sets out when, following receipt of survey information, you should undertake further consultation with Natural England. [Natural England Standing Advice](#)

Further guidance on useful sources of information is provided as an annex to this letter.

We would be happy to comment further should the need arise but if in the meantime you have any queries please do not hesitate to contact us.

For any queries relating to the specific advice in this letter only please contact Roslyn Deeming on 0300 060 1524. For any new consultations, or to provide further information on this consultation please send your correspondences to consultations@naturalengland.org.uk.

We really value your feedback to help us improve the service we offer. We have attached a feedback form to this letter and welcome any comments you might have about our service.

Yours sincerely,

Roslyn Deeming
Adviser
Land Use Operations
Tel: 0300 060 1524
Email: roslyn.deeming@naturalengland.org.uk

Annex 1 – Information sources

The following is offered as general advice which may be of use in your deliberations.

Information held by your local authority and used in the preparation of Local Plans is often the starting point for neighbourhood plans or orders (depending on how relevant and up to date the information is). Your local authority will be able to advise you further on this.

Other useful information may be available from local environmental records centres, the Historic Environment Record Centres or local environmental and amenity groups. You can also access a range of information and maps about the local environment on the following websites – see:

What's in your backyard?: Provides access to environmental data at a local level www.environment-agency.gov.uk/homeandleisure/37793.aspx
Your Right to Know: Public Registers of environmental permits and licences www2.environment-agency.gov.uk/epr/
Natural England: Publications, maps and data on the natural environment www.naturalengland.org.uk/publications/default.aspx
Nature on the map: Maps about nature, including the location of designated sites www.natureonthemap.naturalengland.org.uk
Multi-Agency Geographic Information for the Countryside: Interactive map of environmental information http://magic.defra.gov.uk/
The Land Information Search: Map based tool on land designations or features www.forestry.gov.uk/website/forestry.nsf/byunique/infd-6dfkmn
English Heritage: Finding and managing your local historic environment http://list.english-heritage.org.uk/ , www.heritagegateway.org.uk and www.helm.org.uk/
Data on the historic environment (Heritage Counts, Heritage at Risk): http://hc.english-heritage.org.uk/ & http://www.english-heritage.org.uk/caring/heritage-at-risk/
Guidance on heritage and community-led planning: www.helm.org.uk/communityplanning



ENGLISH HERITAGE

EAST MIDLANDS OFFICE

Carys Thomas
The Parish Office
45 Main Street
East Leake
Loughborough
Leicestershire
LE12 6PF

Direct Dial: 01604 735400
Direct Fax: 01604 735401

14 May 2013

Dear Ms Thomas,

Neighbourhood Plan for East Leake

Thank you for consulting English Heritage about your Neighbourhood Plan.

We consider that the planning and conservation team at Rushcliffe Borough Council are best placed to assist you in the development of your Neighbourhood Plan and, in particular, how the strategy might address the area's heritage assets. Consequently, we do not consider that there is a need for English Heritage to be involved in the development of the strategy for your area.

We would also advise you to contact the staff at Nottinghamshire County Council who look after the Historic Environment Record. They should be able to provide details of not only any designated heritage assets but also locally-important buildings, archaeological remains and landscapes. Some Historic Environment Records may also be available on-line via the Heritage Gateway (www.heritagegateway.org.uk). It may also be useful to involve local voluntary groups such as the local Civic Society or local historic groups in the production of your Neighbourhood Plan.

English Heritage has produced a number of documents which your community might find helpful in helping to identify what it is about your area which makes it distinctive and how you might go about ensuring that the character of the area is retained. These can be found at:-

<http://www.english-heritage.org.uk/caring/get-involved/improving-your-neighbourhood/find-out-about-your-local-area/>

You may also find the advice in "*Planning for the Environment at the Neighbourhood Level*" useful. This has been produced by English Heritage, Natural England, the Environment Agency and the Forestry Commission. As well as giving ideas on how



44 DERNGATE, NORTHAMPTON, NN1 1UH
Telephone 01604 735 400 Facsimile 01604 735 401
www.english-heritage.org.uk

English Heritage is subject to the Freedom of Information Act. All information held by the organisation will be accessible in response to a Freedom of Information request, unless one of the exemptions in the Act applies.
English Heritage will use the information provided by you to evaluate any application you make for statutory or quasi-statutory consent, or for grant or other funding. Information provided by you and any information obtained from other sources will be retained in all cases in hard copy form and/or on computer for administration purposes and future consideration, where applicable.



ENGLISH HERITAGE

EAST MIDLANDS OFFICE

you might improve your local environment, it also contains some useful further sources of information. This can be downloaded from:

<https://publications.environment-agency.gov.uk/skeleton/publications/ViewPublication.aspx?id=e8ce91c1-6f4c-4acc-9ac1-8fbb443c81be>

If you have any queries about this matter or would like to discuss anything further, please do not hesitate to contact me.

Yours sincerely,

Clive Fletcher

From: Andy Pepper (Trading - portfolio management) [<mailto:Andy.Pepper@co-operative.coop>]
Sent: 04 April 2013 08:46
To: 'parishclerk@east-leake.gov.uk'
Subject: East Leake Neighbourhood Plan

Hi Leslie

I've received details via Rushcliffe Council on the East Leake Neighbourhood Plan. It looks impressive and will provide a clear framework for future development in East Leake, tailored to how the community wants to see the village develop in a sustainable way.

If you need any information/assistance from us as part of any evidence gathering, or any other aspect of the neighbourhood plan process, please let me know.

If there is a mailing list that my details could be added to in order that we can be kept informed of progress I would be grateful.

Regards

Andy

The co-operative estates

Trading Property

Andy Pepper MSc MRTPI
Regional Planning Manager
(Central & Eastern)
Portfolio Management

5th Floor
1 Angel Square
Manchester
M60 0AG

Tel: 08437519559 (internal 777-2911)
Mobile: 07702 505509
Email: andy.pepper@co-operative.coop
Website: www.co-operative.coop

From: The Rt. Hon. Kenneth Clarke, QC, MP



HOUSE OF COMMONS

LONDON SW1A 0AA

6th June, 2013

Dear Ms Thomas,

Thank you very much for sending me a copy of the Draft Vision Statement for the East Leake Neighbourhood Plan. I was very interested in the proposals of the Project Team for the future development of the village, and delighted to see that you are aiming to make the village even more attractive in its rural environment.

The Plan needs to be based very much on the views of the residents of East Leake themselves. It is not for the Member of Parliament to start suggesting revisions. I actually find the vision a very attractive one and I regard your leaflet as a useful piece of briefing for me in future discussions with the Councillors on Rushcliffe Borough Council, who are, of course, eventually responsible for all the important planning decisions. I trust that they will give very serious weight to the Neighbourhood Plan when it is finally settled.

Yours sincerely,

A handwritten signature in dark ink, appearing to be 'K. Clarke'.

Ms Carys Thomas,
East Leake Parish Council,
The Parish Office,
45 Main Street,
East Leake,
Loughborough,
Leics LE12 6PF

Appendix 6 – Attendance lists for CABE facilitated Workshops

Workshop 1 – Townscape, 24 March 2012

Heidi Barnard (British Gypsum)
Martin Enstone (Weatherford)
Conrad Oatey (East Leake Parish Council)
Peter Rapley (East Leake Parish Council)
Gemma Dennis (Rushcliffe Borough Council)
Kevin Shaw (East Leake Parish Council)
Carys Thomas (East Leake Parish Council)
Lesley Way (East Leake Community Plan Group)
Andrew Johnson (Rushcliffe Borough Council)

Workshop 2 – Housing, 28 April 2012

Heidi Barnard (British Gypsum)
Brian Dale (East Leake Parish Council, Rushcliffe Borough Council)
Martin Enstone (Weatherford)
Gary Grayston (East Leake Community Plan Group)
Julie Love (East Leake Community Plan Group/Love and Piste)
Marie Males (East Leake Parish Council, Rushcliffe Borough Council)
Conrad Oatey (East Leake Parish Council)
Kevin Shaw (East Leake Parish Council)
Carys Thomas (East Leake Parish Council)
John Thurman (East Leake Parish Council)
Peter Tyers (East Leake Community Plan Group)
Barbara Wright (East Leake Community Plan Group/Micropropagation Services)
Lesley Way (East Leake Community Plan Group)

Workshop 3 – Vision, 3 July 2012

Heidi Barnard (British Gypsum)
Diane Cockbill (East Leake Parish Council)
Gemma Dennis (Rushcliffe Borough Council)
Jenny de Villiers (East Leake Community Plan Group)
Marie Males (East Leake Parish Council, Rushcliffe Borough Council)
Phil Marshall (Rushcliffe Borough Council)
Conrad Oatey (East Leake Parish Council)
Glennis Robinson (East Leake Parish Council, Manor Farm)
Carys Thomas (East Leake Parish Council)
Peter Tyers (East Leake Community Plan Group)
John Thurman (East Leake Parish Council)
Julie Love (East Leake Community Plan Group/Love and Piste)

Workshop 4 – Project Plan, 25 July 2012

Heidi Barnard (British Gypsum)
Gemma Dennis (Rushcliffe Borough Council)
Phil Marshall (Rushcliffe Borough Council)
Conrad Oatey (East Leake Parish Council)
Carys Thomas (East Leake Parish Council)
Peter Tyers (East Leake Community Plan Group)
Jenny de Villiers (East Leake Community Plan Group)

Workshop 5 - Building For Life, 12 May 2014

Linda Abbey (Keyworth Neighbourhood Plan)
Lesley Bancroft (East Leake Parish Council)
Pam Barnard (resident)
Liz Chmara (Keyworth Neighbourhood Plan)
Sue Cripps-Rainford (resident)
Julie Love (East Leake Community Plan Group/Love and Piste)
Conrad Oatey (East Leake Parish Council)
Carys Thomas (East Leake Parish Council)
Peter Warren (East Leake Parish Council)
Lesley Way (East Leake Parish Council)

Appendix 7 – Playground Consultation – presentation of results

Please note that Appendix 7 is provided in a separate document.

Appendix 8 – Pre Submission Consultation Responses

Please note that Appendix 8 is provided in a separate document.