

Spaces between buildings:



**The Contribution of Streets to
neighbourhood character and public realm**

*New estates may be on the edge of town, but historically the **road layouts** of new developments invariably **encourage car use** rather than cycling or walking, especially if there are no services or employment to walk or cycle to.*

*So new developments may inevitably cause **congestion** on roads into town, as well as **environmental harm** through increased vehicle emissions.*

The Taylor Review



What is a street anyway?

- “A street is a highway that has important *public realm functions* beyond the movement of traffic” (Manual for Streets)
- Streets have a sense of place and are distinctive
- Streets are lined with and provide direct access to buildings and public spaces
- Most highways in built-up areas can be considered as streets.



Streets are the way we experience places.....



...and vital to place making and place identity





“Some housing, such as this, meets planning and highway standards, but fails to create a sense of place or identity. We need to set our sights higher”

The Communities Plan - 2003



Welcome to East Leake!







Poundbury, Dorset









Poundbury

New Hall, Harlow





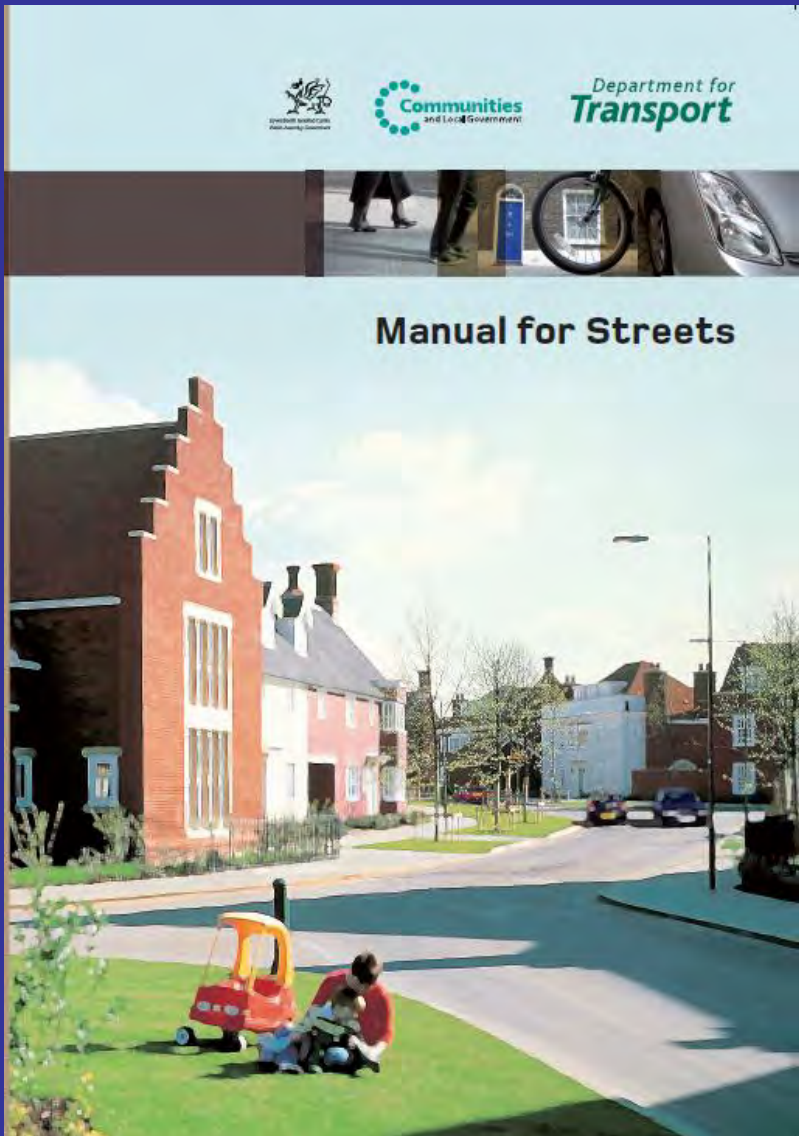








Manual for Streets (2007)



*Streets are the arteries of our **communities** – a community's success can depend on how well it is connected to local services and the wider world.*

*However, streets are not just there to get people from A to B – they have many **other functions**.*

*They form vital components of residential areas and greatly affect the overall **quality of life** for local people.*

(MfS Foreword)

Aims of Manual for Streets

- Bring about a transformation in quality
- A fundamental culture change to achieve streets that:
 - help to build and strengthen the communities they serve;
 - meet the needs of all, by embodying the principles of inclusive design
 - provide part of a well-connected network;
 - are attractive and have their own distinctive identity;
 - are cost-effective to construct and maintain; and
 - are safe.



Sustainability

- MfS promotes walking, cycling, public transport due to...
 - Climate change/emissions
 - Congestion
 - Accidents
 - Health issues
- Labyrinthine and badly connected places encourage car use



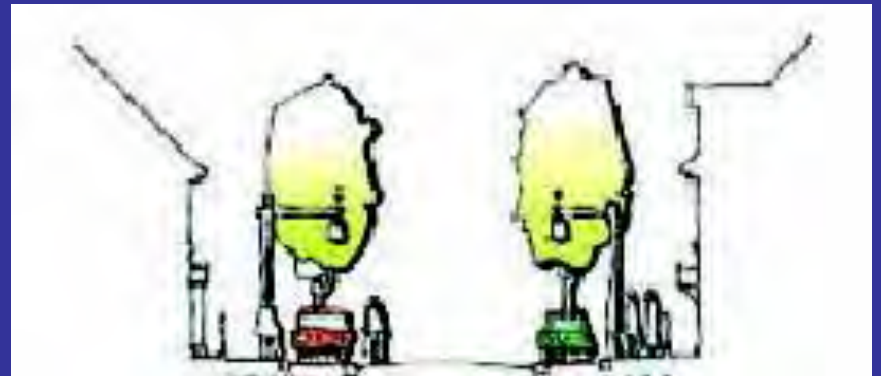
Developing a Movement Framework

- Where are the key desire lines?
- How can the development enhance the existing movement framework rather than disrupt or sever it?
- What points of connection and linkage can be achieved?
- Should these be for all modes?
- Can concerns over 'rat running' be addressed through slower speeds?



Street Character Types

- Consider
 - Key dimensions (widths etc)
 - Relationship to buildings and private realm
 - Parking
 - Materials
 - Planting etc
- Terminology important
 - Eg avenue, mews, lane, boulevard
 - Not Minor Access Road, Local Distributor Road



Mode hierarchy

- Consider modes in order:
 - Pedestrians
 - Cyclists
 - Public Transport
 - Motor vehicles
- Accommodate all users on streets
- Tight corner radii level crossings



Car Parking

Parking solutions should not dominate the scheme, and should be carefully considered to reduce the impact of parking spaces on the character and layout of the development.

The Taylor Review.



Car parking - key principles

- No single best solution to providing car parking.
- A combination of solutions will often be appropriate
- “Rediscover the street as a beautiful car park”
- On-street parking is efficient, understandable and can increase vitality and safety
- Rear courtyards need to support on-street parking, not replace it.

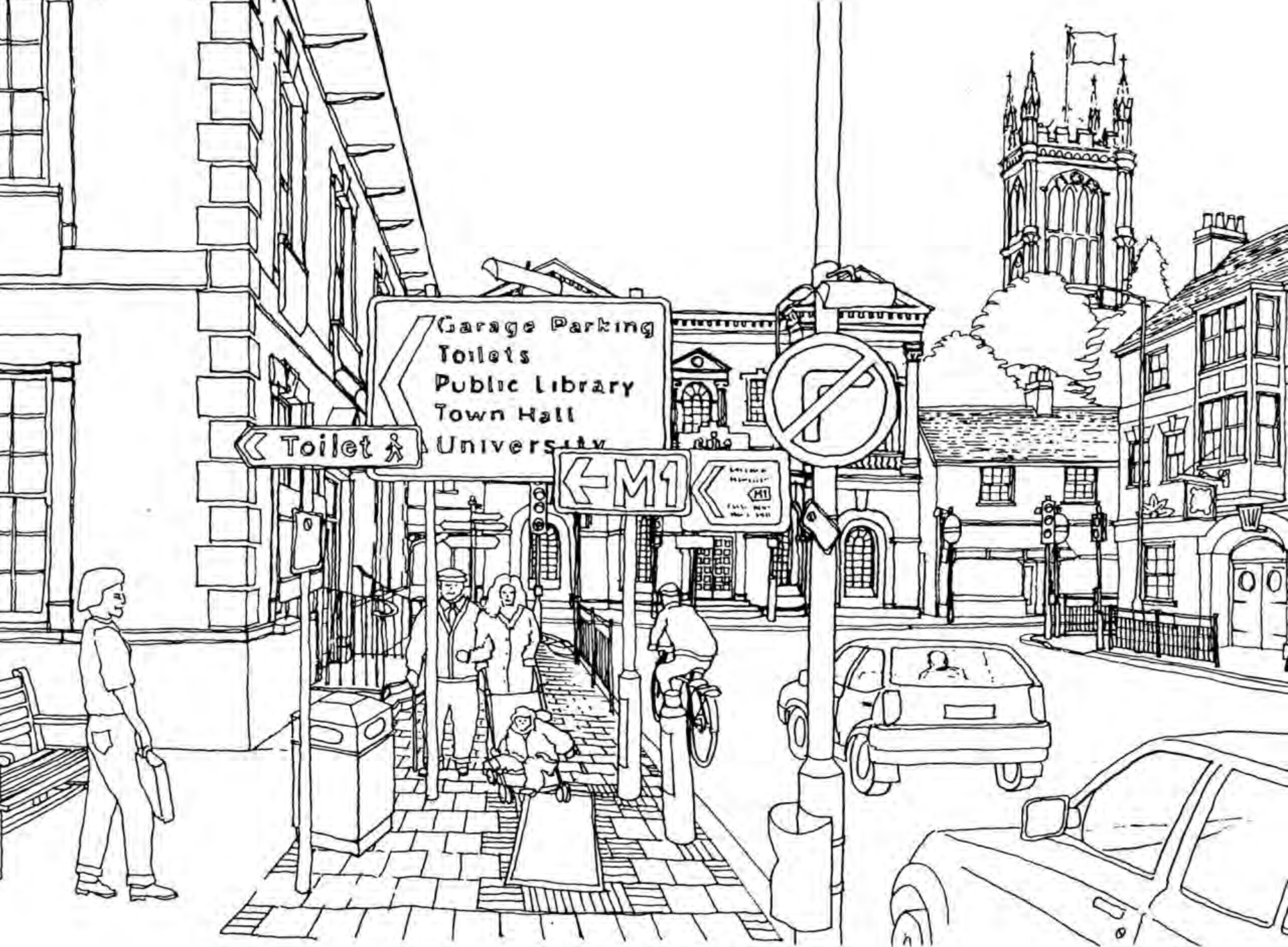




Sherborne



Victoria Gardens, Camelford



Garage Parking
Toilets
Public Library
Town Hall
University

Toilet

M1

M1
FALL BENT
MAY 1 1981

Man walking with a bag

Group of people walking

Cyclist riding a bicycle

Car driving on the road

Car driving on the road

Church spire

Buildings on the street





Straight(ish) streets vs bendy streets



Shepton Mallett



Shepton Mallett



Redruth



Victoria Gardens, Camelford



Highfields, Bakewell



Mortonhamstead Devon

Thank You
Justine Leach

justine@justineleach.co.uk

