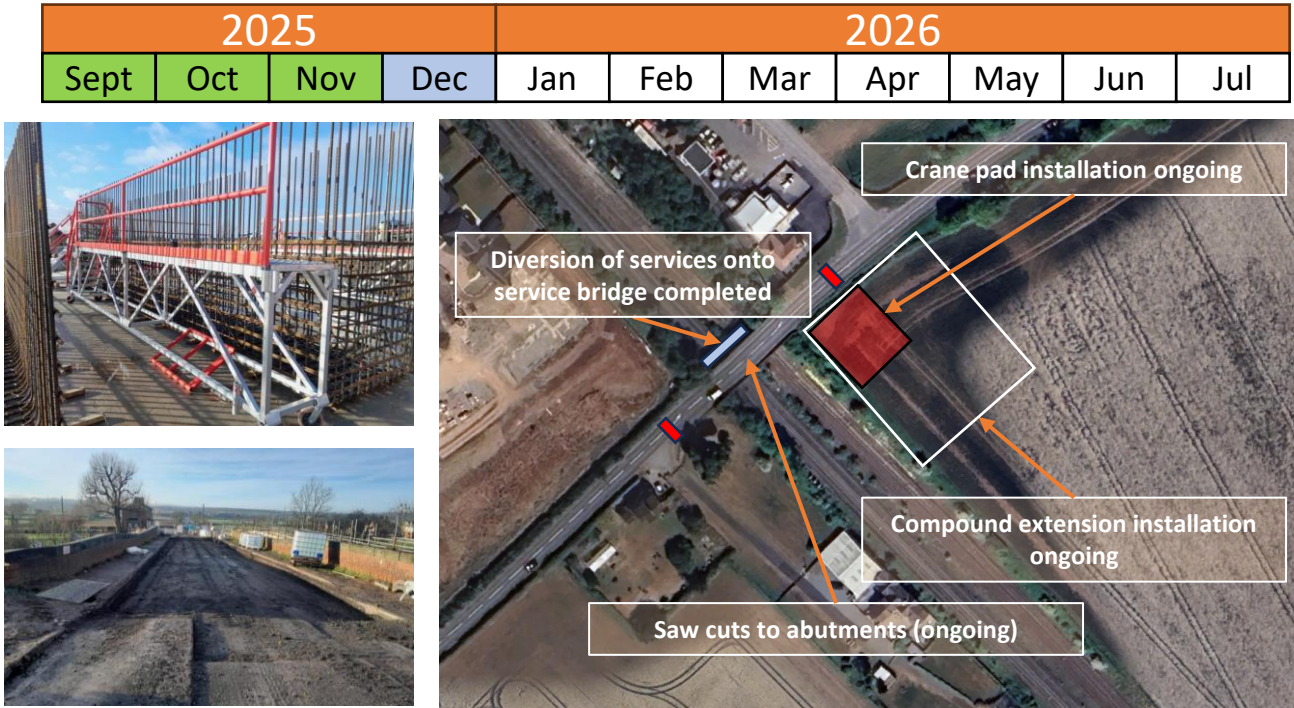


## Four Week Look Back:

Over the past month we have completed the following works, annotated on the image below.






Activity	Completion Date	Status
Service Identification Within Highway	November 2025	Complete 
Service Diversions (BT, Severn Trent, Cadent)	December 2025	Complete 
Saw Cuts to Abutments	Ongoing	In-progress
Compound Extension and Crane Pad Installation	Ongoing	In-progress

[Web Page Link](#)  
[Kirk Hill bridge project - Network Rail](#)

Get in touch with our 24-hour national helpline on 03457 11 41 41.

## Programme Updates Previous Month:

The progress against the planned activities from last month are as follows:

Activity	Completion Date	Status
Severn Trent – Transfer supply to temporary water pipe	November 2025	Complete 
Finish main compound set up	November 2025	Complete 
Construct access to track level	November 2025	Complete 
Cadent – Low pressure gas main to temporary pipe	November 2025	Complete 
Electricity – Changeover of HV & LV to temporary cable	November 2025	Complete 
BT – Install cables (& notice period for changeover)	November 2025	Complete 
Abutment saw cuts	December 2025	In-progress
Central Pier saw cuts	December 2025	In-progress

\*Information is dated 15/12/2025

[Web Page Link](#)  
[Kirk Hill bridge project - Network Rail](#)

Get in touch with our 24-hour national helpline on 03457 11 41 41.

## Programme Updates Next Month:

The planned activities over the next month are:

Activity	Completion Date	Status
Abutment saw cuts	December 2025	In-progress
Central Pier saw cuts	December 2025	In-progress
Building scaffolding on structure	December 2025	In-progress
Materials and plant deliveries for demolition	December 2025	In-progress
Christmas Demolition works	24-27 <sup>th</sup> December	Not Started
Remove demolition spoil and plant	January 2026	Not Started
Follow-up works (post-demolition)	January 2026	Not Started

[Web Page Link](#)  
[Kirk Hill bridge project - Network Rail](#)

Get in touch with our 24-hour national helpline on 03457 11 41 41.

## Site Works - Look Ahead:

Our key upcoming works are:

2025				2026						
Sept	Oct	Nov	Dec	Jan	Feb	Mar	Apr	May	Jun	Jul
	Key Activities			Completion Date			Status			
1	Traffic management installed. Site setup, including initial service diversions, service scaffold construction.			31/10/2025			Complete 			
2	Service diversions complete, site layout finalised, demolish existing bridge (piers & abutments retained).			25/12/2025			Planned (On-target)			
3	Reconstruction of bridge deck, parapet installation, deck reinforcement. Start of drainage and approach units.			22/03/2026			Planned (On-target)			
4	Installation of ducting, kerbing, road lining, tarmac surface. Completion of road safety audits. Services re-diverted.			June 2026			Planned (On-target)			
5	Completion of final road safety audit, removal of traffic management, final services re-installed.			July 2026			Planned (On-target)			



[Web Page Link](#)  
[Kirk Hill bridge project - Network Rail](#)

Get in touch with our 24-hour national helpline on 03457 11 41 41.

## Disruptive Works – Advanced Notice:

We will be undertaking the demolition of the existing bridge deck on 24-27th December 2025.

We will minimise disruption during this work as much as possible. There may be some noise during the demolition of the structure. We will be using excavators to safely take apart the existing structure and remove any demolition spoil from the railway to make sure trains can run following the Christmas shutdown period.

- 1. Mobilisation – Plant is moved into position to access the railway and the structure. Temporary track protection is installed.
- 2. Demolition Works – The removal of the existing bridge deck, removal of the track protection following muck out, and the installation of scaffolding.
- 3. Abutment works – Trimming of the retained abutments and pier and follow-up screed layering.
- 4. Precast installation – Installation of the precast units to build the abutments and pier back up to the new level, installation of rebar in advance of follow-on works.

Task	Level of Disruption	*Date & Time
Phase 1 – Mobilisation	Medium	24/12 22:00 to 25/12 06:00
Phase 2 – Demolition	High (Peak of Noise)	25/12 06:00 to 26/12 00:00
Phase 3 - Abutment Works	Medium	26/12 01:00 to 26/12 09:00
Phase 4 – Precast Installation	Low to Medium	26/12 09:00 to 27/12 01:00

\*Note the times in the table below are estimated and subject to movement based on the progress of the works within the disruptive period.

[Web Page Link](#)  
[Kirk Hill bridge project - Network Rail](#)

Get in touch with our 24-hour national helpline on 03457 11 41 41.



## Traffic Management:

Our traffic management arrangements are shown on the website linked at the bottom of this page.

We aim to minimise any disruption to residents while the works are taking place and would like to remind you that the businesses on Hathernware industrial estate remain open throughout the works.

Local area flood plan has been completed in anticipation of possible adverse weather impacting current traffic management arrangements. Traffic management was removed in response to the flood plan during the amber weather alert in the week of 10<sup>th</sup> November.

## Community Engagement:

We have undertaken the following community engagement over the past month:

- Regular sessions with local councillors have been set up to provide updates and assurances over the works every 4 weeks.
- Follow-up session for neighbours immediately adjacent to the bridge was held on 26/11, presentation slides available on the Kirk Hill project website.



[Web Page Link](#)

[Kirk Hill bridge project - Network Rail](#)

Get in touch with our 24-hour national helpline on 03457 11 41 41.